



## Cronk Steone, Rhencullen, Kirk Michael, Isle of Man. IM6 2HA

Semi Detached home with gardens to side and rear and a single garage and two parking spaces. Amazing views to front and rear.



£299,950 Freehold

## PROPERTY DESCRIPTION

---

This period semi-detached cottage exudes warmth and character throughout, perfect for those seeking comfort and tranquility. The cosy sitting room invites relaxation with its inviting ambience, complemented by traditional features and a fireplace that beckons for quiet evenings. The modern kitchen seamlessly blends contemporary convenience with rustic charm, equipped to handle both everyday cooking and entertaining. A sunroom to side bathed in natural light enhances the living space, offering stunning views of the garden and the distant rural fields and hills, making it an ideal spot for morning coffee or afternoon reading. The cottage boasts two spacious double bedrooms, providing restful retreats, along with a versatile occasional bedroom that serves as a perfect study for remote work or guests. A separate shower room adds practicality to this lovely home.

Stepping outside, the cottage reveals a true outdoor oasis, highlighted by a wonderful garden brimming with fruit trees and a variety of vegetables, perfect for gardening enthusiasts or anyone wishing to enjoy homegrown produce. The detached single garage offers ample storage, while two designated parking spaces ensure convenience for residents and guests alike. With scenic distant views stretching towards the coast and the rolling hills and fields at the rear, the location is ideal for landscape lovers. Just moments away, you'll find delightful walking trails leading to the beach, inviting endless exploration and outdoor enjoyment.

**DISCLAIMER** Whilst Manxmove Ltd believe that these details are correct, neither Manxmove Ltd or their clients guarantee their accuracy in any way. Consequently, these details are not to be used to form part of any legally binding contract. Prospective purchasers or tenants are advised to visit this property to satisfy themselves as to the correctness of these details. Please note, we use wide angle camera lenses in order to show as much of each room as possible. This is not intended to mislead any prospective purchasers or tenants in any way and an honest verbal description is always available prior to viewing if required.

**INCLUSIONS** Floor coverings, light fittings, blinds.

## FEATURES

---

- No Onward Chain
- Off road parking plus Garage
- Semi-Detached Home with views
- Attractive Lounge with Wood Burner
- Modern Kitchen
- Sunroom
- Two Double Bedrooms
- Bathroom with Shower and Views
- Study / Occasional Bedroom
- Delightful Garden inc Veg and fruit



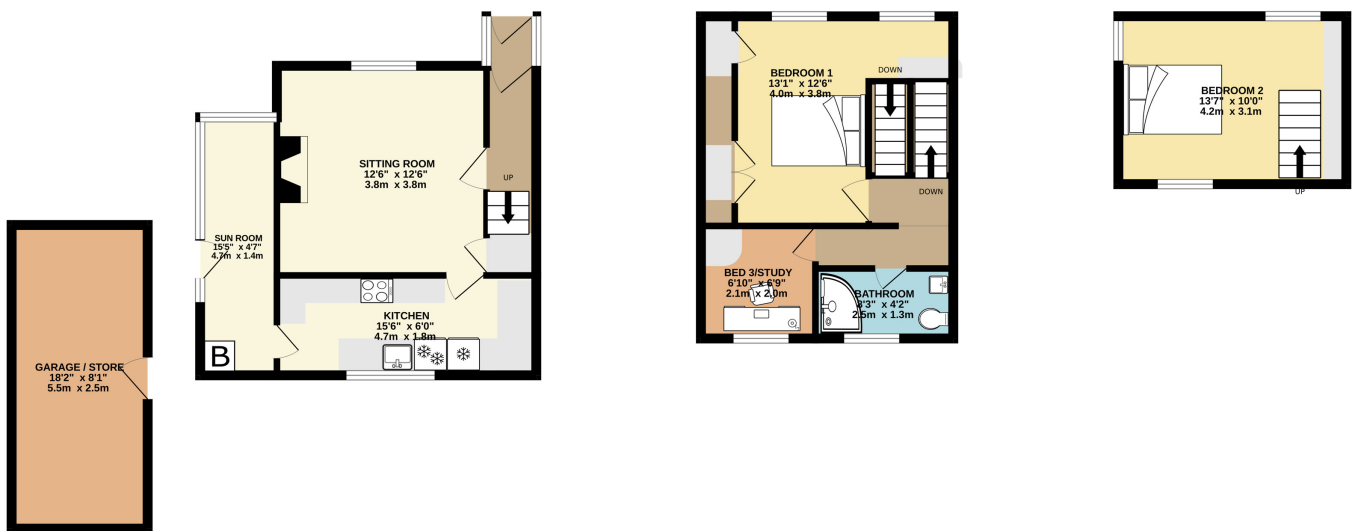


# Property Images

---



# FLOORPLAN



SEMI-DETACHED HOUSE

TOTAL FLOOR AREA : 933 sq.ft. (86.7 sq.m.) approx.

Whilst every attempt has been made to ensure the accuracy of the floorplan contained here, measurements of doors, windows, rooms and any other items are approximate and no responsibility is taken for any error, omission or mis-statement. This plan is for illustrative purposes only and should be used as such by any prospective purchaser. The services, systems and appliances shown have not been tested and no guarantee as to their operability or efficiency can be given.  
Made with Metropix ©2024



**DISCLAIMER:** Whilst Manxmove Ltd believe that these details are correct, neither Manxmove Ltd or their clients guarantee their accuracy in any way. Consequently, these details are not to be used to form part of any legally binding contract. Prospective purchasers or tenants are advised to visit this property to satisfy themselves as to the correctness of these details. Please note, we use wide angle camera lenses in order to show as much of each room as possible. This is not intended to mislead any prospective purchasers or tenants in any way and an honest verbal description is always available prior to viewing if required.

Manxmove Estate Agents - Douglas  
Victoria Road, Douglas, IM2 4HD  
01624 619966  
info@manxmove.im