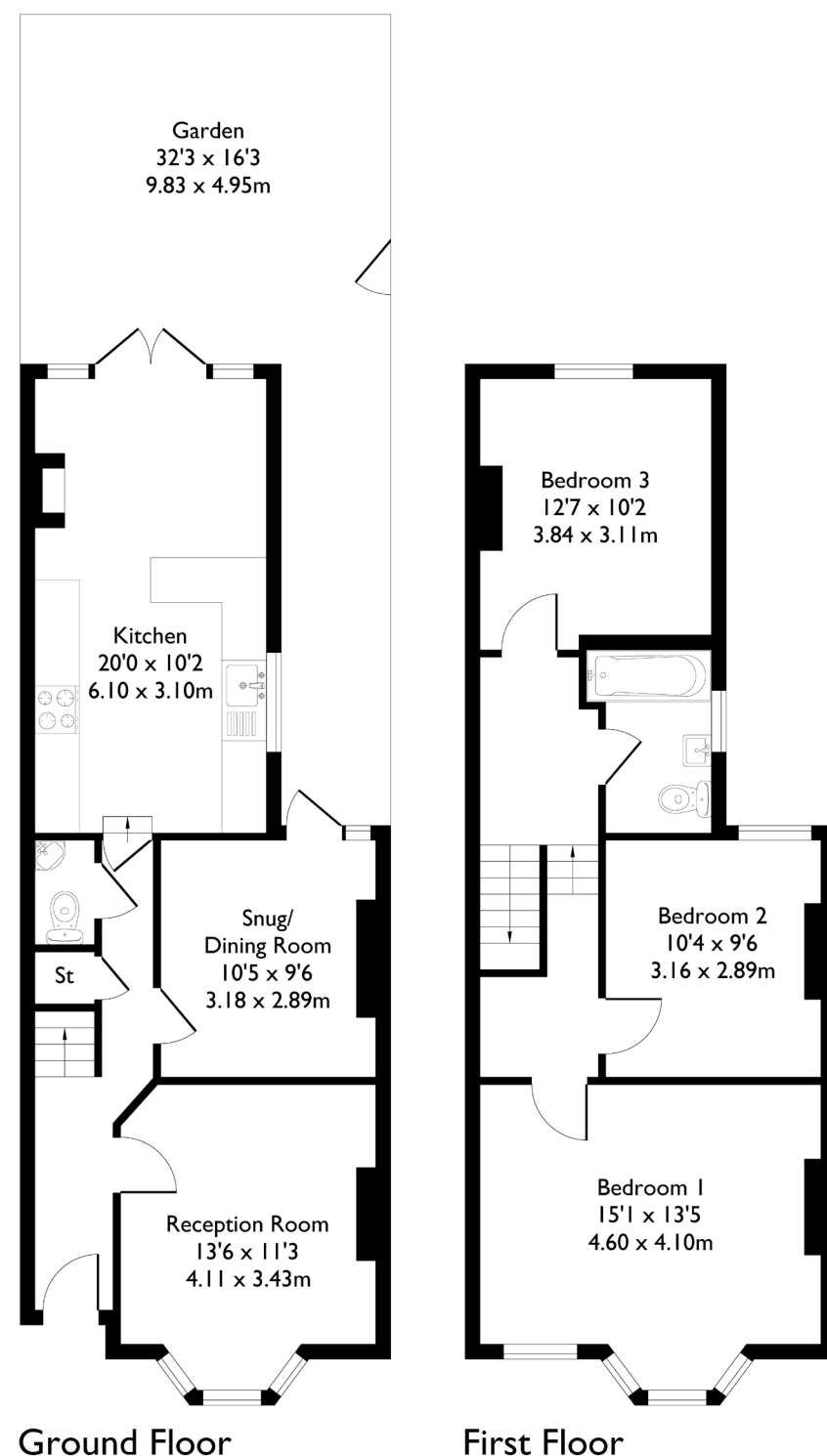


Adelaide Road, London, W13

Approximate Floor Area = 101.7 sq m / 1096 sq ft



3 BEDROOM HOUSE

Adelaide Road, W13

Price £975,000

Welcome to this fantastic bay-fronted Edwardian home, offering three generous double bedrooms, a family bathroom, and a convenient downstairs WC.

The property retains many beautiful period features, adding character and warmth throughout. Ideally located close to popular local schools and within a 10-minute walk to the Elizabeth Line. This home is also well positioned for the shops, bars, and cafés of Northfield Avenue, with Northfields Piccadilly Line station just moments away.

FEATURES

End of Terrace with potential to extend (STPP)

Three Bedrooms

One Bathroom/ Downstairs W/C

Open Plan Kitchen/Living

Northfields Station (Piccadilly Line) & West Ealing Station (Elizabeth Line)

Oaklands Primary & Elthorne High School catchments

EPC Rating F



3 BEDROOM HOUSE

Adelaide Road, W13

The property benefits from high ceilings and a wealth of original features throughout.

There are two separate reception rooms, one of which could be used as a formal dining space if desired, in addition to an open-plan kitchen/living area with attractive views over the beautifully landscaped garden—ideal for both everyday living and entertaining.

Upstairs, the first floor comprises three well-proportioned double bedrooms and a family bathroom.

It is well presented with excellent loft and side expansion potential, subject to the usual planning permissions.

EPC Rating F

