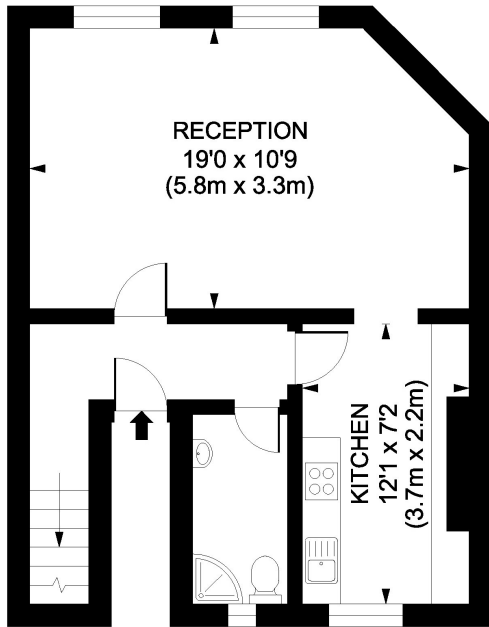




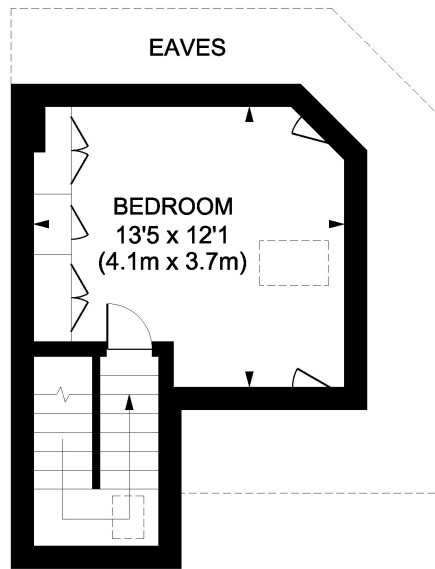
Northcote Road
Between The Commons
SW11

TO LET

This smart, one bedroom flat is located over the top two floors of this corner, period property. With a large reception room to the front and a well-fitted kitchen plus bathroom on the first floor and the bedroom on the upper floor, it has a light and spacious feel. There is also a very useful, large under-stairs storage cupboard. It is well located, close to the bars, restaurants and shopping facilities of Northcote Road and close to both Wandsworth and Clapham Commons. Transport is nearby at Clapham Junction and at Clapham South.



SECOND FLOOR



THIRD FLOOR

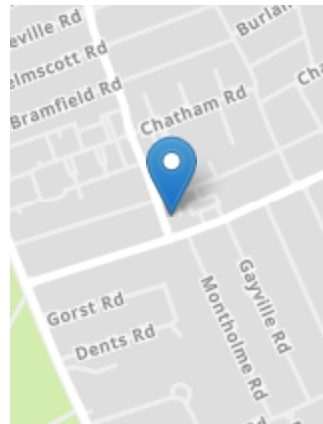
Northcote Road, SW11
Gross internal area 624 sq ft/58 sq metres

©photosandfloorplans.com



PROPERTY FEATURES

- Kitchen
- Storage
- Residents Parking
- Available Immediately
- London Borough of Wandsworth
- Large Under-Stairs Storage Cupboard
- Bathroom
- Double Bedroom
- Large Reception Room
- 624 Sq Ft / 58 Sq M



Energy Efficiency Rating		
Very energy efficient - lower running costs		
182-189	A	
161-181	B	
139-160	C	
129-138	D	
108-128	E	
81-107	F	
55-80	G	
Not energy efficient - higher running costs		
England, Scotland & Wales		
EU Directive 2010/31/EU		

VIEWING BY APPOINTMENT ONLY

The particulars do not constitute part of an offer or contract: the particulars including text descriptions, photographs and plans are only for the guidance of prospective purchasers and must not be relied on as statements of fact: nothing in the particulars shall be deemed as a statement that the property is in good condition nor that any services or facilities are in good working order: measurements given are approximate: prior to viewing we recommend that you discuss particular points of interest with a staff member to avoid a wasted journey