



diamond  
PROPERTIES



**142 Hyde Park Road, Leeds, West Yorkshire. LS6 1AJ.**

**£1,368.75 Freehold**

- Perfect Location
- 3 Bedrooms over 3 floors
- 1 Bathroom
- 105PPPW
- Available 01.07.2022

0113 278 3333

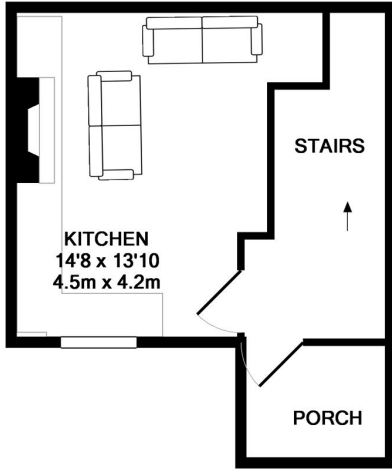
<https://www.diamondproperties.co.uk>

[hydepark@diamondproperties.co.uk](mailto:hydepark@diamondproperties.co.uk)

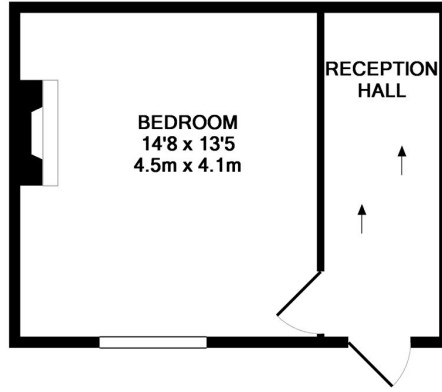
# 142 Hyde Park Road, Leeds, West Yorkshire. LS6 1AJ.

**£1,368.75 Freehold**

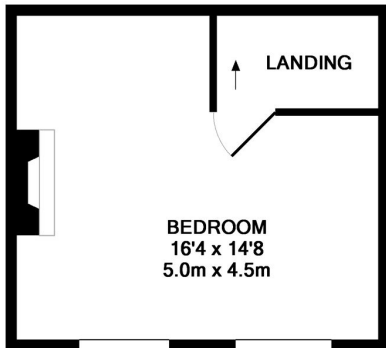
Diamond Properties are pleased to offer, this top notch, recently refurbished, beautiful three bedroom student house, split over 4 floors and having a bedroom on each floor! Plus an open plan living room-kitchen area, house bathroom and being located just minutes' walk from the main university campus and all local amenities, an early viewing is recommended on this property!



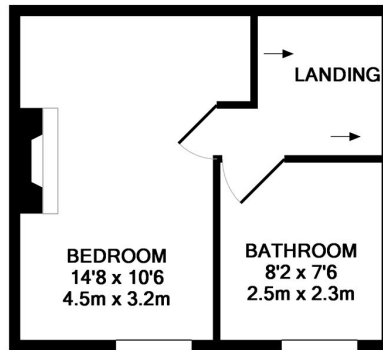
GROUND FLOOR  
APPROX. FLOOR  
AREA 279 SQ.FT.  
(25.9 SQ.M.)



ENTRANCE FLOOR  
APPROX. FLOOR  
AREA 277 SQ.FT.  
(25.7 SQ.M.)



2ND FLOOR  
APPROX. FLOOR  
AREA 240 SQ.FT.  
(22.3 SQ.M.)



1ST FLOOR  
APPROX. FLOOR  
AREA 240 SQ.FT.  
(22.3 SQ.M.)

TOTAL APPROX. FLOOR AREA 1035 SQ.FT. (96.1 SQ.M.)

Whilst every attempt has been made to ensure the accuracy of the floor plan contained here, measurements of doors, windows, rooms and any other items are approximate and no responsibility is taken for any error, omission, or mis-statement. This plan is for illustrative purposes only and should be used as such by any prospective purchaser. The services, systems and appliances shown have not been tested and no guarantee as to their operability or efficiency can be given  
Made with Metropix ©2019

