



13/6, Wheatfield Street, Gorgie, Edinburgh, EH11 2PB

Light and Well-Presented, Traditional, One-Bedroom, Second-Floor Flat

Up to date price and viewing info at mov8realestate.com/property

ēspc **rightmove** **Zoopla**
find your happy

Property Description

Light and well-presented, one-bedroom, second-floor flat, forming part of a traditional stone-built tenement. Set on a quiet side street, conveniently located in the popular Gorgie area, west of Edinburgh city centre.

Comprises an entrance hall, living/dining room, kitchen, utility room, a double bedroom and a shower room.

Freshly prepared for the market, features include a fitted kitchen with appliances, a modern bathroom, double glazing and gas central heating. In addition, there is a secure entry system, a shared garden to the rear, and zoned on-street parking to the front.

The sale includes furniture, should the buyer wish to retain it.

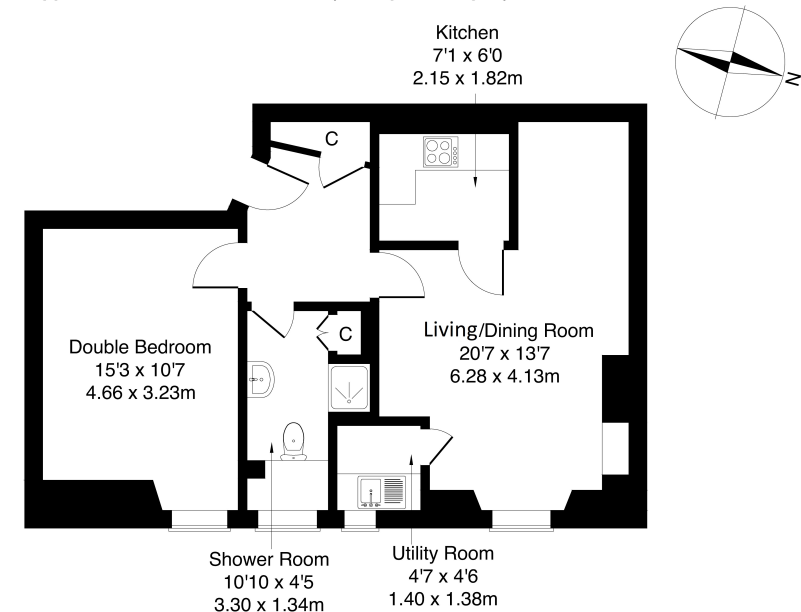
A spacious entrance hall, with storage, is finished with carpeting and the light, neutral decor which continues throughout the flat. A well-proportioned reception room offers a versatile floor plan, with ample space for both comfortable lounge furniture as well as a dining table and chairs. Leading off the living and dining room, a kitchen is fitted with modern, white units, and stone-effect worktops, whilst appliances include a freestanding cooker, a microwave and a fridge/freezer. Also conveniently accessed from the reception room, a utility room houses additional cupboard storage, a sink and a washing machine.

The flat's double bedroom is bright and spacious and provides plenty of space for freestanding bedroom furniture and storage. Completing the accommodation, a shower room comprises a recessed shower cubicle, a two-piece suite, fitted cupboard storage, panel splash walls and tiled flooring.



13/6 Wheatfield Street, Edinburgh, EH11 2PB

Approximate Gross Internal Area: (570 sq ft - 53 sq m.)



Second Floor

Legal Disclaimer : Floor-plan and measurements are for illustrative guidance only, and not intended to form part of any contract.

Area Description

Gorgie is a popular and historic district of Edinburgh, just west of the city centre, comprising mostly of traditional stone-built tenements. Gorgie Road has a vibrant atmosphere, and provides extensive local amenities along its length, with a Sainsbury's and ALDi in Gorgie, and a 24-hour ASDA at Chesser providing superstore shopping. Home to Heart of Midlothian Football Club, there are a

number of leisure opportunities including Gorgie Farm, Dalry swimming pool, Craiglockhart Sports Centre, and Fountain Park with a multi-screen cinema, fitness centre and numerous restaurants. Frequent bus services are available from Gorgie Road, whilst Haymarket Station, Napier and Heriot-Watt universities and Edinburgh College are also within easy reach.





Our Services

-  Free pre-sale property valuations
-  Great value fixed estate agency fees
-  Extensive buyer matching database
-  Purchase and sale conveyancing

Contact Us

0345 646 0208

sales@mov8realestate.com

www.mov8.com

Head Office

6 Redheughs Rigg, Edinburgh, EH12 9DQ

Glasgow Office

77 Renfrew Street, Glasgow, G2 3BZ



Estate Agents and Solicitors



These particulars do not form part of any contract and the statements or plans contained herein are not warranted nor are they to scale. All descriptions, dimensions, areas, reference to condition and necessary permissions for use and occupation and other details are given in good faith, and are believed to be correct, but any prospective purchaser should not rely on them as statements or representations of fact, and any prospective purchaser must satisfy themselves by inspection or otherwise as to the correctness of each of them. The Seller shall not be bound to accept the highest or any offer nor to accept a full offer of the Fixed Price where this is applicable. Approximate measurements have been taken by sonic device and measurements are most often taken to the widest point of any room or space. Services and appliances have not been tested for efficiency or safety and no warranty is given as to their compliance with any Regulations. Offers should be made using the Combined Standard Clauses.