



**GREGORY BROWN**  
RESIDENTIAL SALES & LETTINGS

£190,000 Share of Freehold  
**FOR SALE**



## **Winslade House, Egham Hill, Egham, Surrey, TW20 0AY**

SHARE OF FREEHOLD | WELL PRESENTED & SPACIOUS ONE BEDROOM APARTMENT SITUATED IN THIS CHARMING CHARACTERFUL BUILDING IDEALLY LOCATED WITHIN MOMENTS OF EGHAM TOWN CENTRE & MAINLINE TRAIN STATION AND FOR EASY ACCESS TO LOCAL MOTORWAY NETWORKS & HEATHROW AIRPORT. The split-level property benefits from a spacious lounge open to modern fitted kitchen, large double bedroom, modern white bathroom suite and allocated parking. No Onward Chain. Viewings Highly Recommended!

**Gregory Brown**

127a, High Street, Staines-upon-Thames, TW18 4PD

01784 451458

[staines@gregory-brown.co.uk](mailto:staines@gregory-brown.co.uk)

ROOM DESCRIPTIONS

\_\_\_\_\_

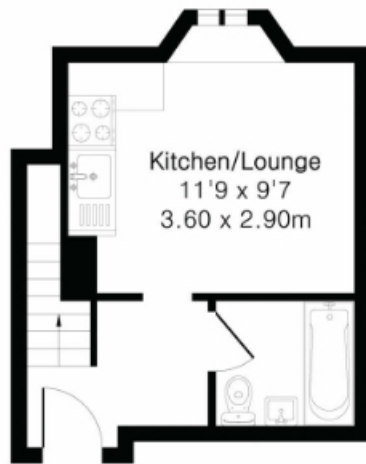
## FLOORPLAN

---

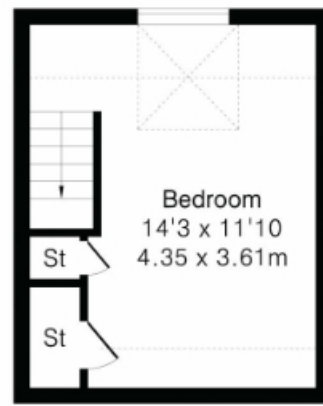
**Approximate Gross Internal Area 382 sq ft - 35 sq m**

Second Floor Area 205 sq ft – 19 sq m

Third Floor Area 177 sq ft – 16 sq m



Second Floor



Third Floor