



Jason Court  
Cypress Road  
London  
SE25

Offers In Excess Of £235,000

bettermove



# Cypress Road London

Bettermove are proud to present this 1 bedroom flat in London, available with no forward chain.

This property is currently tenanted and will be sold with tenants in situ for immediate investment. Rental yields can be obtained through Bettermove.

This property benefits from double glazing, and gas central heating throughout, with one parking space available.

The council tax band is B.

This is a leasehold property with 62 years remaining on the lease.

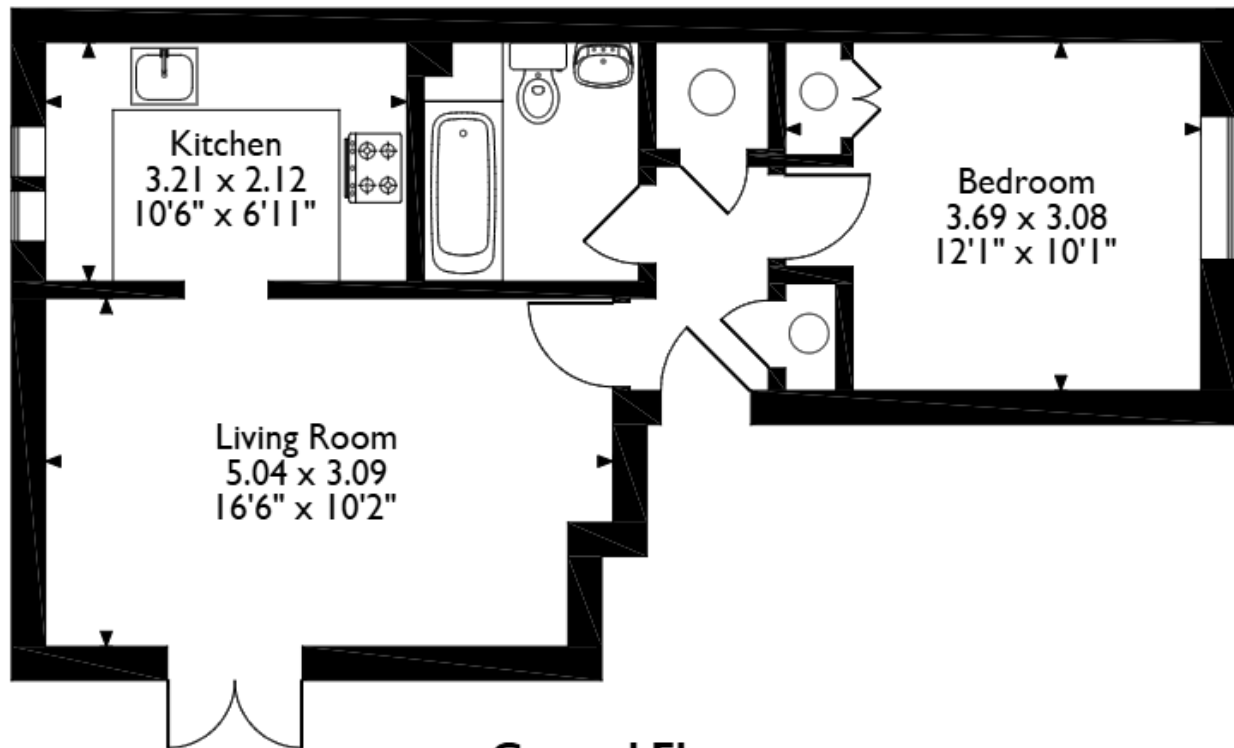
The interior of this beautifully presented, ground floor property comprises a spacious living room, fitted kitchen, family bathroom and one double bedroom.

Located in Anerley, in the popular city of London, the property is close to a range of amenities, including shops, supermarkets, restaurants and pubs. Excellent transport links can be found from Anerley Railway Station, a variety of local bus and underground routes, and quick access to the A23.

This exciting opportunity should not be missed! All enquiries can be made through Bettermove on 0330 004 0050.



Jason Court, Cypress Road, London  
Approximate Gross Internal Area  
43 Sq M/463 Sq Ft



**Ground Floor**

Please note that the location of doors, windows and other items are approximate and this floorplan is to be used for illustrative purposes only. Unauthorized reproduction is prohibited.





20-22 Bridge End, Leeds, LS1 4DJ  
t: 0330 004 0050 e: [hello@bettermove.co.uk](mailto:hello@bettermove.co.uk)  
[www.bettermove.co.uk](http://www.bettermove.co.uk)