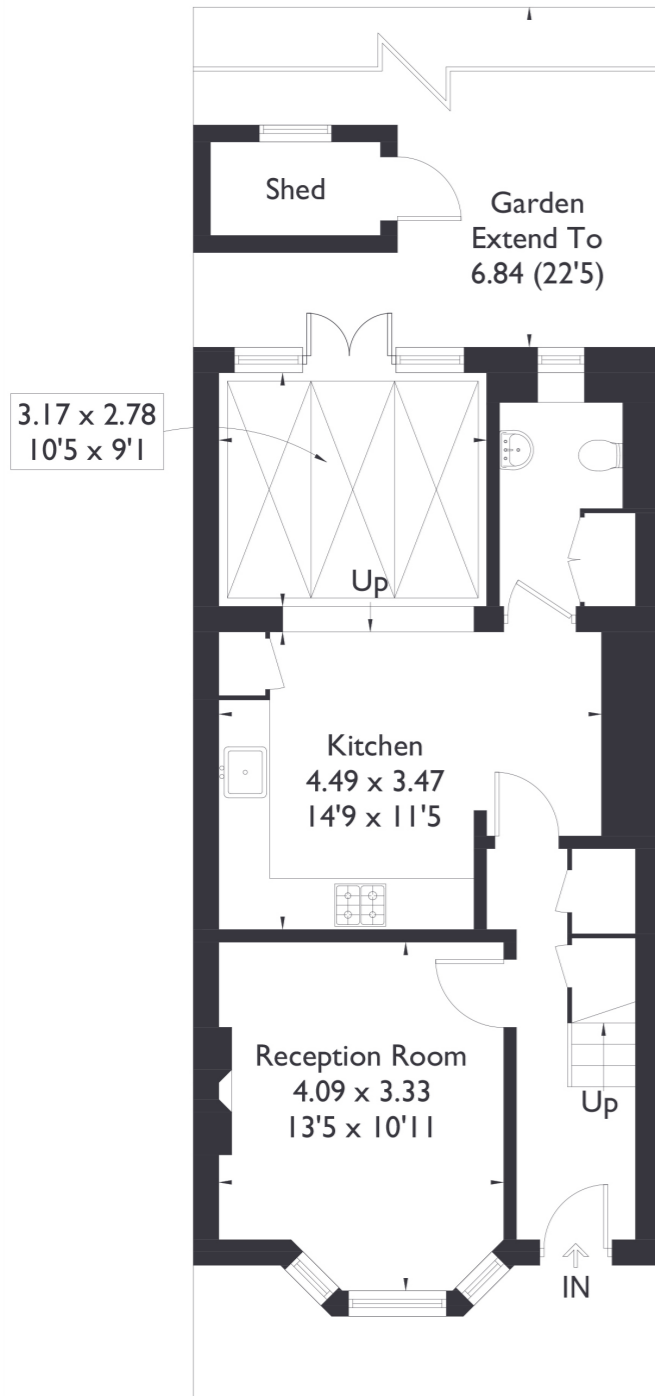
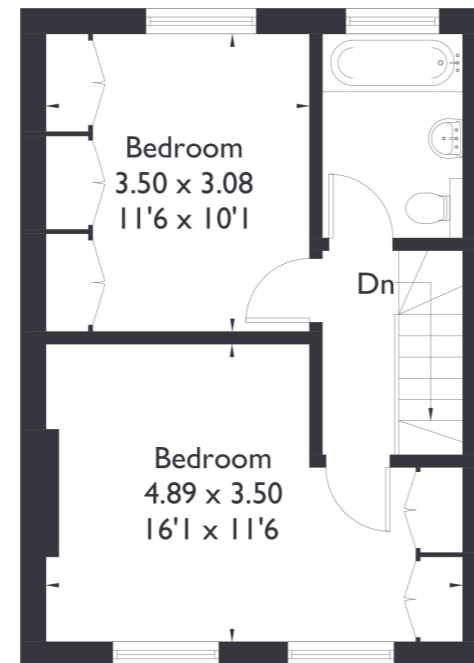


**Salisbury Road W13**

Approximate Floor Area = 85.2 sq m / 917 sq ft  
(Excluding Shed)



**Ground Floor**



**First Floor**



**2 BEDROOM HOUSE**

**Salisbury Road, W13**

**£800,000**

Welcome to this charming Edwardian home, offering two bedrooms and a spacious family bathroom, along with the convenience of a downstairs W/C. The ground floor features a lovely separate reception room, flowing into an open plan kitchen, dining, and living space ideal for both relaxing and entertaining.

Lovingly looked after by the current owners, this property is a perfect family home.

**FEATURES**

- Two Bedrooms
- One Bathroom/Downstairs W/C
- Open Plan Kitchen/ Dining
- Northfields Station/ West Ealing Station (Elizabeth II line)
- Fielding Primary School/ Elthorne Park High School
- Potential To Extend (STPP)
- EPC Rating D



2 BEDROOM HOUSE

## Salisbury Road, W13

The beautifully landscaped garden adds to the property's appeal, while also providing plenty of potential for future expansion.

Located just moments from Northfields' vibrant amenities and only a 10 minute walk to Northfields Station, this property is perfectly positioned. Additionally, it falls within the catchment area of the highly sought-after Fielding Primary School. EPC Rating D.

