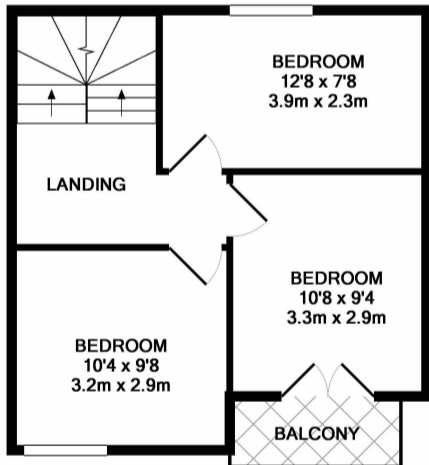


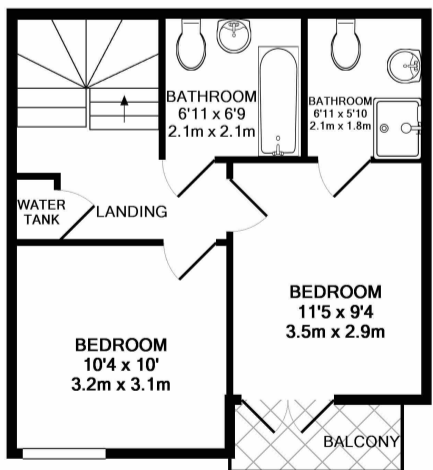
GROUND FLOOR
APPROX. FLOOR
AREA 362 SQ.FT.
(33.7 SQ.M.)



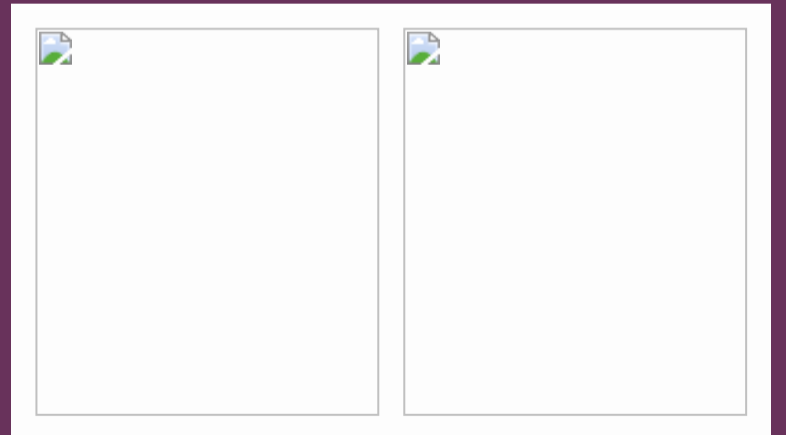
1ST FLOOR
APPROX. FLOOR
AREA 389 SQ.FT.
(36.1 SQ.M.)

TOTAL APPROX. FLOOR AREA 1140 SQ.FT. (105.9 SQ.M.)

Whilst every attempt has been made to ensure the accuracy of the floor plan contained here, measurements of doors, windows, rooms and any other items are approximate and no responsibility is taken for any error, omission, or mis-statement. This plan is for illustrative purposes only and should be used as such by any prospective purchaser. The services, systems and appliances shown have not been tested and no guarantee as to their operability or efficiency can be given
Made with Metropix ©2018



2ND FLOOR
APPROX. FLOOR
AREA 389 SQ.FT.
(36.1 SQ.M.)



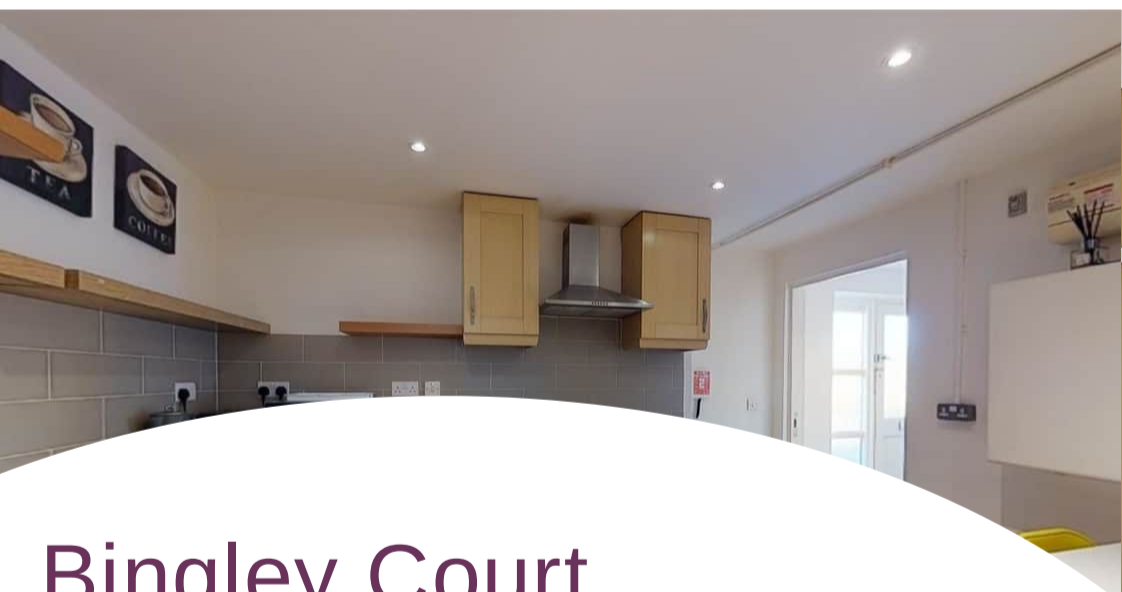


The house is in a modern development close to Canterbury centre and arranged over three floors - all good sized bedrooms some with balconies and allocated off street parking spaces. Five double bedrooms and three bathrooms (one en-suite). Two allocated parking spaces. Private balconies. Modern open plan kitchen/ reception with large fridge/ freezer, washing machine and dishwasher. Large house over three floors. The best student house in town! Bills package available for £25 pppw inc gas, electricity, water, waste water, tv licence. canterbury@absoluteliving.co.uk 020 3002 9001 - book a slot or video viewing!



- AVAILABLE 1 JUL 23
- TWO ALLOCATED PARKING SPACES
- FULLY FURNISHED
- THREE BATHROOMS
- VIRTUAL TOUR AVAILABLE HERE =>

- FIVE DOUBLE BEDROOMS (ONE EN-SUITE)
- NO ADMIN FEES
- TWO BALCONIES
- NEW DEVELOPMENT
- £430 PER PERSON PER MONTH OR £99 PER WEEK



Bingley Court

Canterbury City, Canterbury City Centre, CT1 2SW

Bingley Court CT1. Brilliant student house with 5 equal sized bedrooms, three bathrooms, balconies and off street parking. In new development opposite Aldi moments from Canterbury East Station and Unibus to UKC and a short walk to the centre of Canterbury. Includes fast broadband and incoming phone line. Bills package available for £25 pppw inc gas, electricity, water, waste water, tv licence. Other groups of students in the area.

