

Huntingdon Office: 01480 414800  
 www.peterlane.co.uk Web office open all day every day

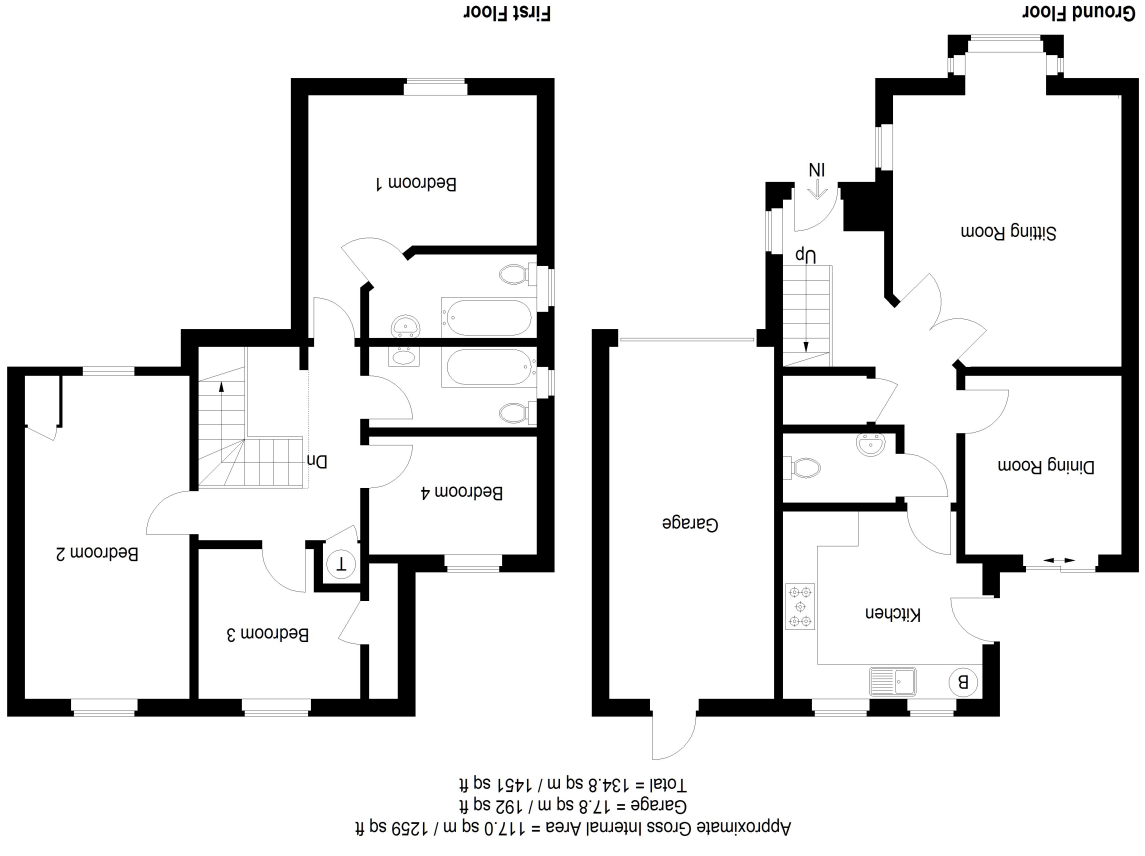
Huntingdon  
 60 High Street  
 St Neots  
 32 Market Square  
 Kimbolton

Huntingdon  
 15 Tayer St, London  
 Cashel House  
 Mayfair Office

Tel: 01480 414800  
 Tel: 01480 406400  
 Tel: 01480 860400  
 Tel: 0870 1127099



This plan is for layout guidance only. Not drawn to scale unless stated. Windows and door openings are approximate. Whilst every care is taken in the preparation of this plan, please check all dimensions, shapes and compass bearings before making any decisions reliant upon them. (ID1127306)  
 Housepix Ltd



- Countryside Homes Built Family Home
- Two Reception Rooms
- Desirable Birds Estate Location

- Four Bedrooms With En Suite To Principal Bedroom
- Garaging And Mature Gardens
- No Forward Chain And Immediate Vacant Possession



**Stained Glass Composite Door To**

**Entrance Hall**

Dado rail, coats hanging area, stairs to first floor, UPVC window to front aspect, single panel radiator, understairs storage cupboard, internal double doors to

**Cloakroom**

Fitted in a two piece white suite comprising low level WC, wall mounted wash hand basin with mono bloc mixer tap and tiling, single panel radiator, extractor, vinyl floor covering.



**Sitting Room**

18' 0" x 12' 10" (5.49m x 3.91m)

UPVC bay window to front aspect, double panel radiator, single panel radiator, TV point, telephone point, central fireplace with moulded timber surround, tiled hearth and inset Living Flame coal effect gas fire, UPVC window to front aspect.

**Dining Room**

10' 6" x 8' 10" (3.20m x 2.69m)

Sliding double glazed patio doors to rear aspect, single panel radiator, coving to ceiling.



**Kitchen**

11' 3" x 10' 8" (3.43m x 3.25m)

A double aspect room with UPVC door and window to rear aspect, appliance spaces, fitted in a range of base and wall mounted cabinets with complementing work surfaces and tiling, glass fronted display cabinets, wall mounted gas fired central heating boiler serving hot water system and radiators, double panel radiator, drawer units, vinyl flooring.

**First Floor Galleried Landing**

Recessed lighting, access to loft space, dado rail, single panel radiator, airing cupboard housing hot water cylinder, shelving and hanging space.



**Bedroom 1**

14' 0" x 12' 10" (4.27m x 3.91m)

UPVC window to front aspect, single panel radiator, inner access to

**En Suite Bathroom**

8' 5" x 5' 8" (2.57m x 1.73m)

UPVC window to side aspect, fitted in a three piece range of white sanitaryware comprising low level WC, panel bath with folding shower screen with independent shower unit fitted over and mixer tap, pedestal wash hand basin with mixer tap, extensive ceramic tiling, radiator, vinyl floor covering.

**Bedroom 2**

18' 6" x 9' 6" (5.64m x 2.90m)

A double aspect room with UPVC window to front aspect and Velux window to rear aspect, single panel radiator, wardrobe with hanging and storage.

**Bedroom 3**

10' 9" x 9' 6" (3.28m x 2.90m)

Velux window to garden aspect, single panel radiator, wardrobe with hanging and shelving.

**Bedroom 4**

9' 2" x 6' 7" (2.79m x 2.01m)

UPVC window to garden aspect, single panel radiator.

**Family Bathroom**

8' 6" x 5' 3" (2.59m x 1.60m)

Fitted in a three piece suite comprising low level WC, panel bath, pedestal wash hand basin with mixer tap, extensive tiling, shaver point, UPVC window to side aspect, radiator.

**Outside**

There is a gravel driveway giving provision for two large vehicles accessing the integral **Single Garage** with electrically operated up and over door, power and lighting. The front gardens are lawned and enclosed by mature Laurel hedging. To the rear the gardens are pleasantly arranged with a circular paved seating area, established borders, a selection of ornamental trees and shrubs, outside tap and lighting with gated access extending to the front.

**Tenure**

Freehold

Council Tax Band - E

