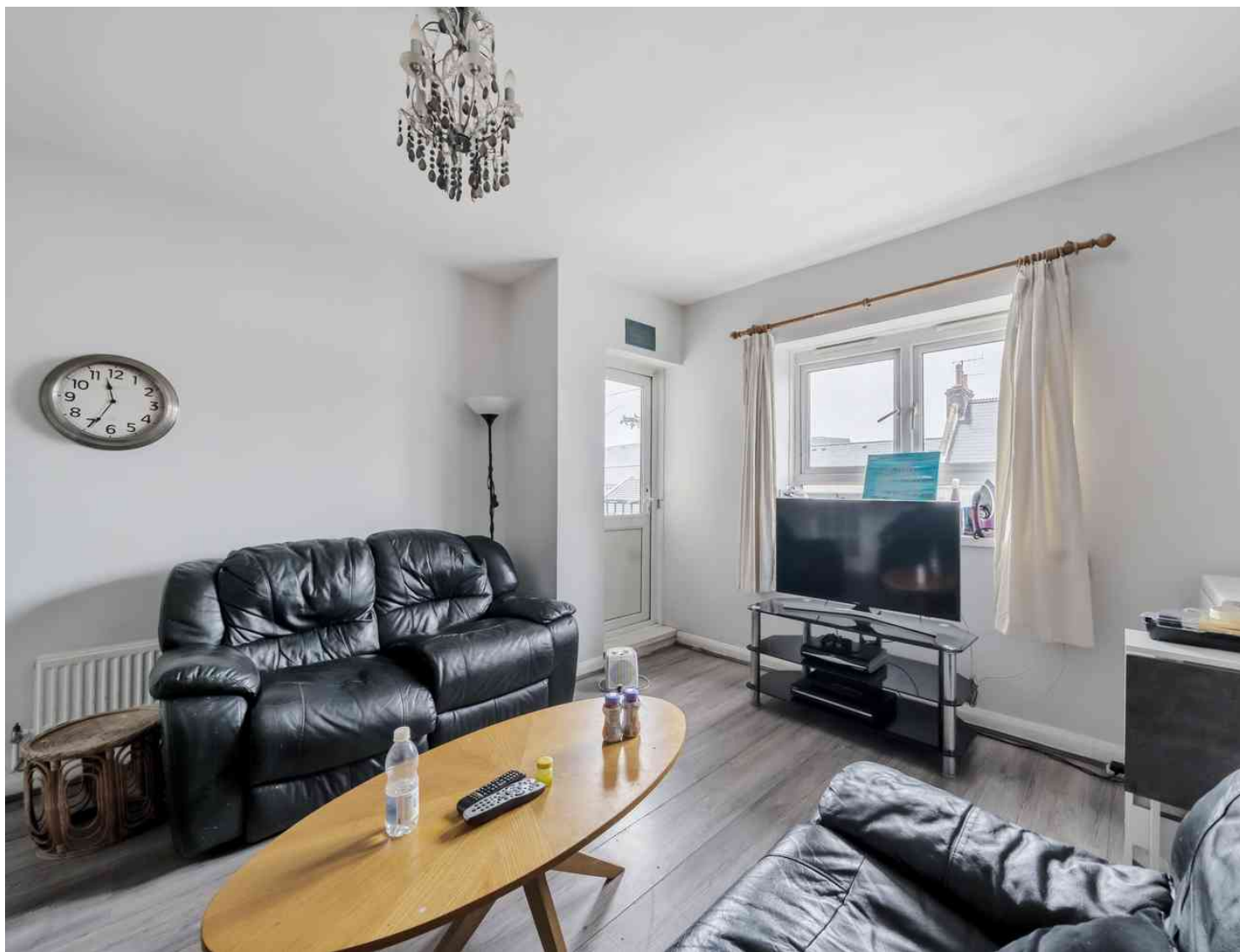




Tarling Street, London, E1 0BA

Cow & Co
LONDON



This Three double bedroom, second floor, ex local authority flat is in generally good condition but would benefit from some cosmetic updating.

The flat provides approximately 842A three double bedroom second floor ex local authority flat which is situated in Robert Sutton House, Tarling Street, E1.

The property is in generally good condition but could do with some cosmetic improvement.

Located close to a lot of local amenities in Shadwell and Commercial Road.

The nearest stations are Shadwell (DLR) and Shadwell (Overground) which is one stop to Whitechapel for the (District and Hammersmith & City Lines) and the (Elizabeth Line).

The property represents great value as a first time buy or buy to let investment and offers approximately 842 sq/ft of space as well as a balcony/terrace accessed from the living room.

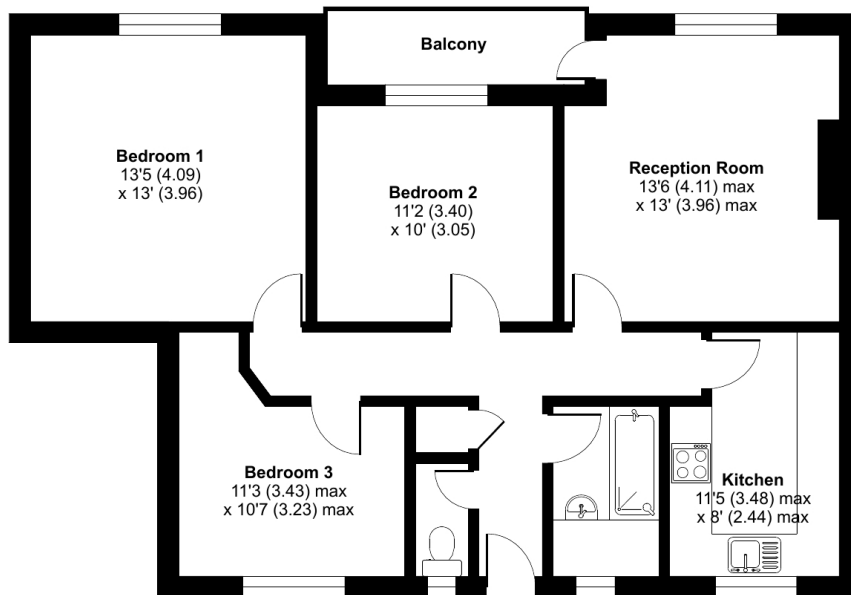


- Three double bedrooms
- Reception room
- Bathroom and separate W.C.
- Fitted kitchen
- Second floor
- Lift in Block
- Security entry phone system
- Close to local amenities in Shadwell

Tarling Street, London, E1

Approximate Area = 842 sq ft / 78.2 sq m

For identification only - Not to scale



SECOND FLOOR



Floor plan produced in accordance with RICS Property Measurement Standards incorporating International Property Measurement Standards (IPMS2 Residential). © nchecon 2023. Produced for Cow & Co Properties Ltd. REF: 1065049

Tel: 0208 065 0010
Email: thehub@cowandco-london.com
Web: cowandco-london.com

Agents note: All measurements are approximate and whilst every attempt has been made to ensure accuracy they are for general guidance only and must not be relied on. The fixture and fittings referred to have not been tested and therefore no guarantee can be given that they are in working order. Internal photographs are reproduced for general information and it must not be inferred that any item shown is included with the property.

Cow & Co
LONDON