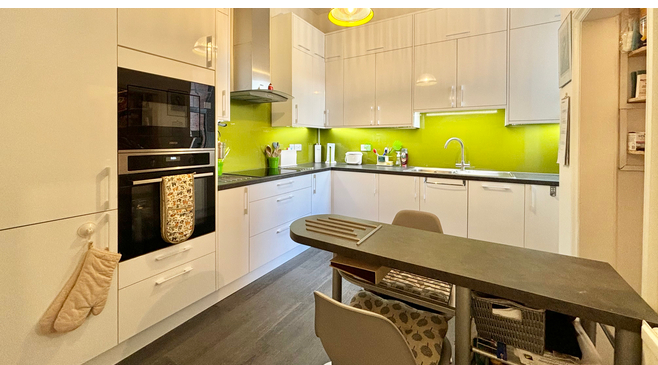




10b Cantelupe Road, Bexhill-on-Sea, East
Sussex, TN40 1JG

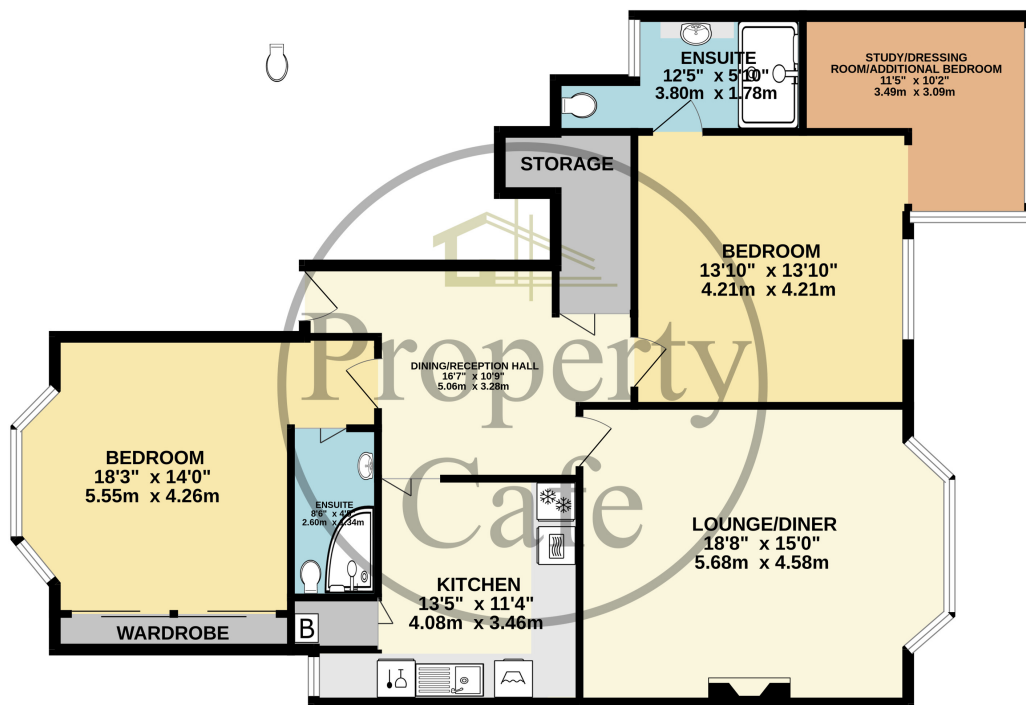
£300,000



- Elegant Edwardian Hall Floor Apartment
- Two Spacious Double Bedrooms
- South Facing Living Room (Lounge-Diner)
- Modern Kitchen & Bathroom
- Master Bedroom & En Suite Shower
- Additional Home Office / Study
- Located Close To Seafront & Station
- Lovely Original Character Features
- High Skirtings & Ceiling Rose's
- Elegant Living Room With South Facing Bay
- Ideal Town Centre Location
- A Beautifully Presented & Spacious Apartment
- Belongs To A Well Managed Building
- Long Lease & Share Of Freehold



GROUND FLOOR
1180 sq.ft. (109.6 sq.m.) approx.



TOTAL FLOOR AREA : 1180 sq.ft. (109.6 sq.m.) approx.

Whilst every attempt has been made to ensure the accuracy of the floorplan contained here, measurements of doors, windows, rooms and any other items are approximate and no responsibility is taken for any error, omission or mis-statement. This plan is for illustrative purposes only and should be used as such by any prospective purchaser. The services, systems and appliances shown have not been tested and no guarantee as to their operability or efficiency can be given.
 Made with Metropix ©2024.

