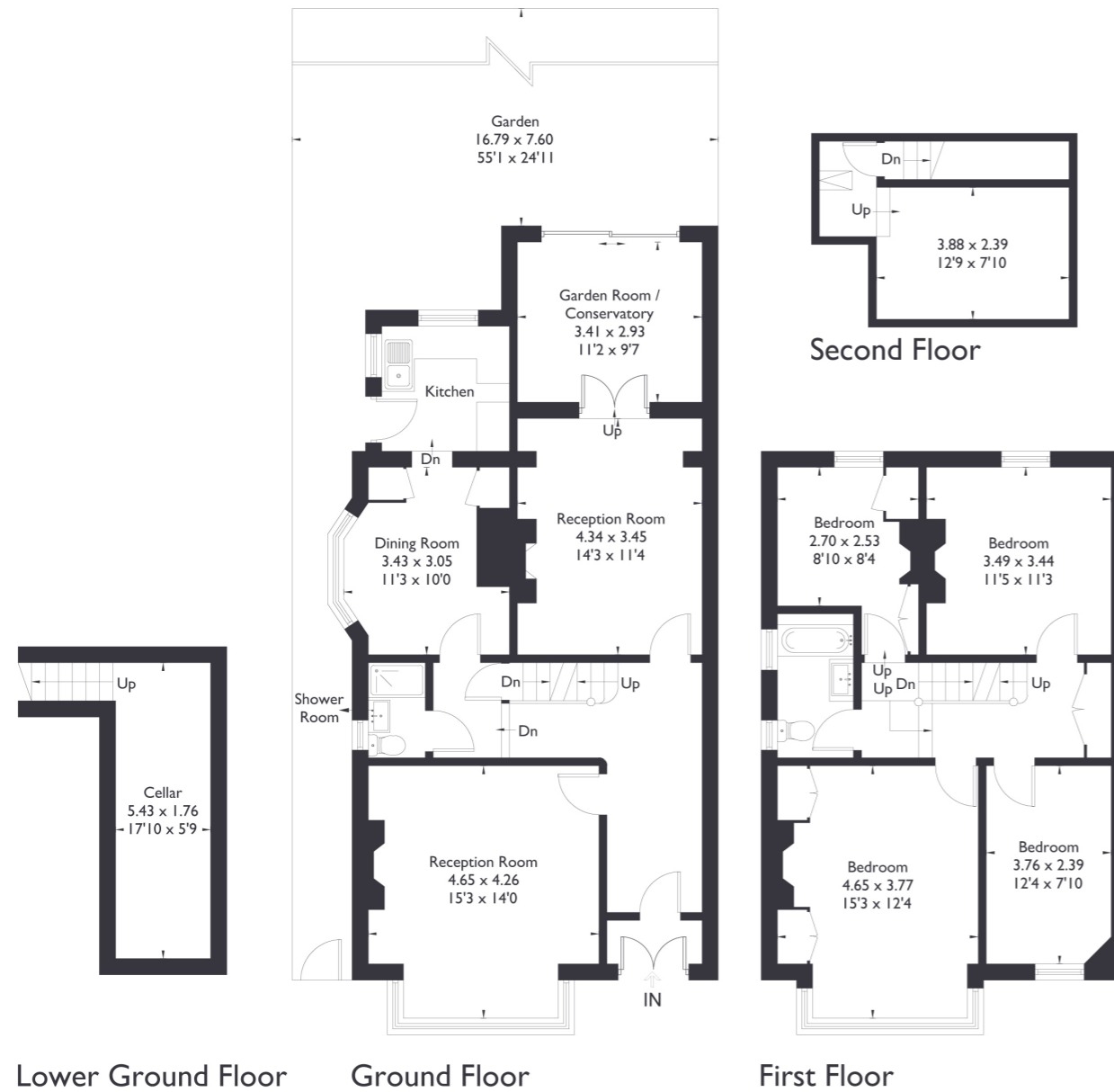


**Gloucester Road, W5**

Approximate Floor Area = 156.0 sq m / 1679 sq ft  
Cellar = 10.7 sq m / 115 sq ft  
Total = 166.7 sq m / 1794 sq ft



**4 BEDROOM HOUSE**

**Gloucester Road, W5**  
**£1,395,000**

Welcome to this charming end of terrace, four bedroom, two bathroom property, brimming with character and original features throughout. This home offers exceptional space and endless potential. As you enter, you're greeted by a stunning reception room at the front. Moving further in, you'll find another reception area, living space, and a dining room that opens onto a beautifully landscaped, east facing garden.

**FEATURES**

- Four Bedrooms
- One Bathroom/ Downstairs W/C
- Ealing Broadway/Northfield Amenities Nearby
- Great Location For School Catchments
- South Ealing Station (Piccadilly Line) 5 Min Walk.
- Off Street Parking



4 BEDROOM HOUSE

## Gloucester Road, W5

Toward the back of the house, a quaint kitchenette with a bay window flows into a well sized kitchen at the rear. Beyond this, you'll also find an underground cellar, offering fantastic additional storage space.

Upstairs, the property boasts four generously sized bedrooms and a family bathroom. The top floor offers a unique space, perfect for storage or an exciting opportunity to extend.

Situated in a prime location, the property is within easy reach of both South Ealing and Northfields stations, as well as the picturesque Lammas and Walpole Parks.

With Ealing Broadway and a variety of local amenities nearby, this home offers a perfect blend of convenience and tranquil living.

EPC Rating D.

