



51 Principal Court, Letchworth Garden City, Hertfordshire, SG6 1FL

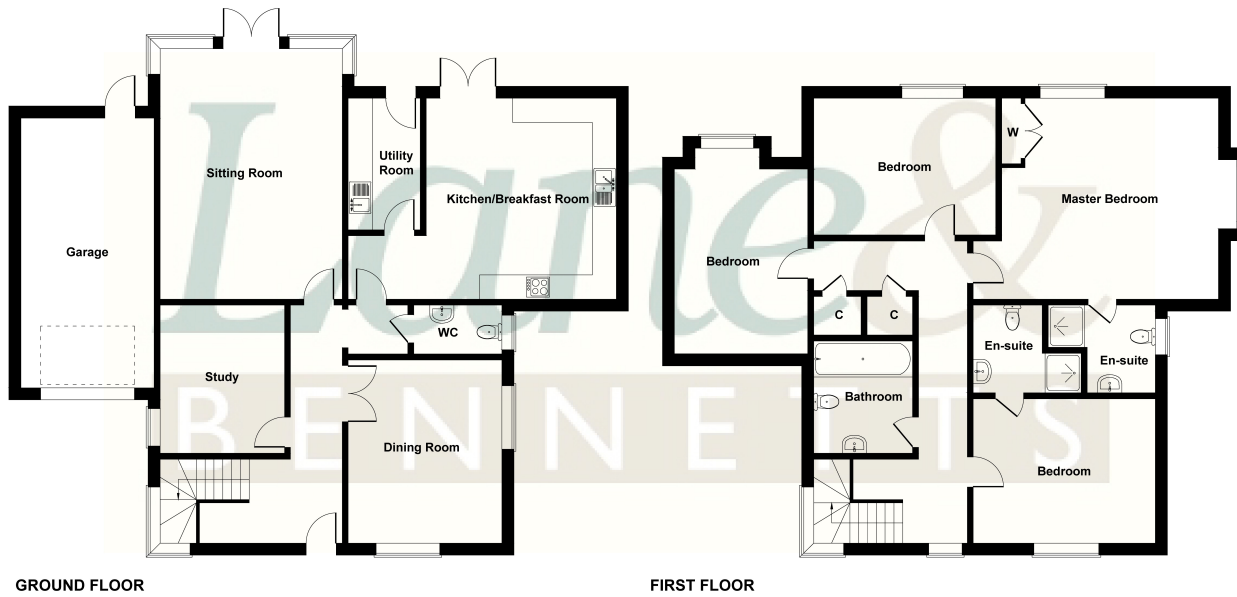
£690,000

Principal Court has a small private enclave of just five sizable four executive detached homes, and short walk to the beautiful 100 acre Norton Common. This property offers well appointed accommodation set over 2,600 Sq Ft/249.9 Sq M.

A large entrance hall with a wooden half turn staircase has storage below. The home office is to your left, and opposite a dual aspect dining room with wooden double doors. at the rear of the property is the immense sitting room, with French doors to the terrace. The Kitchen/Breakfast room could comfortably seat eight at a table, and offers a range of base and eye level units with fitted appliances. The adjacent utility room and the kitchen both have doors to rear.



51 Principal Court



GROUND FLOOR

FIRST FLOOR

Not to Scale. Produced by The Plan Portal 2023
For Illustrative Purposes Only.

- CHAIN FREE - AVAILABLE TO VIEW NOW
- FOUR BED DETACHED EXECUTIVE HOME
- SPACIOUS BRIGHT & AIRY ACCOMMODATION
- LARGE SITTING ROOM OPENING ONTO TERRACE
- VAST KITCHEN & BREAKFAST ROOM
- STUDY/HOME OFFICE
- DOUBLE DOOR DINING ROOM
- UTILITY & CLOAKROOM
- MAIN BED & GUEST ROOM WITH EN SUITE
- ADJACENT GARAGE WITH SEPRATE POWER & LIGHTING
- OFF ROAD PARKING
- FREEHOLD PROPERTY READY TO MOVE IN!

