

16 Sunnymead, Oakhill, BA3 5AX



£265,000 Freehold

This attractive brick built end terrace house occupies a corner plot with large rear garden, workshop and off road parking. Offered with no onward chain.

16 Sunnymead, Oakhill, BA3 5AX

 3  2  1 EPC D

£265,000 Freehold

DESCRIPTION

This mature three bedroom house offers well-proportioned accommodation in a popular Mendip village.

A double glazed door leads from the front into the spacious entrance hall with staircase rising to the first floor accommodation and doors to sitting room and kitchen. The good sized sitting room has a connecting door to the dining and a feature modern stone fireplace with side returns, mantel, hearth and an inset gas fire with back boiler. The kitchen is fitted with white base, wall and glazed units incorporating single drainer sink unit, work surfaces, a ceramic hob, a single oven, an extractor fan and a door to the adjoining dining room. There is also an understairs cupboard and a double glazed door to the outside. The dining room has a large picture window and built in cupboard.

On the first floor, there are three bedrooms (two doubles and a good size single). The family bathroom comprises a coloured suite of panel enclosed bath with mixer tap shower over, pedestal wash hand basin and low level wc.

OUTSIDE

Steps lead down to the front entrance door and a path continues to the side and rear. There are gardens on all three sides of the property which are laid mainly to lawn with a variety of shrubs garden is laid to lawn enclosed by a picket fence. At the bottom of the garden there is off road parking for several cars. Workshop with power and light.

ADDITIONAL INFORMATION

Gas fired central heating. All mains' services are connected. Council Tax Band A.

LOCATION

Oakhill lies within easy commuting distance of Bristol, Bath, Wells Shepton Mallet and Frome. The nearby main line rail links are situated at Castle Cary, Frome, Bath and Bristol. Within the village is a doctor's surgery, village church, village hall, a village foodie pub, the Mendip Inn restaurant and an excellent primary school.

DIRECTIONS

Leave Shepton Mallet heading north on the A37. Take the 2nd turning right signposted to Bath. On entering the village, take the 1st main turning left into the High Street. Continue along this road and on into Little London. The turning for Sunnymead is on the left hand side. The property is the last house on the left.

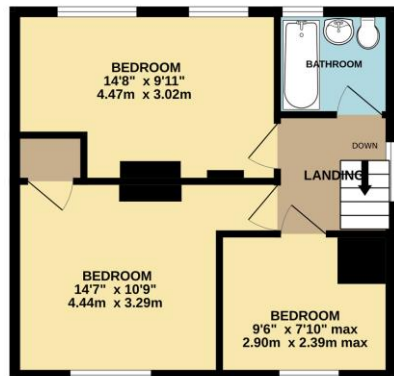




GROUND FLOOR



1ST FLOOR



Whilst every attempt has been made to ensure the accuracy of the floorplan contained here, measurements of doors, windows, rooms and any other items are approximate and no responsibility is taken for any error, omission or mis-statement. This plan is for illustrative purposes only and should be used as such by any prospective purchaser. The services, systems and appliances shown have not been tested and no guarantee as to their operability or efficiency can be given.
Made with Metropix ©2024

SHEPTON MALLET OFFICE
Telephone 01749 372200
32 High Street, Somerset, BA4 5AS
sheptonmallet@cooperandtanner.co.uk

COOPER
AND
TANNER

Important Notice: These particulars are set out as a general outline only for the guidance of intended purchasers and do not constitute, nor constitute part of, an offer or contract. All descriptions, dimensions, reference to condition and necessary permissions for use and occupation, warranties and other details are given without responsibility and any intending purchasers should not rely on them as statements or representations of fact but must satisfy themselves by inspection or otherwise as to the correctness of each of them.

