



## IMPERIAL COURT, HARROW

£1,750 pcm

A spacious and well maintained two double bedroom flat, conveniently located just a short distance from Rayners Lane Metropolitan/Piccadilly Line station and local shops. This lovely purpose built flat briefly comprises communal entrance hall, larger than average lounge, modern fitted kitchen with gas hob, two double bedrooms with an en suite to the master bedroom and a family bathroom. Other benefits are gas central heating, double glazing and furnished.

- TWO DOUBLE BEDROOMS
- SPACIOUS AND WELL MAINTAINED THROUGHOUT
- TWO BATHROOMS
- EN SUITE TO MASTER BEDROOM
- CONVENIENTLY LOCATED WITHIN 0.2 MILES OF RAYNERS LANE METROPOLITAN AND PICCADILLY LINE STATION
- DOUBLE GLAZING AND GAS CENTRAL HEATING
- FURNISHED

Entrance Hall

Lounge

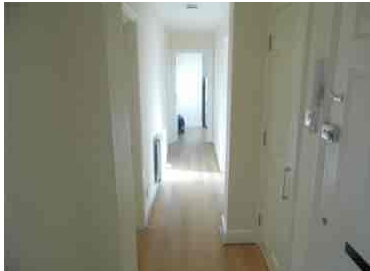
Kitchen

Bedroom One

Ensuite

Bedroom Two

Bathroom



DISCLAIMER: These particulars, whilst believed to be accurate are set out as a general outline only for guidance and do not constitute any part of an offer or contract. Intending purchasers should not rely on them as statements or representation of fact, but must satisfy themselves by inspection or otherwise as to their accuracy. We have not carried out a detailed survey nor tested the services, appliances and specific fittings. Room sizes should not be relied upon for carpets and furnishings. The measurements given are approximate. No person in this firms employment has the authority to make or give any representation or warranty in respect of the property.

