



HOUSEFOX.CO.UK

Full estate agency service at online prices

e: sales@housefox.co.uk | w: www.housefox.co.uk



Apartment 5, 7 Royal Crescent, Weston-Super-Mare, Somerset, BS23 2AX
£155,000

01934 314242 01275 404601 01278 557700
Viewings strictly by appointment



HOUSEFOX.CO.UK

Description

HOUSE FOX ESTATE AGENTS PRESENTS.....Nestled within the esteemed Royal Crescent, just a stone's throw away from the picturesque seafront, this stunning first floor apartment offers a lifestyle of unparalleled luxury and convenience. Situated mere steps from the beach, vibrant cafes, renowned restaurants, lively bars, and the iconic Grand Pier, this residence presents an enviable opportunity to indulge in coastal living at its finest.

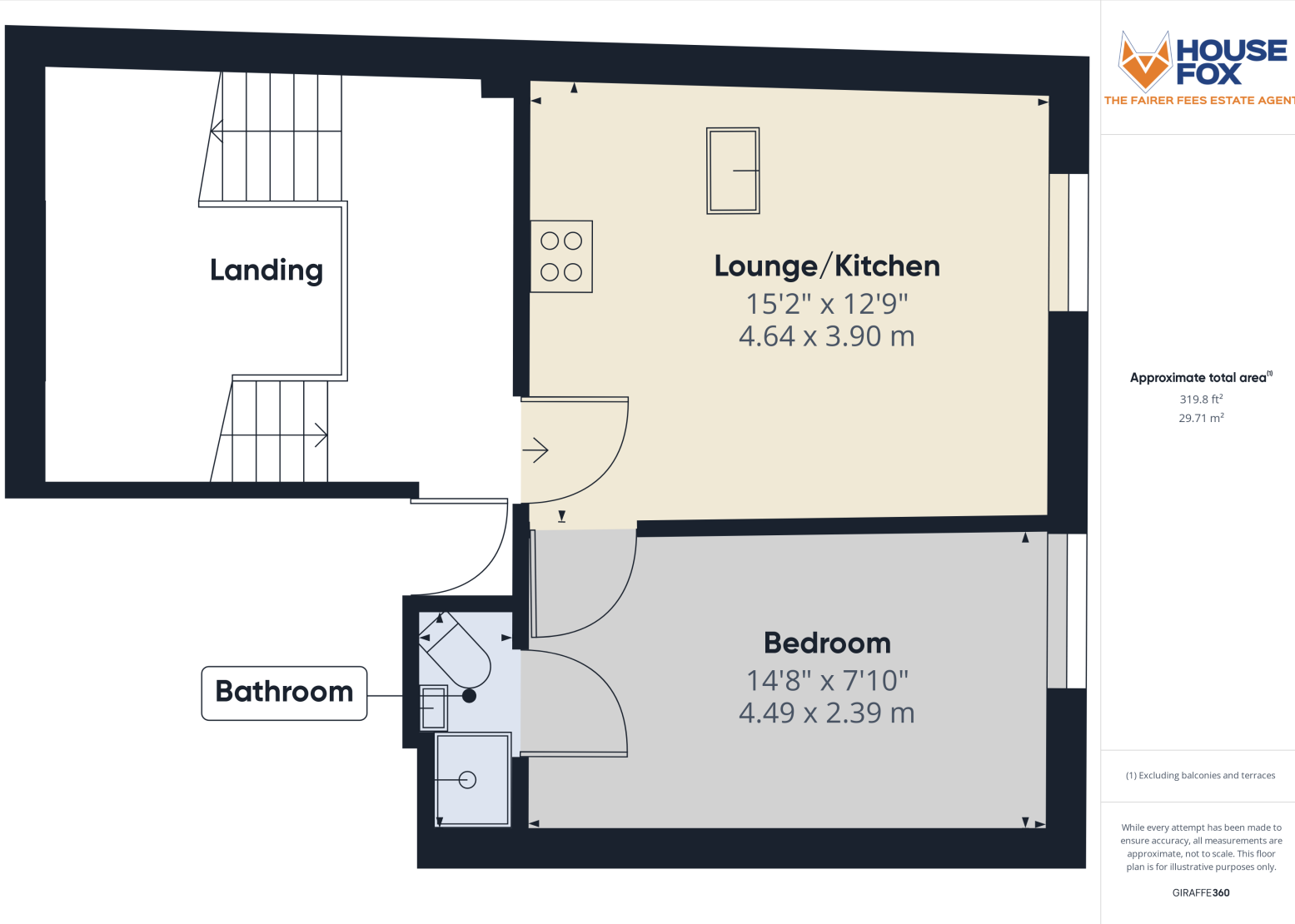
Impeccably refurbished to the highest standards, this apartment exudes sophistication and style at every turn. The interior space is thoughtfully designed to maximize comfort and functionality, ensuring a truly exceptional living experience.

Upon entry, you are greeted by a beautifully appointed lounge/kitchen area, where natural light floods through, creating a bright and inviting ambiance. The open-plan layout seamlessly integrates the modern kitchen with the elegant living space, ideal for both relaxation and entertaining.

The apartment features a generously sized double bedroom, providing a tranquil retreat for rest and relaxation. An en-suite shower room adds a touch of luxury, offering convenience and privacy for residents.

Modern electric heating ensures optimal comfort throughout the year, while a small separate office/storage area provides versatility and practicality to suit the needs of the modern lifestyle.

In summary, this first floor apartment in the prestigious Royal Crescent offers an unrivalled opportunity to embrace coastal living at its finest. With its prime location, impeccable refurbishment, and thoughtful design, this residence represents the epitome of luxury and convenience.



A survey has not been carried out, nor have the services, appliances or fittings been tested. All measurements are approximate and should not be relied upon for furnishing purposes.