



Solicitors & Estate Agents

Clarewood, Woodhead Street, High Valleyfield, Dunfermline, KY12 8SH



Working harder for you

Quote



3 bedrooms



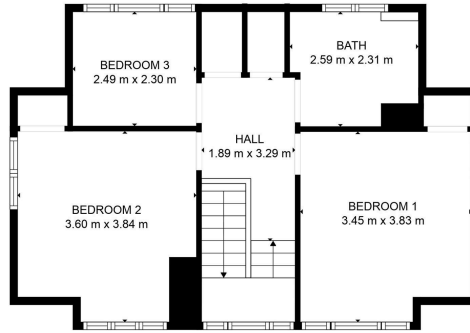
2 public



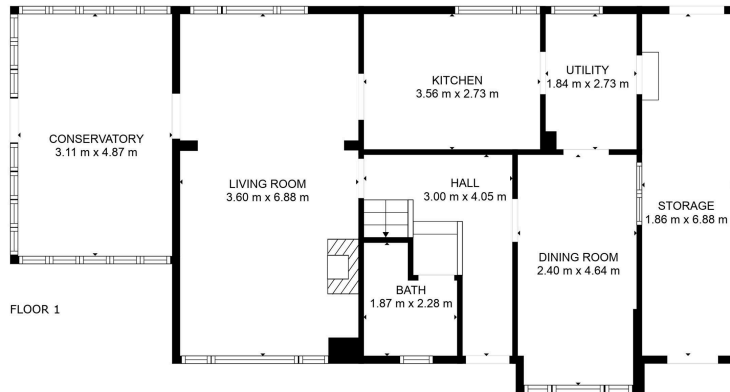
2 bathrooms



- + A spacious family home, sitting within expansive, private gardens
- + Built in the 1950s, Clarewood is a unique home located within a quiet village setting and offers flexible accommodation
- + Private driveway with parking for several cars
- + Mature gardens to the front with neat lawn to the rear of the home
- + Convenient for transport links to Kincardine Bridge and onto Edinburgh, Glasgow and Stirling
- + Local amenities available with further amenities available in nearby Dunfermline including various supermarkets, restaurants and bars. Primary schooling available locally with transport links to secondary schooling
- + Entrance hall with WC
- + Formal living room leading through to conservatory
- + Galley style kitchen with ample floor and wall mounted storage. External store leading through to garage. Separate dining room/bedroom 4
- + Three double bedrooms on the first floor with views towards to the Forth Estuary
- + Family bathroom with three piece suite and wet wall finish
- + Storage within the landing
- + Rarely available on the market and viewing comes highly recommended



FLOOR 2



FLOOR 1

TOTAL: 132 m²
 FLOOR 1: 80 m², FLOOR 2: 52 m²
 EXCLUDED AREAS: STORAGE: 13 m², LOW CEILING: 0 m²

MEASUREMENTS ARE CALCULATED BY CUBICASA TECHNOLOGY. DEEMED HIGHLY RELIABLE BUT NOT GUARANTEED.

Living Room	3.60 m x 6.88 m / 11'10" x 22'7"	Bedroom 3	2.49 m x 2.30 m / 8'2" x 7'7"
Dining Room	2.40 m x 4.64 m / 7'10" x 15'3"	Bathroom	2.59 m x 2.31 m / 8'6" x 7'7"
Kitchen	3.56 m x 2.73 m / 11'8" x 8'11"		
Bedroom 1	3.45 m x 3.83 m / 11'4" x 12'7"		
Bedroom 2	3.60 m x 3.84 m / 11'10" x 12'7"		



Sharing is caring!

6/8 Bonnar Street,
 Dunfermline KY12 7JR

T: 01383 629720 F: 01383 621333, DX DF69



W: maloco.co.uk