

SOLE
AGENT

Reddoh

Rue Des Marais | Vale | GY6 8BA

This detached family home is located in a quiet lane near the West Coast with Grandes Rocques and Cobo amenities a comfortable walk away. Accommodation comprises lounge/diner, kitchen, three bedrooms and a bathroom. To the rear of the property is a low maintenance garden laid to lawn. In addition to the garage, the driveway provides parking for two cars. Regret no smokers or sharers. Pet considered. Available mid-April 2026.

3 BEDROOMS

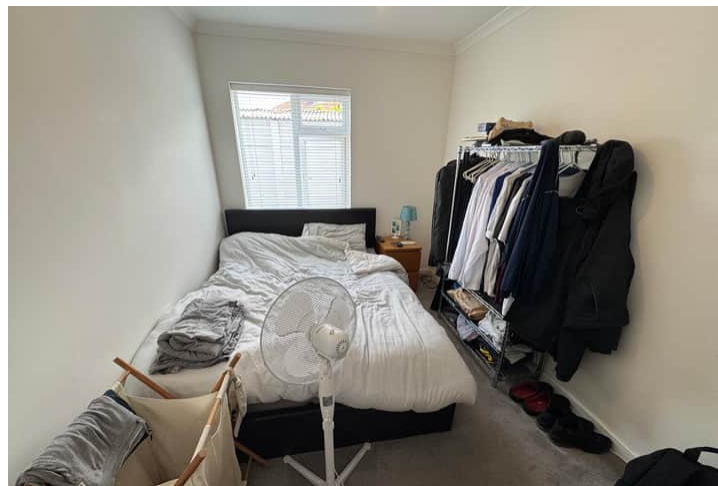
1 BATHROOM

1 RECEPTION

£2,800 pcm

Shields
& Rutland

PHOTOS



PHOTOS



SPECIFICATIONS

Entrance Hall

4.96m x 1.19m (16' 3" x 3' 11")

Kitchen

4.21m x 3.15m (13' 10" x 10' 4")

Lounge/Diner

4.19m x 3.47m (13' 9" x 11' 5")

Bedroom 1

3.83m x 3.52m (12' 7" x 11' 7")

Bedroom 2

3.67m x 3.03m (12' 0" x 9' 11")

Bedroom 3

3.60m x 2.43m (11' 10" x 8' 0")

Bathroom

1.93m x 1.75m (6' 4" x 5' 9")

Garden

To the rear of the property is a low maintenance garden laid to lawn.

Parking

In addition to the garage, there is parking for two cars.

PRICE INCLUDES

Blinds, flooring and light fittings

SPECIAL FEATURES

- West coast nearby
- Quiet location
- Low maintenance garden
- Garage

SERVICES

Mains water, electricity and drainage. Oil heating.

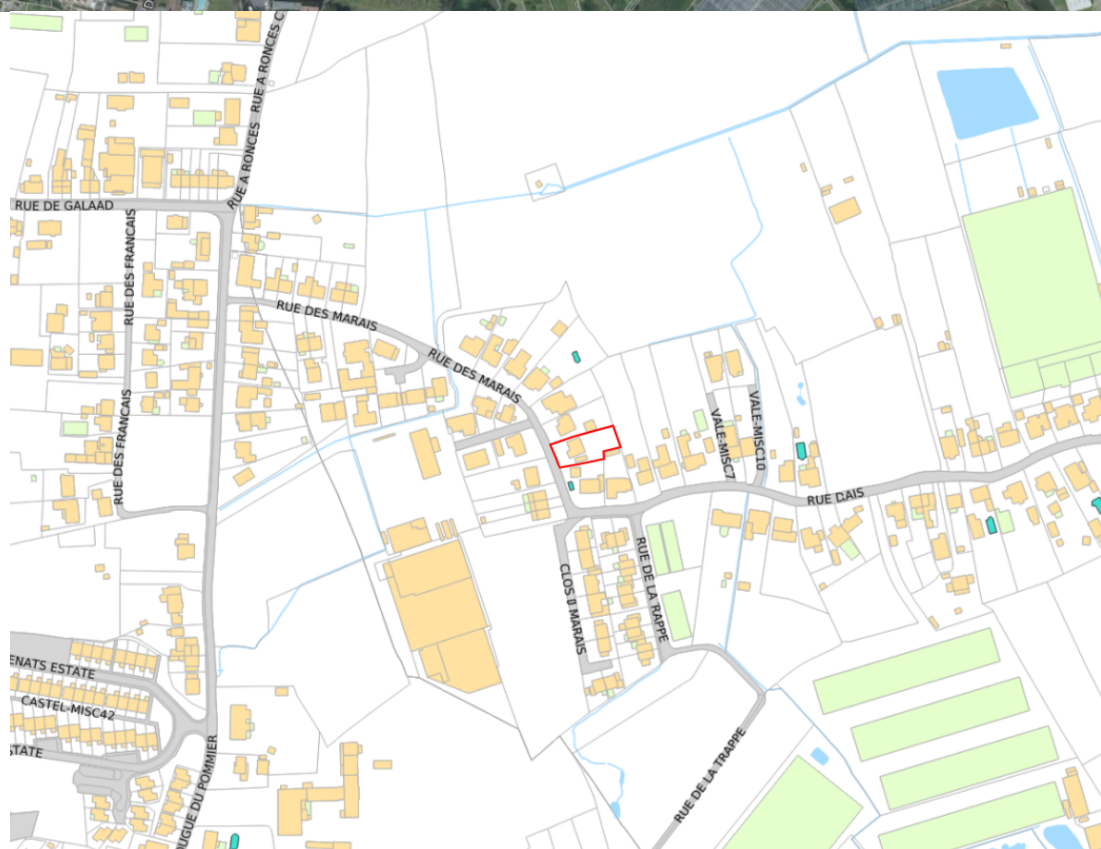
APPLIANCES INCLUDED

- Zanussi microwave
- Zanussi oven
- Zanussi washing machine
- Zanussi dishwasher
- Zanussi extractor
- Zanussi induction hob

SCHOOL CATCHMENT

La Mare de Carteret Primary School and High School

FLOORPLAN



T 01481 714445
E info@shieldsandrutland.gg

Shields & Rutland, Le Foulon Business Centre Le Foulon, St Peter Port,
GY1 1YR

shieldsandrutland.gg

Shields
& Rutland

OPENING DOORS SINCE 1993