



Tel: 01242 676767

www.cotswoldestateagents.co.uk

41a Church Road, Bishops Cleeve, Cheltenham, GL52 8LP

14, Barleyfields Avenue
Bishops Cleeve GL52 8FL



FOR SALE

A spacious recently built, Bromford Homes shared ownership , two double bedroom semi detached house. The property is offered for sale at a 59% share with further shares available, or can be purchased outright for £290,000. This smart property is situated in a desirable residential area, being convenient to local amenities and the village centre with its wide range of shopping facilities.

Entrance porch to entrance hall with doors to cloakroom, lounge/diner, kitchen and stairs to landing and first floor living accommodation. Cloakroom: modern white suite. Lounge/diner: window and French doors to patio and rear garden and large walk-in storage cupboard.

Kitchen: window to front aspect, modern kitchen fitted with a matching range of eye and base level storage units, built-in fan assisted oven and extractor hood, appliance space and matching cupboard housing gas combination boiler.

First floor landing, trap to loft space, doors to bathroom and bedrooms one and two. Bathroom: window to rear aspect, modern white suite comprising bath fitted with tiled splashbacks, wash basin, WC and chrome heated towel rail radiator. Bedroom one: window to front aspect, built-in double wardrobe and airing cupboard. Bedroom two: window to rear aspect.

Exterior: Front garden being woodchipped with baby privet hedging, there is a driveway at the side of the property offering parking for 2 vehicles and gated side access to rear garden. Rear garden: South facing being enclosed with wooden panel fencing benefiting from two separate patio areas and laid to lawn with raised planters and garden shed, water tap at front of property and outside power points in rear garden.

Lounge/diner: 16' 3 max x 14' 5

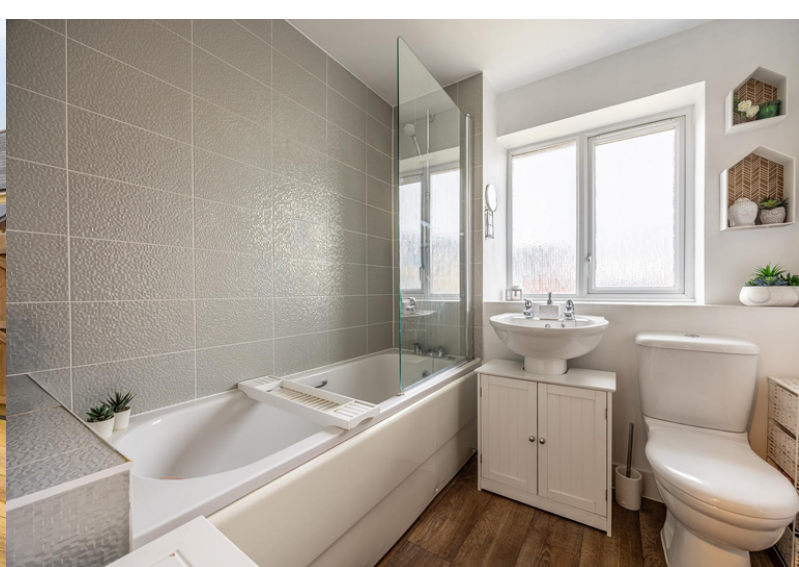
Kitchen: 11' 3 x 8' 4

Bedroom one: 14' 1 max x 11' 1

Bedroom two: 14' x 8' 8

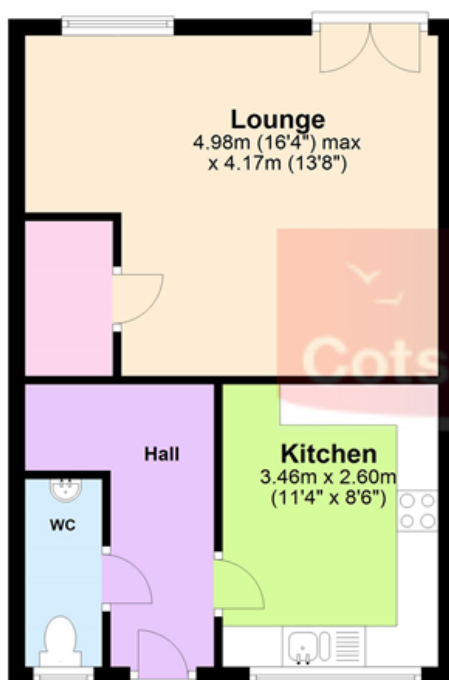






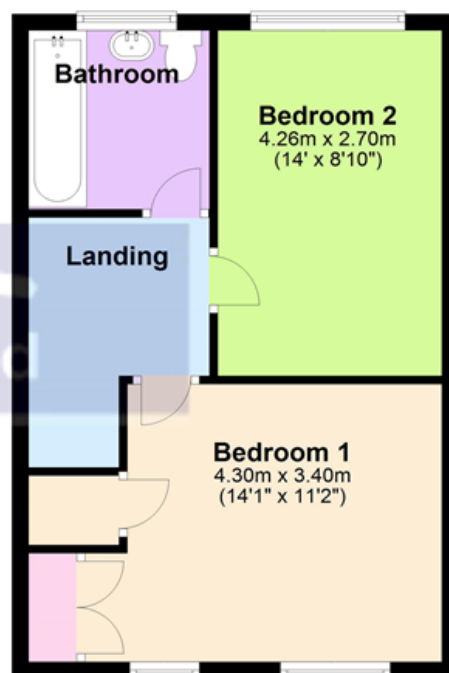
Ground Floor

Approx. 38.5 sq. metres (414.4 sq. feet)



First Floor

Approx. 38.5 sq. metres (414.0 sq. feet)



Total area: approx. 77.0 sq. metres (828.3 sq. feet)