



Guide Price £550,000
Harborough Avenue, Sidcup, Kent,
DA15 8HP

Christopher
Russell
PROPERTY SERVICES



AGENTS NOTES: No statement in these particulars is to be relied upon as representations of fact and purchasers should satisfy themselves by inspection, or otherwise, as to the accuracy of the statements contained herein. These details do not constitute any part of any offer or contract. Christopher Russell have not tested any equipment or heating system mentioned and purchasers are advised to satisfy themselves as to their working order. Great care is taken when measuring but measurements should not be relied upon for ordering carpets, equipment etc.

Christopher Russell LLP. Registered in Cardiff. Partnership No. OC329088

Guide Price £550,000 to £575,000.

Three double bedroom end terrace house with the versatility to have a fourth bedroom on the ground floor situated in a very popular Avenue very convenient for Days Lane and Our Lady of the Rosary Primary, Chislehurst and Sidcup and Bexley Grammar Schools.

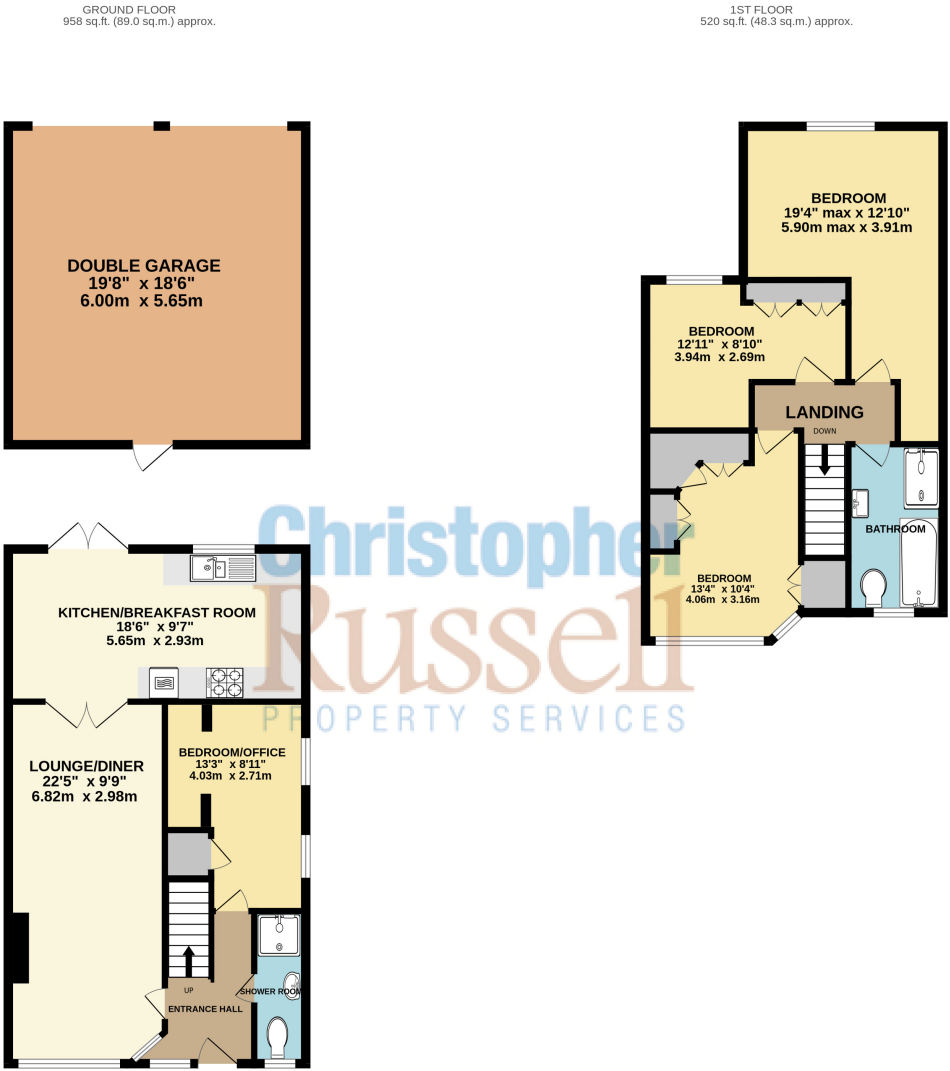
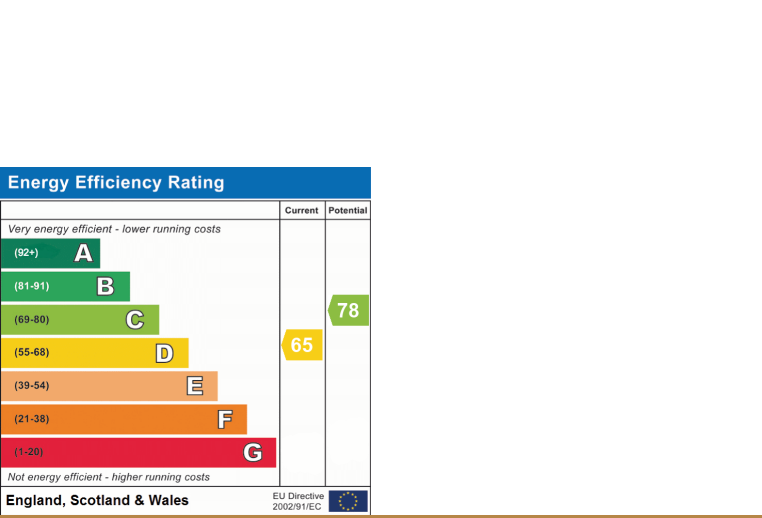
Well located with great transport facilities to Sidcup and New Eltham train stations this well-presented property has been thoughtfully extended on the ground and first floor to now comprise; Entrance Hall, cloakroom/WC, through lounge, bedroom 4/ study and a kitchen diner on the ground floor with three double bedrooms and a family bathroom on the first floor.

Presented in good decorative condition the property features a modern fitted kitchen, modern four piece bathroom suite, fitted wardrobes to three bedrooms, gas central heating and double glazing.

Outside there is a driveway at the front that provides off street parking.

The rear garden extends approximately 70ft laid mainly to lawn with a large patio and lawn. There is access to a detached double garage and a rear service road provides access to it.

Council Tax Band D.



TOTAL FLOOR AREA : 1478 sq.ft. (137.3 sq.m.) approx.
Whilst every attempt has been made to ensure the accuracy of the floorplan contained here, measurements of doors, windows, rooms and any other items are approximate and no responsibility is taken for any error, omission or mis-statement. This plan is for illustrative purposes only and should be used as such by any prospective purchaser. The services, systems and appliances shown have not been tested and no guarantee as to their operability or efficiency can be given.
Made with Metropix ©2025