

The Stocks

Seend, SN12 6PL

COOPER
AND
TANNER



£270,000

A delightful end terraced cottage having natural stone elevations under a tiled roof. This charming home offers deceptive accommodation and is situated on the outskirts of this desirable village with far reaching views. The home is offered with no chain and a viewing is recommended. Call for more details and access arrangements. The accommodation in brief comprises porch, kitchen, lounge, landing, two bedrooms, shower room.

The Stocks

Seend

SN12 6PL

 2  1  1 EPC TBC

£270,000

LOCATION

A delightful end terraced cottage having natural stone elevations under a tiled roof. This charming home offers deceptive accommodation and is situated on the outskirts of this desirable village with far reaching views. The home is offered with no chain and a viewing is recommended. Call for more details and access arrangements. The accommodation in brief comprises porch, kitchen, lounge, landing, two bedrooms, shower room. The accommodation comprises an entrance porch, fitted kitchen and plumbing for washing machine, sitting room with beams, two bedrooms, shower room. Viewing advised

PARKING

A drive offers private parking

LOCATION

The hamlet of Seend Cleeve is a very popular location, having two thriving public houses and pleasing walks along the canal tow path. The village has a thriving community and is well known for its many fine period buildings that run along the High Street. A wide range of amenities including a local store/post office, a Church, primary school, playing field, village hall and community centre. Seend is five miles west of the historic market town of Devizes and the major centres of Bath, Chippenham and Salisbury are all within a 25 mile radius.

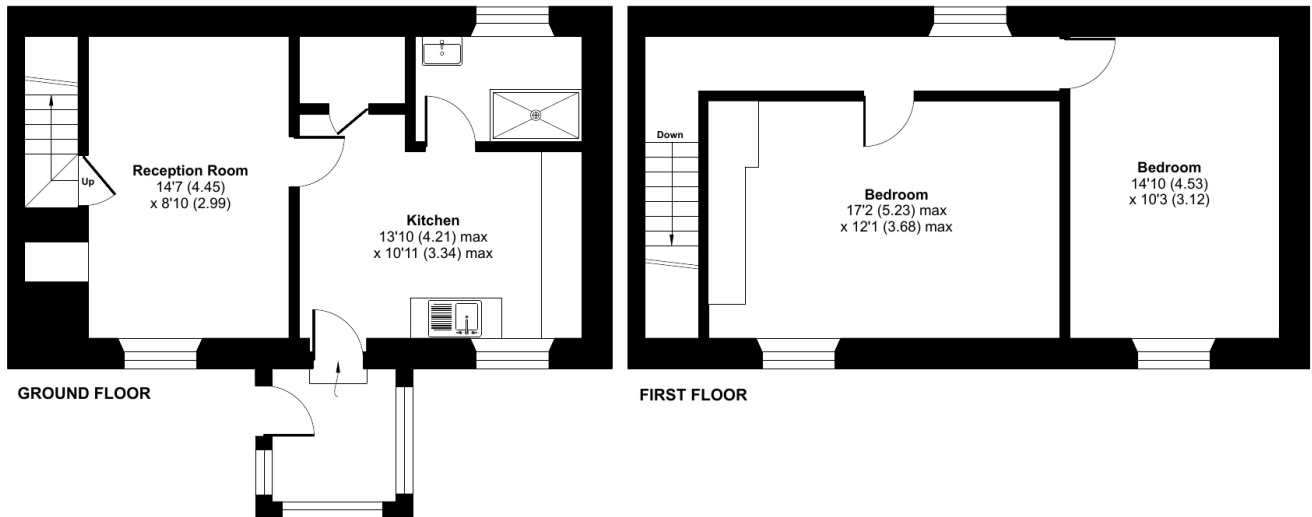




The Stocks, Seend, Melksham, SN12

Approximate Area = 893 sq ft / 82.9 sq m

For identification only - Not to scale



Floor plan produced in accordance with RICS Property Measurement 2nd Edition, Incorporating International Property Measurement Standards (IPMS2 Residential). © nitchecom 2025. Produced for Cooper and Tanner. REF: 1287933

WARMINSTER OFFICE

Telephone 01985 215579

48-50, Market Place, Warminster, Wiltshire BA12 9AN

warminster@cooperandtanner.co.uk

**COOPER
AND
TANNER**

Important Notice: These particulars are set out as a general outline only for the guidance of intended purchasers and do not constitute, nor constitute part of, an offer or contract. All descriptions, dimensions, reference to condition and necessary permissions for use and occupation, warranties and other details are given without responsibility and any intending purchasers should not rely on the same as statements or representations of fact but must satisfy themselves by inspection or otherwise as to the correctness of each of them.

