



VIDEO TOUR AVAILABLE



125 Laburnum Avenue, Dartford, Kent, DA1 2QW
OIEO £400,000 Freehold



Energy Efficiency Rating		Current	Potential
Very energy efficient - lower running costs			
92 to 100	A		
81 to 91	B		
69 to 80	C		77
55 to 68	D	58	
39 to 54	E		
21 to 38	F		
1 to 20	G		
Not energy efficient - higher running costs			
England, Wales & N.Ireland		EU Directive 2002/91/EC	

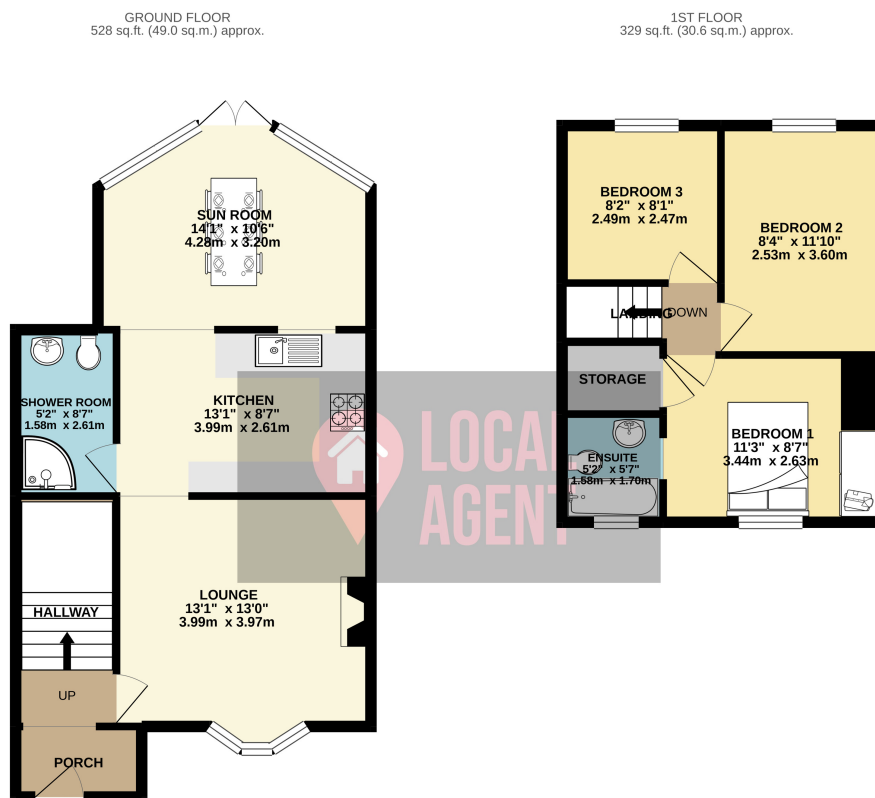
Description

If you are after a property that you can just move into with little or no effort, we may have just found it for you. This three bedroom terrace house is one of the best houses to come onto the market this year. It really is just stunning but do not take my word for it, if you are looking for an absolute gem of a property please request a viewing now on our online diary.

This stunning property has been re-rendered outside with a contemporary white clour which is very striking against the grey double glazed windows and front door. The property comprises of a good size porch which benefits from handy storage cupboards and cubby holes. To the rear of this is a beautifully decorated lounge that has a log burner and built in TV enclosure and cupboard to hide satellite receivers and wires. To the rear of this is gorgeous fitted kitchen with appliances, to the side of this is a shower room and to the rear there is a very bright sunroom which is an ideal place to have your evening meal. Upstairs there are three bedrooms and off of the main bedroom there is an en-suite bathroom. Outside to the rear there is a low maintenance garden with decking and to the front there is a block paved driveway.

The property is situated at the end of a cul-de-sac and it is very close to Dartford Golf club and Dartford town centre. There are a few good schools nearby and there are even a boys and a girls grammar school within access. The closes station is Dartford and this (according to Google Maps) is just 1.3 miles away.

This property will not be on the market for very long so do not waste time and book your viewing now



TOTAL FLOOR AREA: 857 sq.ft. (79.6 sq.m.) approx.

Whilst every attempt has been made to ensure the accuracy of the floorplan contained here, measurements of floor area are not guaranteed to be accurate and are for information only.