

£289,995  
Freehold



**THOMAS CONNOLLY**  
ESTATE AGENTS | LETTING AGENTS | NEW HOMES | PROPERTY MANAGEMENT



## Summary of Property

Thomas Connolly Estate Agents are delighted to present this two bedroom house situated in the sought after location of Fenny Stratford , offering numerous amenities including schools, shops, traffic links and the grand union canal.

Accommodation briefly comprises; entrance hall, Kitchen and sitting room, First floor accommodation offers; two bedrooms and a family bathroom. Outside there is an enclosed garden to the rear featuring a patio with gated access. To the front there is a driveway providing off road parking for one vehicle. The property further benefits from double glazing.

Please contact Thomas Connolly Estate Agents for further information relating to this property or to confirm viewing arrangements.

## Room Descriptions

### ENTRANCE HALL

#### KITCHEN

6' 9" x 9' 9" (2.06m x 2.97m)

#### SITTING ROOM

11' 8" x 13' 6" (3.56m x 4.11m)

### FIRST FLOOR

#### BEDROOM ONE

10' 3" x 11' 9" (3.12m x 3.58m)

#### BEDROOM TWO

8' 8" x 7' 8" (2.64m x 2.34m)

#### BATHROOM

5' 5" x 8' 8" (1.65m x 2.64m)

### FRONT AND REAR GARDENS

### PARKING OFF ROAD FOR ONE CAR

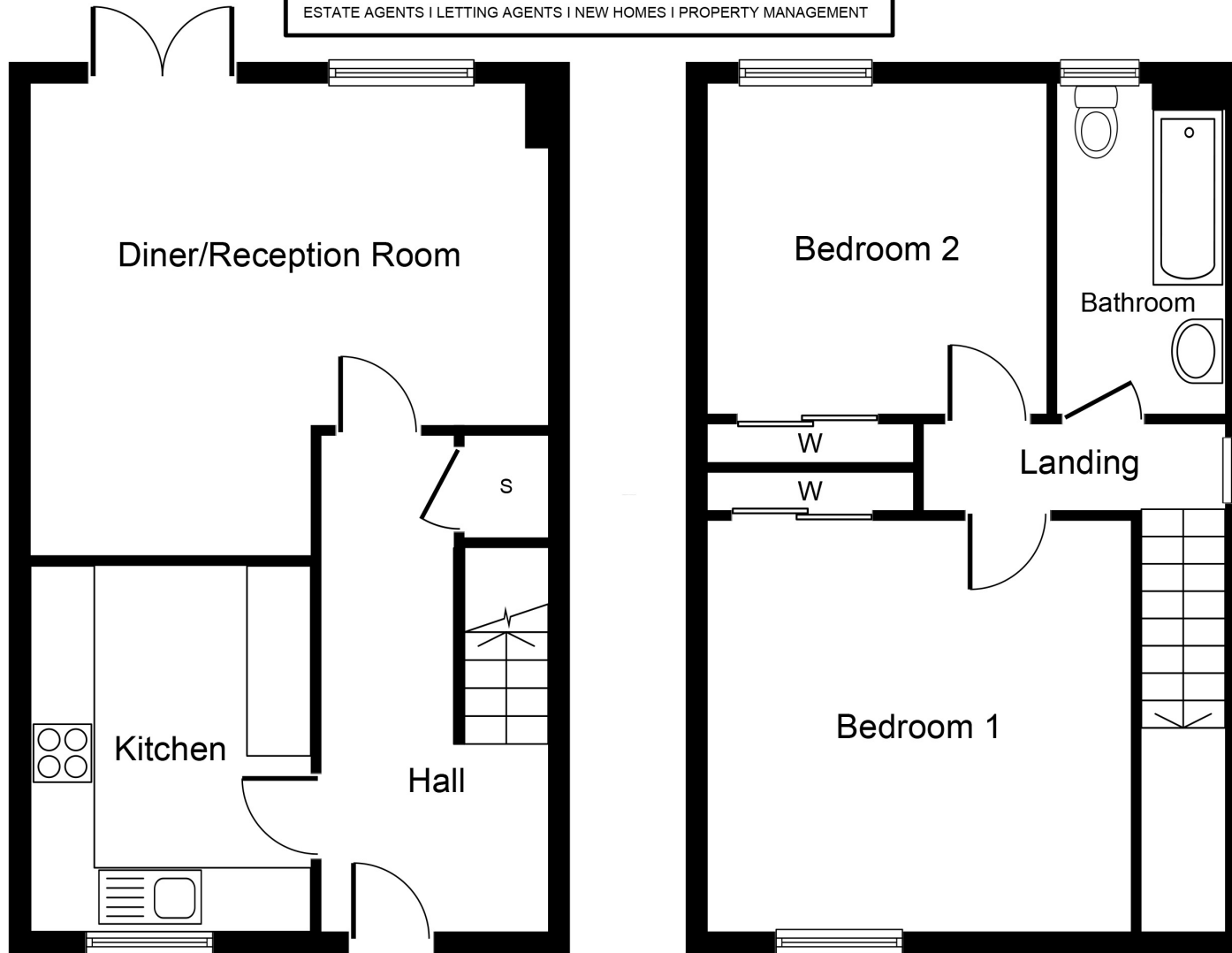
#### PLEASE NOTE

0' 0" x 0' 0" (0.00m x 0.00m) These property particulars do not constitute part or all of an offer or contract. All measurements are stated for guidance purposes only and may be incorrect. Details of any contents mentioned are supplied for guidance only and must also be considered as potentially incorrect. Thomas Connolly Estate Agents advise perspective buyers to recheck all measurements prior to committing to any expense. We confirm we have not tested any apparatus, equipment, fixtures, fittings or services and it is within the prospective buyers interests to check the working condition of any appliances prior to exchange of contracts. Thomas Connolly Estate Agents has not sought to verify the legal title of the property and the buyers must obtain verification from their solicitor



# THOMAS CONNOLLY

ESTATE AGENTS | LETTING AGENTS | NEW HOMES | PROPERTY MANAGEMENT



**Ground Floor**

**First Floor**

Whilst every attempt has been made to ensure the accuracy of the floor plan contained here, measurements of doors, windows, rooms and any other items are approximate and no responsibility is taken for any error, omission, or mis-statement. This plan is for illustrative purposes only and should be used as such by any prospective purchaser or tenant. The services, systems and appliances shown have not been tested and no guarantee as to their operability or efficiency can be given.

Copyright V360 Ltd 2024 | [www.houseviz.com](http://www.houseviz.com)