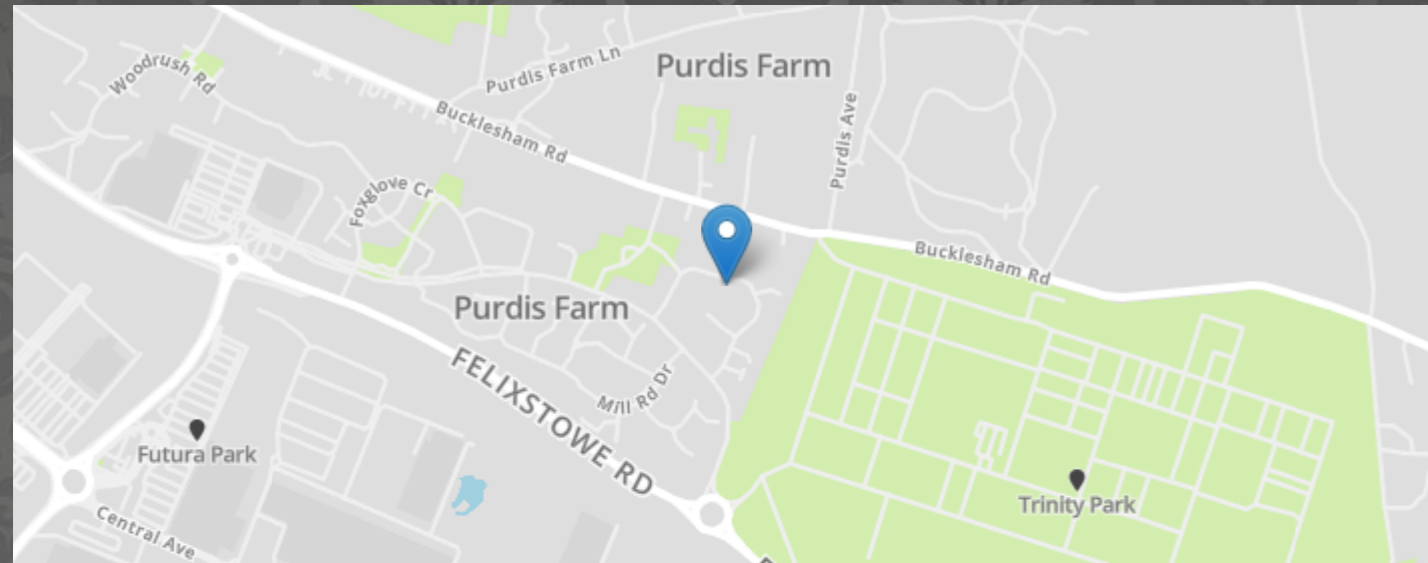


Meadow Crescent, Purdis Farm, Ipswich



- TOWN HOUSE
- EN-SUITE
- CLOSE TO AMENITIES
- GAS CENTRAL HEATING
- DOUBLE GLAZED THROUGHOUT
- FOUR BEDROOMS
- OFF ROAD CAR PARKING & GARAGE
- EASY ACCESS TO A14
- TWO RECEPTION ROOMS
- GARDEN

MARKS & MANN

99-101 Penshurst Rd, Ipswich, Suffolk, IP3 8QB.

01473 396 296

contactipswich@marksandmann.co.uk

Website www.marksandmann.co.uk

MARKS & MANN



Meadow Crescent, Purdis Farm, Ipswich

Introduced to the market for sale is this exceptionally well kept and presented four bedroom semi-detached town house set over three floors. Positioned in an ideal location on Purdis farm to the East side of Ipswich close to schools amenities and easy access to the A14.

Internally the property benefits from, on the ground floor: Entrance hall, dining room, kitchen and cloakroom. To the first floor: Landing, living room and master bedroom which features a built in wardrobe and En-suite. To the top floor: Landing, family bathroom, bedroom two, bedroom three and bedroom four. Externally the property benefits from off road parking for multiple vehicles plus a garage and a garden to the rear which features decking area, lawn, patio space and garden shed.

The property has made a fantastic home over the course of ownership and is now ready for new owners to come in and make it their own.

Call now to register your interest and arrange a private first hand viewing.

£365,000

Meadow Crescent, Purdis Farm, Ipswich

Meadow Crescent, Purdis Farm, Ipswich

Entrance hall

Front door, radiator.

Dining room

2.95m x 3.87m (9' 8" x 12' 8")
Double glazed window to front aspect, radiator.

Kitchen

3.81m x 5.51m (12' 6" x 18' 1")
Double glazed window to rear aspect, French doors to rear garden, integrated cooker, hob, extractor, sink/draining board, ceiling spot lights, radiator.

Cloakroom

Basin, low level WC, heated towel rail.

Landing

Radiator.

Bedroom

3.002m x 3.048m (9' 10" x 10' 0")
Double glazed window to rear aspect, fitted wardrobes, radiator.

En-suite

Double glazed window to rear aspect, shower cubicle, basin, low level WC, heated towel rail.

Living room

3.87m x 5.33m (12' 8" x 17' 6")
Dual double glazed window to front aspect, radiator.

Landing

Bedroom

2.96m x 4.38m (9' 9" x 14' 4")
Double glazed window to rear aspect, radiator.

Bedroom

3.29m x 2.92m (10' 10" x 9' 7")
Double glazed window to front aspect, radiator.

Bedroom

2.71m x 2.49m (8' 11" x 8' 2")
Double glazed window to rear aspect, radiator.

Bathroom

Double glazed window to rear aspect, shower cubicle, bath, basin, low level WC.

Garden

Decking area, lawn, garden shed.

Garage

Disclaimer

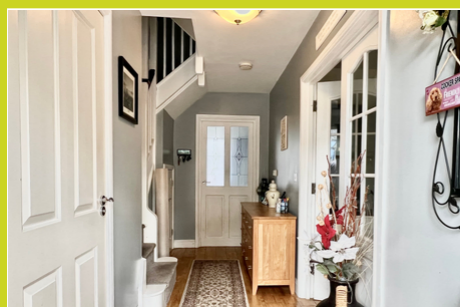
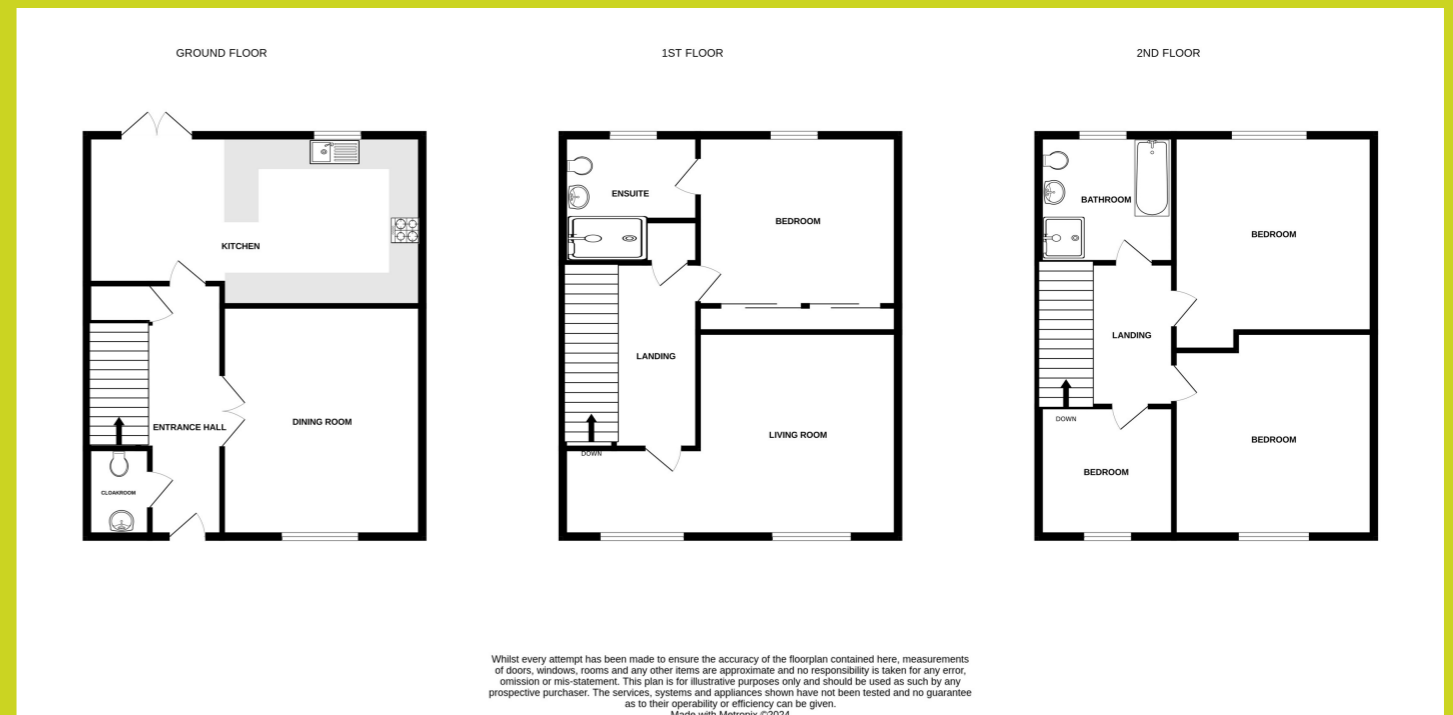
In accordance with Consumer Protection from Unfair Trading Regulations, Marks and Mann Estate Agents have prepared these sales particulars as a general guide only. Reasonable endeavours have been made to ensure that the information given in these particulars is materially correct but any intending purchaser should satisfy themselves by inspection, searches, enquiries and survey as to the correctness of each statement. No statement in these particulars is to be relied upon as a statement or representation of fact. Any areas, measurements or distances are only approximate. New build properties - the developer may reserve the right to make any alterations up until exchange of contracts.

Money Laundering Regulations

Intending purchasers will be asked to produce identification documentation at a later stage and we would ask for your co-operation in order that there will be no delay in agreeing the sale.

Council Tax Band

At the time of writing the council tax band for this property is band D.



The above floor plans are not to scale and are shown for indication purposes only.

