



*17 Wedgwood Drive, Warrington, Cheshire. WA4
6GA.
Offers Over £257,500*

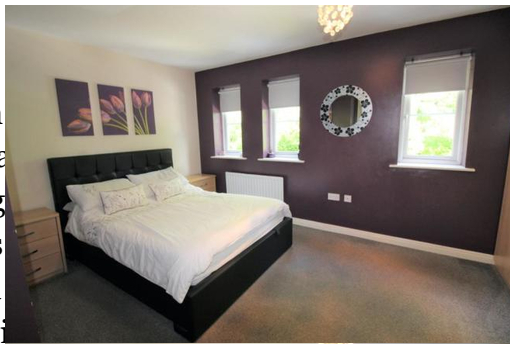
Three Bedrooms | Modern Fittings Throughout | South Facing Rear Garden | Gas Central Heated |
Great Location |





While every attempt has been made to ensure the accuracy of the floorplans contained herein, measurements of doors, windows, rooms and any other items are approximate and no responsibility is taken for any error, omission or mis-statement. This plan is for illustrative purposes only and should be used as such by any prospective purchaser. The services, systems and appliances shown have not been tested and no guarantee as to their operability or efficiency can be given.
Made with Metroplan ©2022

This exceptional semi-detached property offers an excellent opportunity to purchase either your first home or even an investment with a private aspect to the front and walking distance to Stockton Heath. The property is well presented throughout and is in 'Walk in Condition'. Internally there is an entrance hallway, with ground floor WC/cloakroom, leading into the L-shaped lounge with a feature bay window to the front, stairs to the first floor, and double-glazed doors into the dining kitchen. The kitchen is finished to an excellent standard and integrated appliances. To the rear, there is access to a good-sized enclosed lawned garden and side gate access. On the first floor, there are three bedrooms and a family bathroom. The property also offers two parking A stunning to the front.



Contact your local office to arrange a viewing:

Padgate: 01925 479334
Great Sankey: 01925 454300
Winwick: 01925 232146
Stockton Heath: 01925 453400
St.Helens: 01744 754120
Wigan: 01942 498862
Culcheth: 01925 764744
Ashton-In-Makerfield: 01942 364446
Newton-Le-Willows: 01925 907770
Commercial Office: 01925 907709
Lettings Head Office: 01925 873533
Financial Services: 01925 221234

Viewing Arrangements

Viewing is strictly by appointment only through Ashtons Estate Agency.

Disclaimer Property Details

These particulars, whilst being believed to be accurate are set out as a general outline only for guidance and do not constitute any part of an offer or contract. Intending purchasers should not rely on them as statements of representation of fact, but must satisfy themselves by inspection or otherwise as to their accuracy. We have not carried out a detailed survey nor tested the services, appliances and specific furnishings. The measurements given are approximate. No person in this firm's employment has the authority to make or give any representation or warranty in respect of the property.

All details, photographs and floorplans are the copyright of Ashtons Estate Agency.



How much you can borrow?
Speak to a mortgage expert in your local office.

Ashtons Financial Services

Ashtons.net rightmove

PrimeLocation.com Zoopla.co.uk

Ashtons