



GREGORY BROWN
RESIDENTIAL SALES & LETTINGS

OIEO £500,000 Freehold
FOR SALE

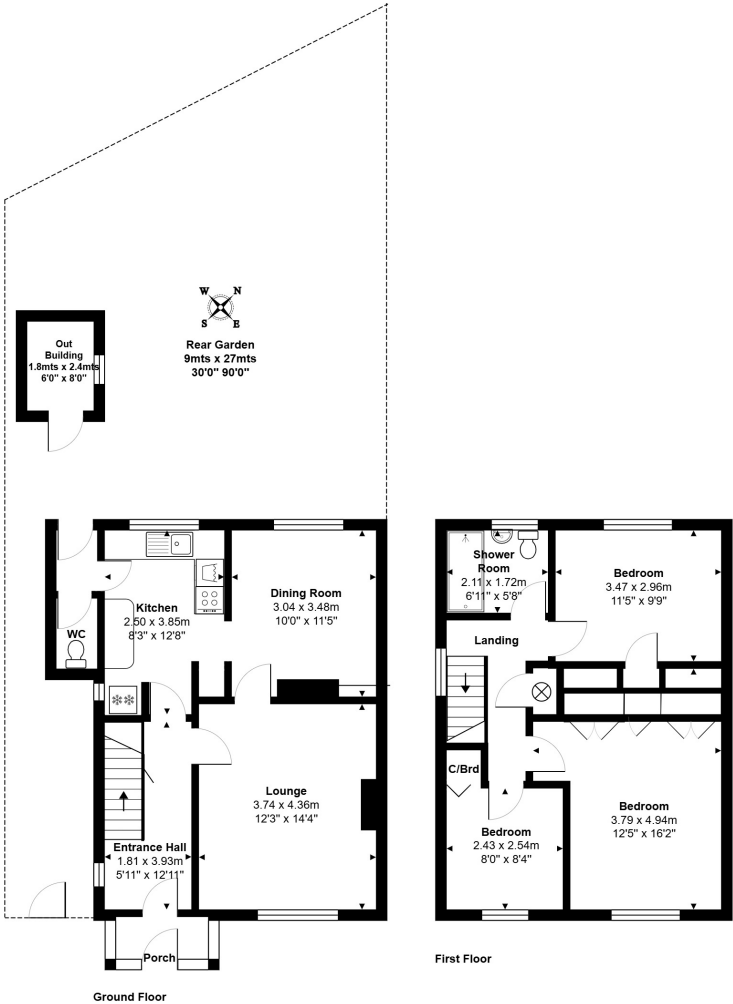


Brookside Avenue, Ashford, Surrey, TW15 3LZ

SPACIOUS THREE BEDROOM END-TERRACED PROPERTY OFFERING GREAT SCOPE FOR EXTENSION/IMPROVEMENT (S.T.R.P.P), SITUATED ALONG THIS SOUGHT AFTER ROAD IDEALLY LOCATED FOR EASY ACCESS TO TOWN CENTRE, LOCAL SHOPS, SCHOOLS & MOTORWAY NETWORKS. The property benefits from a spacious lounge, separate dining room, fitted kitchen, downstairs W.C, three well proportioned bedrooms, white shower room, large secluded rear garden and off-street parking. No Onward Chain. Viewings Highly Recommended!

ROOM DESCRIPTIONS

FLOORPLAN



Total Area: 98.4 m² ... 1059 ft²
All measurements are approximate and for display purposes only.