

2 Bedroom(s), Semi-Detached Bungalow, Freehold

Ravenfield Road, Armthorpe, Doncaster.



- 3D Virtual Tour Available
- Modern Open Plan Breakfast Kitchen and Lounge
- Converted Garage
- Rear Garden
- Popular Location in Armthorpe

- Well Presented Two Bedroom Semi Detached Bungalow
- Contemporary Family Bathroom
- Driveway
- Front Garden
- Local Amenities and Transport Links

£199,999
For Sale

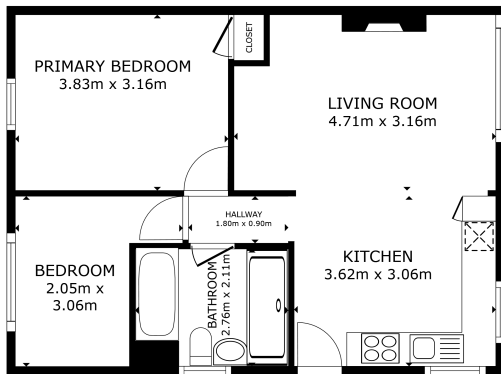
Book your viewing today Tel: 01302 247754

Owner's View

This stylish two bedroom modern bungalow offers comfortable contemporary living in a well-designed layout, ideal for downsizers. The property is complemented by a separate brick built unit, that includes two practical storage spaces perfect for hobbies or tools and adding to it's appeal is a beautiful presented garden room or office space, or for simply relaxing while enjoying the surrounding outdoor space. A unique versatile home ready to move in.

Ground Floor

Floor Plan



GROSS INTERNAL AREA
FLOOR PLAN 96.1 sq ft
TOTAL: 94.1 sq ft
SIZES AND EXPRESSIONS ARE APPROXIMATE, ACTUAL MAY VARY

Matterport

Open Plan Breakfast Kitchen and Lounge



Master Bedroom



Bedroom



Family Bathroom



Externals

Front Aspect



Rear Garden



Garage Room



Property Information

Council Tax Band - B

Utilities - Mains Gas, Mains Electricity, Mains Water

Water Meter - Yes

Tenure - Freehold

Solar Panels - No

Space Heating System - Gas Boiler with radiators

Approximate Heating System Installation Date - 8/20/2010

Water Heating System - Gas boiler (Combi)

Approximate Water Heating Installation Date - 11/26/2021

Boiler Location - Cupboard in main bedroom

Approximate Electrical System Installation Date -

Permanent Loft Ladder - Yes

Loft Insulation - Yes

Loft Boarded out – Yes

Whilst every effort is made to ensure that the information contained in these particulars is reliable, they do not constitute or form part of an offer or any contract. The Property Hive accept no liability for the accuracy of the contents, and therefore they should be independently verified by prospective buyers or tenants before agreeing an offer. All measurements provided are approximate and should be verified before exchange of contracts. No appliances, fixtures or fittings have been tested and should be checked by the buyer before exchange of contracts to ensure they are in good working order.

Energy Performance Certificate

