

£195,000  
Leasehold



**THOMAS CONNOLLY**

ESTATE AGENTS | LETTING AGENTS | NEW HOMES | PROPERTY MANAGEMENT



## Summary of Property

Thomas Connolly Estate Agents are delighted to offer for sale this one bedroom top floor apartment located in the popular Whitehouse development, offering close proximity to schooling and local parks.

The accommodation in brief comprises; entrance hall, a generous open-plan kitchen, dining and living area with a balcony. The kitchen boasts a built-in oven, hob and cooker hood, along with a choice of stylish fitted units, work surfaces and up stands. There is one spacious double bedroom in this property, a contemporary bathroom located off the hallway and outside there is a designated parking space for one car.

Ground rent and service charge is £100pcm with 245 years left on the lease.

Please contact us for further information or to confirm your viewing appointment.

# Room Descriptions

## Top Floor Apartment

Entrance Hall

Two Storage Cupboards

Lounge/Diner

15' 5" x 13' 2" (4.70m x 4.01m)

Kitchen

8' 6" x 7' 7" (2.59m x 2.31m)

Bedroom

10' 6" x 13' 2" (3.20m x 4.01m)

Bathroom

Outside

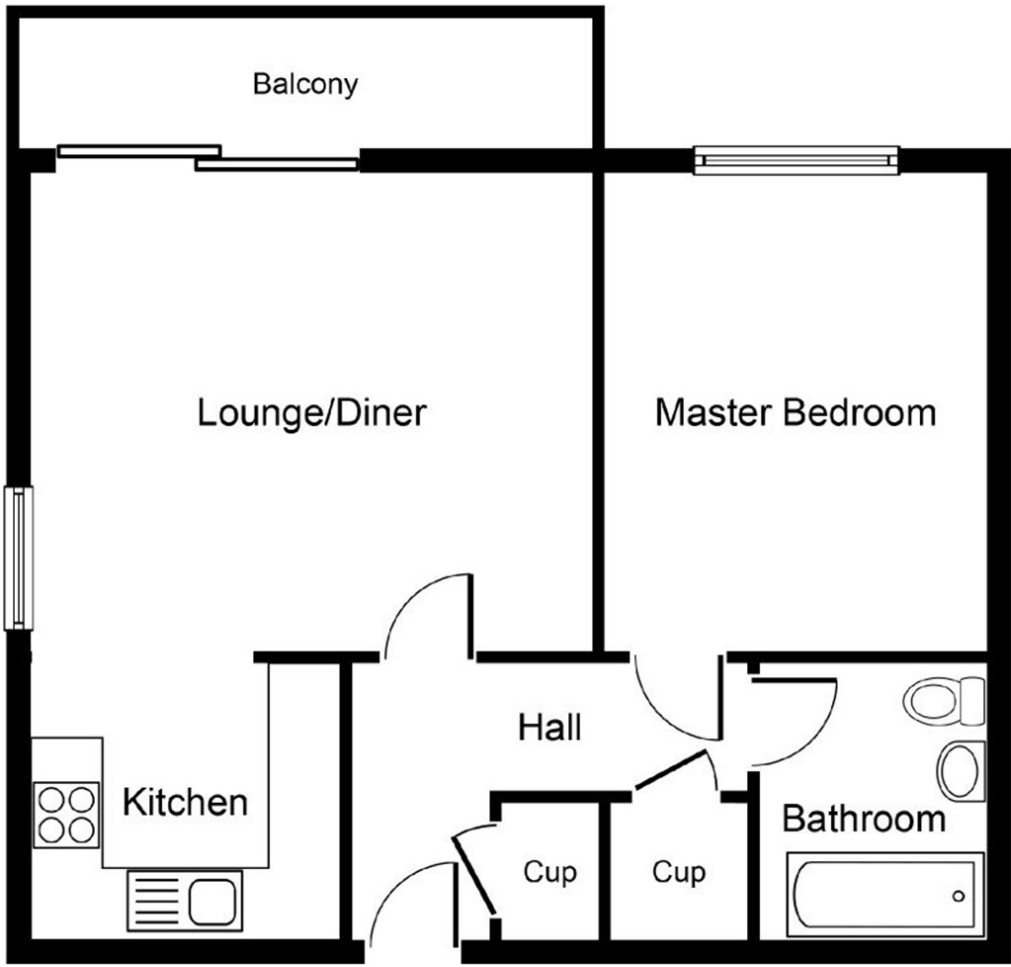
Allocated Parking Space

### PLEASE NOTE:

These property particulars do not constitute part or all of an offer or contract. All measurements are stated for guidance purposes only and may be incorrect. Details of any contents mentioned are supplied for guidance only and must also be considered as potentially incorrect. Thomas Connolly Estate Agents advise perspective buyers to recheck all measurements prior to committing to any expense. We confirm we have not tested any apparatus, equipment, fixtures, fittings or services and it is within the prospective buyer's interests to check the working condition of any appliances prior to exchange of contracts. Thomas Connolly Estate Agents has not sought to verify the legal title of the property and the buyers must obtain verification from their solicitor.



**THOMAS CONNOLLY**  
ESTATE AGENTS | LETTING AGENTS | NEW HOMES | PROPERTY MANAGEMENT



**Ground Floor**

Whilst every attempt has been made to ensure the accuracy of the floor plan contained here, measurements of doors, windows, rooms and any other items are approximate and no responsibility is taken for any error, omission, or mis-statement. This plan is for illustrative purposes only and should be used as such by any prospective purchaser or tenant. The services, systems and appliances shown have not been tested and no guarantee as to their operability or efficiency can be given.