



**67 TRUESDALE GARDENS, LANGTOFT  
PE6 9QQ**

**£385,000**

**FREEHOLD**



Briggs Residential  
17 Market Place  
Market Deeping  
PE6 8EA

**01778  
349300**

**briggsresidential.co.uk**





Situated in a small exclusive cul-de-sac, this extended, detached family home has three reception rooms, including a lounge with wood-burning stove, whilst to the first floor there are four good size bedrooms including a 22' bedroom with living area and a master bedroom with a range of bespoke fitted wardrobes. With field views from the main bedroom, this impressive family home also has a modern bathroom and en-suite and viewing is highly advised to appreciate it's superb location.

Entrance porch with engineered oak flooring and glass door leading through to

**HALLWAY**  
With stairs leading to first floor, under-stairs cupboard, engineered oak flooring and door to

**LOUNGE** 16'9 x 11' (excluding bay window) (5.10m x 3.36m)  
Fitted with a wood-burning stove in modern surround, engineered oak flooring and window to front elevation.

**KITCHEN/DINER** 20'8 x 9'9 (6.29m x 2.98m)  
Fitted with a range of wall and base units, built-in electric oven and gas hob, space for fridge/freezer, plumbing for dishwasher, window to rear elevation and opening to

**FAMILY ROOM** 12' x 12' (3.65m x 3.65m)  
With living-flame effect gas stove, tiled flooring, window to rear elevation and double doors opening onto the rear garden.

**UTILITY ROOM**  
With fitted base units and plumbing for washing machine, window to side elevation, door to garden and door to

**CLOAKROOM**  
Refitted with a modern two piece suite comprising vanity wash-hand basin, WC, heated towel rail and window to side elevation.

**LANDING**  
With airing cupboard and doors to

**BEDROOM ONE** 14' x 13'9 (4.28m x 4.20m)  
Fitted with a range of bespoke, quality, contemporary wardrobes, radiator, window to front elevation enjoying views over fields and door to

**LUXURY EN-SUITE**  
Fitted with a modern three piece suite comprising vanity wash-hand basin, shower enclosure with glass screen, WC, heated towel rail and window to side elevation.

**BEDROOM TWO** 22'11 x 11'10 (6.98m x 3.61m)  
Extended to create an extremely generous second bedroom with radiators and windows to side and rear elevations, this room offers potential for the addition of a second en-suite.

**BEDROOM THREE** 12'11 x 8'8 (3.94m x 2.64m)  
With built-in double wardrobe, radiator and window to front elevation.

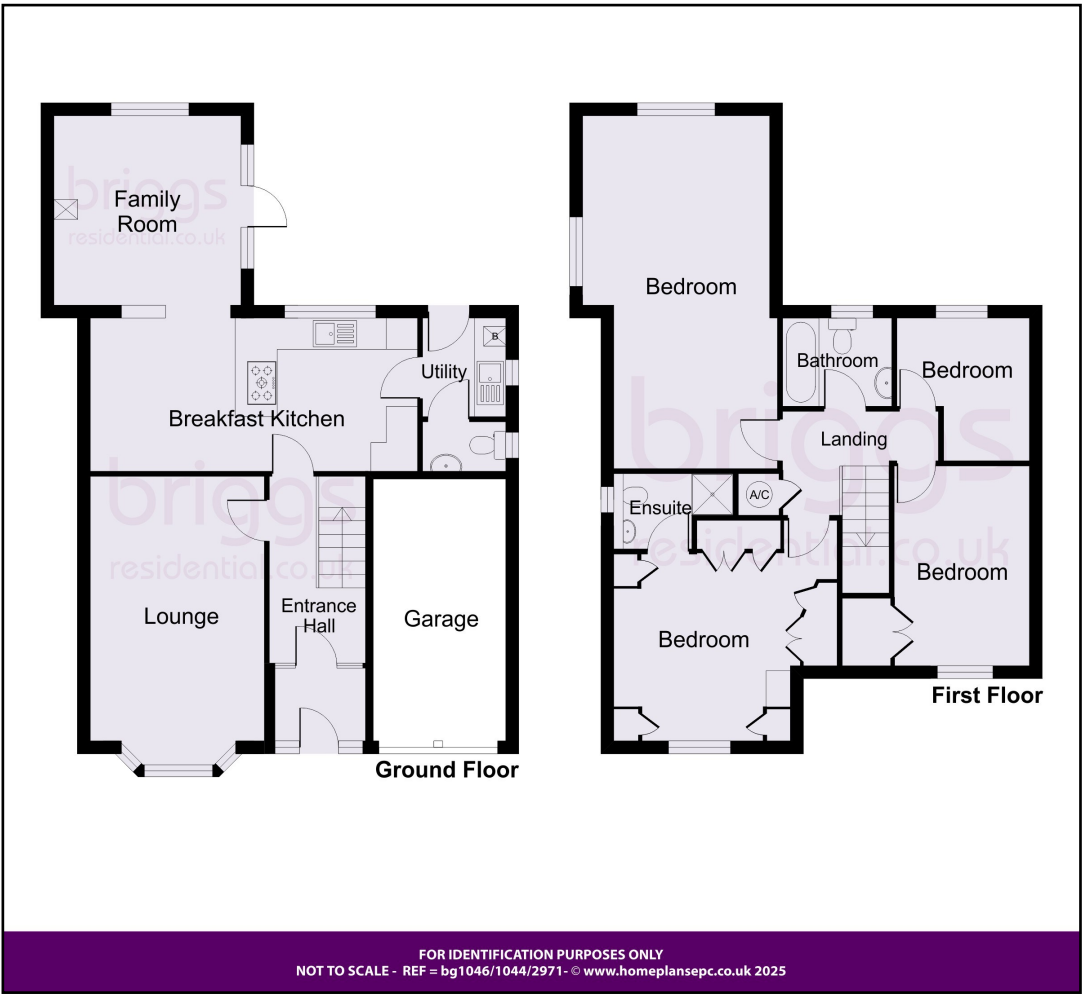
**BEDROOM FOUR** 9'1 x 8'4 (2.76m x 2.53m)  
With radiator and window to rear elevation.

**FAMILY BATHROOM**  
Re-fitted with a modern three piece suite comprising vanity wash-hand basin, double walk-in shower enclosure, WC, heated towel rail and window to rear elevation.

**OUTSIDE**  
The property is set in a delightful position at the end of a cul-de-sac with block-paved driveway to the front providing ample parking leading to an integral single garage.

The good size rear garden is mainly laid to lawn with a paved patio seating area leading off from the Family Room, mature planted borders and gated access to one side of the property with the opposite side providing an area of hardstanding with space for a shed.

EPC RATING: C COUNCIL TAX BAND: D (SKDC)



These particulars do not constitute part or all of an offer or contract. The measurements and details are supplied for guidance only and as such must be considered incorrect. Potential buyers are advised to recheck the measurements before committing to any expense. Briggs Residential have not tested any apparatus, equipment, services, fixtures or fittings and it is in the buyers interest to check the working condition of appliances. Briggs Residential have not sought to verify the legal title or structure of the property and suggest buyers obtain such verification from their solicitors.