





An exceptional, extended semi-detached family home with 577ft² self contained annex.

- Extended Semi-Detached Home
- Detached 577ft² Self Contained Annex
- Large Living Room & Kitchen
- Snug, Utility Room & WC
- Four Bedrooms
- Two Bath/Shower Rooms
- Large Gardens
- Parking for Several Cars

Description

An exceptional, extended semi-detached family home, located in a quiet back-water close to excellent amenities and with the unique feature of a detached, one bedroom self contained annex, which is located at the bottom of the garden. The property itself is presented to a high standard and features a large open plan living room and kitchen to the rear and a cosy snug to the front. There is also an entrance hall, cloakroom and utility room on the ground floor and four bedrooms, en-suite shower room and large bathroom on the first floor. The annex features and large living room and kitchen, double bedroom and shower room. There is a large rear garden and there is parking for several cars to the front.



Location

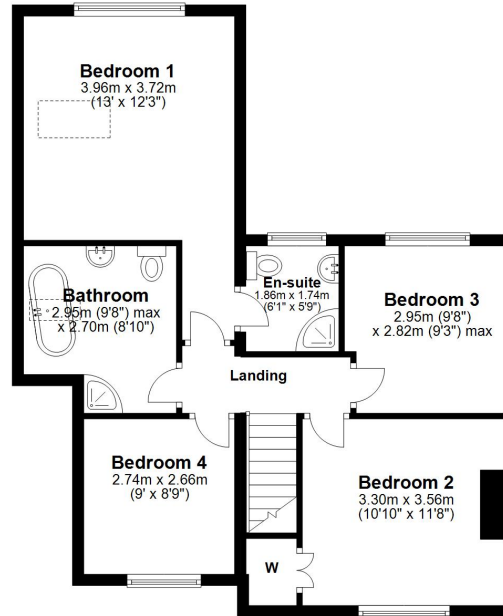
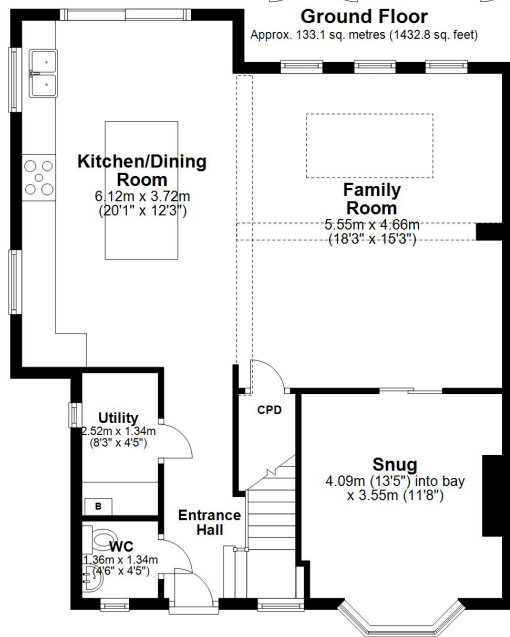
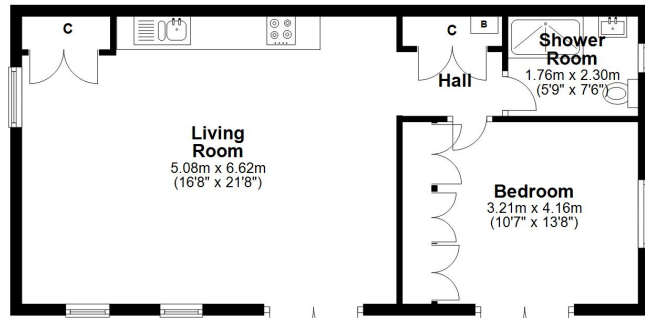
Local amenities are well catered for with the shops on Chester Road, Castle which offer everything you could want or need. Two railway stations serve the area with the West Coast Main Line service running through Hartford, enabling access to London within two hours. Trains to Manchester and Chester run from Greenbank station. The A556 and A49 easily facilitate access to the region's major road network with Manchester and Liverpool airports both within 20 miles. Above all, where the area really excels is its range of excellent schools. The well regarded Grange private school is less than a mile away and both Hartford High and St Nicholas Catholic High School are within walking distance as are the four village primary schools; Hartford Primary School, St Wilfrid's Catholic Primary School, Hartford Manor Community School and the private Grange primary School. Nearby Northwich caters for a more comprehensive range of amenities, including leading supermarkets with Waitrose, Sainsbury's and Tesco all represented.

Tenure

FREEHOLD

EPC Rating:





Total area: approx. 196.1 sq. metres (2110.5 sq. feet)



Williams Estates is the trading name of Williams Estates (Ltd). Registered address 33, The Green, Hartford, Northwich, Cheshire, CW8 1QA.
Reg number 07682683. Director Andrew P Williams



These particulars, whilst believed to be accurate are set out as a general outline only for guidance and do not constitute any part of an offer or contract. Intending purchasers should not rely on them as statements of representation of fact, but must satisfy themselves by inspection or otherwise as to their accuracy. All measurements quoted are approximate. We are unable to confirm the working order of any fixtures and fittings including appliances that are included in these particulars. No person in this firm's employment has the authority to make or give any representation or warranty in respect of the property.