





142 Clare Road, Staines-upon-Thames, Surrey TW19 7EG
£295,000 - Leasehold



PROPERTY DESCRIPTION

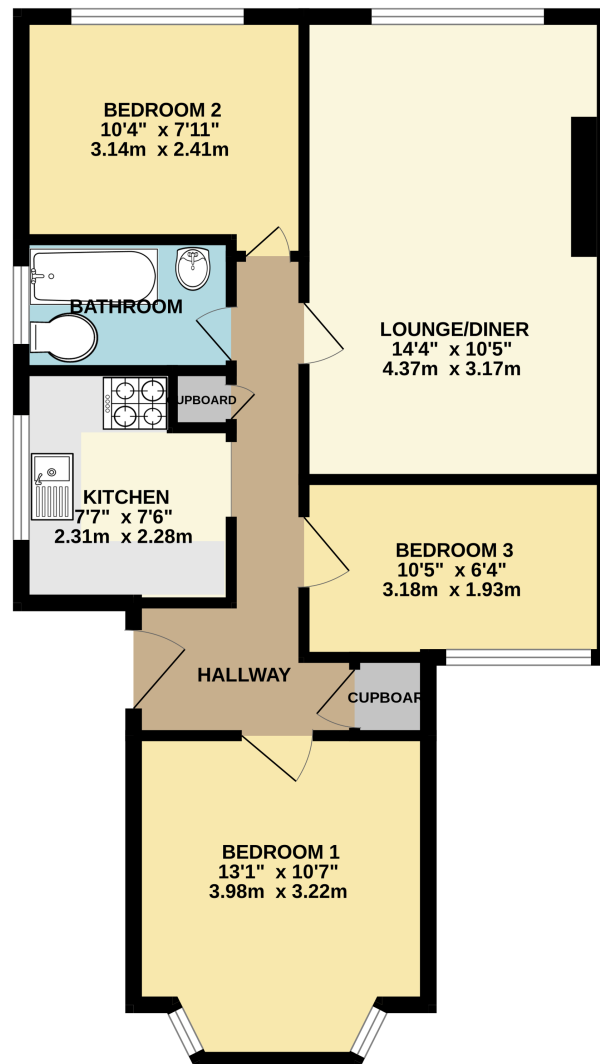
A spacious three-bedroom first-floor maisonette located on the popular Clare Road in Staines, offered to the market with no onward chain. This well-proportioned property features a generous living room, separate kitchen, three good-sized bedrooms, and a family bathroom. A standout feature is the large private rear garden, ideal for outdoor entertaining or family use. With its own private entrance and plenty of natural light throughout, this home offers a great opportunity for first-time buyers or investors. Conveniently located close to local schools, shops, parks, and transport links, early viewing is highly recommended.

POINTS OF INTEREST

- NO ONWARD CHAIN
- LONG LEASE
- LOW MONTHLY COSTS
- PRIVATE GARDEN
- THREE GOOD SIZE BEDROOMS
- CLOSE TO LOCAL SCHOOLS
- CLOSE TO LOCAL PARKS
- FIRST FLOOR MAISONETTE



FIRST FLOOR
605 sq.ft. (56.2 sq.m.) approx.



TOTAL FLOOR AREA : 605 sq.ft. (56.2 sq.m.) approx.

Whilst every attempt has been made to ensure the accuracy of the floorplan contained here, measurements of doors, windows, rooms and any other items are approximate and no responsibility is taken for any error, omission or mis-statement. This plan is for illustrative purposes only and should be used as such by any prospective purchaser. The services, systems and appliances shown have not been tested and no guarantee as to their operability or efficiency can be given.

Made with Metropix ©2025

