

THE HOMEND

£169,950

Key Features



Set in the heart of
Ledbury town
centre.



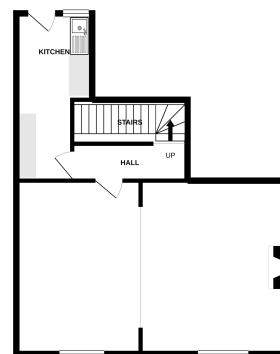
A recently
refurbished,
spacious, two storey
flat.



Two Double
Bedrooms.



GROUND FLOOR
572 sq.ft. (53.2 sq.m.) approx.



1ST FLOOR
527 sq.ft. (49.0 sq.m.) approx.



TOTAL FLOOR AREA: 1099 sq.ft. (102.1 sq.m.) approx.
Made with Merge ©2020