

THOMAS CONNOLLY

ESTATE AGENTS | LETTING AGENTS | NEW HOMES | PROPERTY MANAGEMENT

136 North Tenth Street, Milton Keynes, Buckinghamshire. MK9
3AY

£110,000 Leasehold

FOR SALE



PROPERTY DESCRIPTION

Thomas Connolly Estate Agents are delighted to present this studio apartment in the popular location of Central Milton Keynes offering numerous amenities including shops and traffic links.

Accommodation briefly comprises; entrance hall, kitchen, sitting room, Bedroom, and a bathroom. To the front there is parking. The property further benefits from double glazing, and is offered for sale with no upper chain.

Please contact Thomas Connolly Estate Agents for further information relating to this property or to confirm viewing arrangements.

If you are thinking of buying, selling, renting or require mortgage advice, please do not hesitate to contact us to see how we can help you.

FEATURES

- RE FITTED KITCHEN
- TOP FLOOR
- RE FITTED BATHROOM
- NO CHAIN
- STUDIO APARTMENT



ROOM DESCRIPTIONS

TOP FLOOR

KITCHEN

8' 1" x 8' 6" (2.46m x 2.59m)

SITIING ROOM / BEDROOM

14' 8" x 11' 2" (4.47m x 3.40m)

BATHROOM

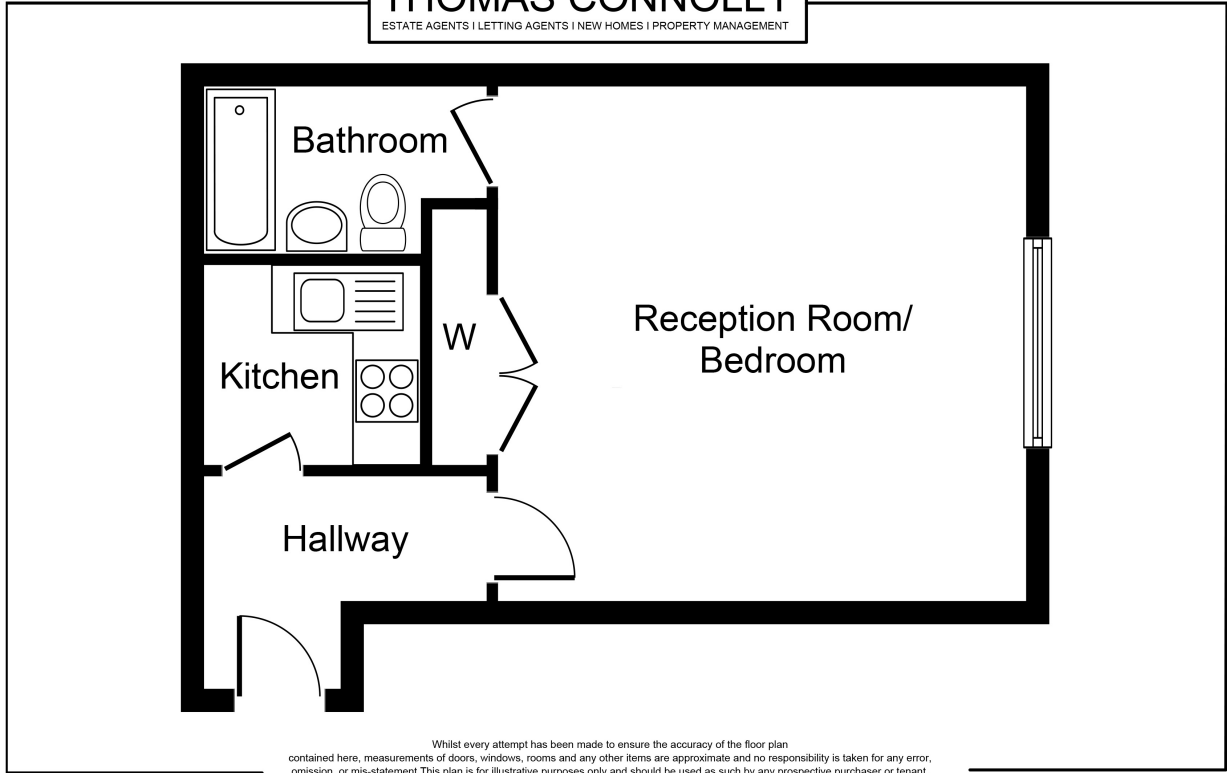
PLEASE NOTE

These property particulars do not constitute part or all of an offer or contract. All measurements are stated for guidance purposes only and may be incorrect. Details of any contents mentioned are supplied for guidance only and must also be considered as potentially incorrect. Thomas Connolly Estate Agents advise perspective buyers to recheck all measurements prior to committing to any expense. We confirm we have not tested any apparatus, equipment, fixtures, fittings or services and it is within the prospective buyers interests to check the working condition of any appliances prior to exchange of contracts. Thomas Connolly Estate Agents has not sought to verify the legal title of the property and the buyers must obtain verification from their solicitor



FLOORPLAN

THOMAS CONNOLLY
ESTATE AGENTS | LETTING AGENTS | NEW HOMES | PROPERTY MANAGEMENT



Whilst every attempt has been made to ensure the accuracy of the floor plan contained here, measurements of doors, windows, rooms and any other items are approximate and no responsibility is taken for any error, omission, or mis-statement. This plan is for illustrative purposes only and should be used as such by any prospective purchaser or tenant. The services, systems and appliances shown have not been tested and no guarantee as to their operability or efficiency can be given.
Copyright V360 Ltd 2024 | www.houseviz.com