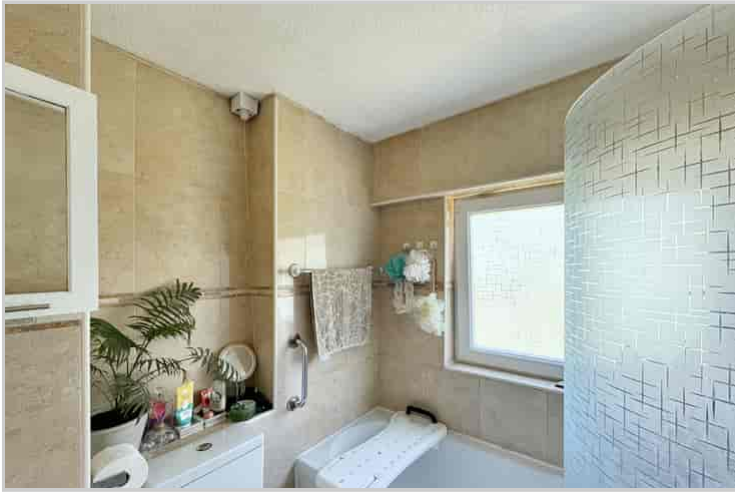


90 Sparrow Drive, Orpington, Kent, BR5 1RZ

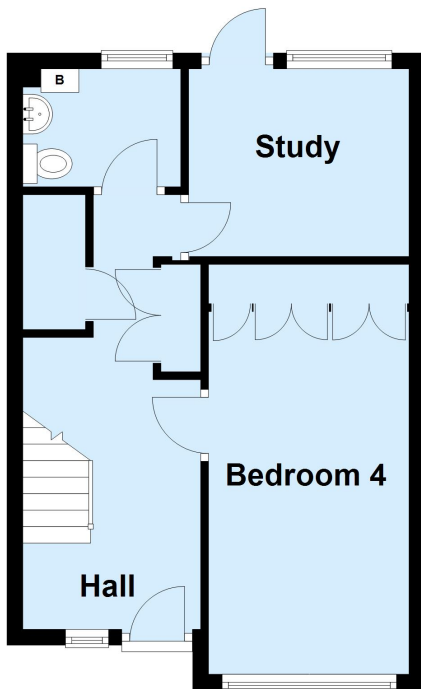
Property Images





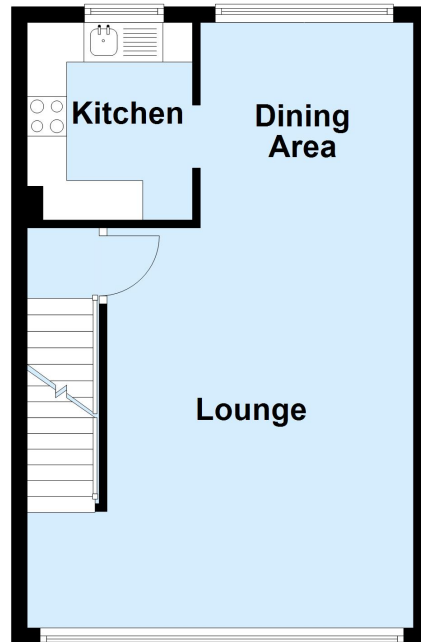
Ground Floor

Approx. 36.2 sq. metres (389.5 sq. feet)



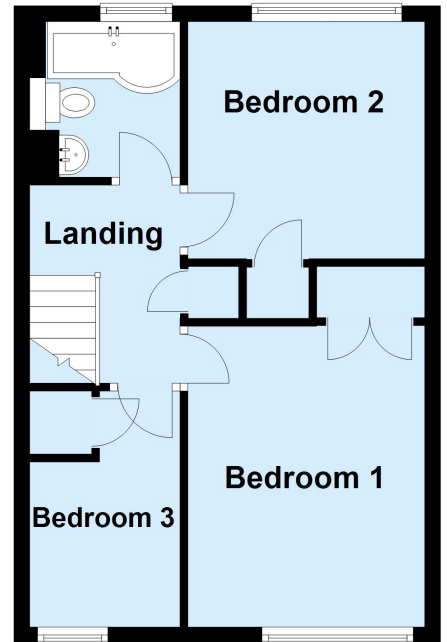
First Floor

Approx. 37.5 sq. metres (403.9 sq. feet)



Second Floor

Approx. 38.4 sq. metres (413.0 sq. feet)



Total area: approx. 112.1 sq. metres (1206.3 sq. feet)

This plan is for general layout guidance and may not be to scale.
Plan produced using PlanUp.