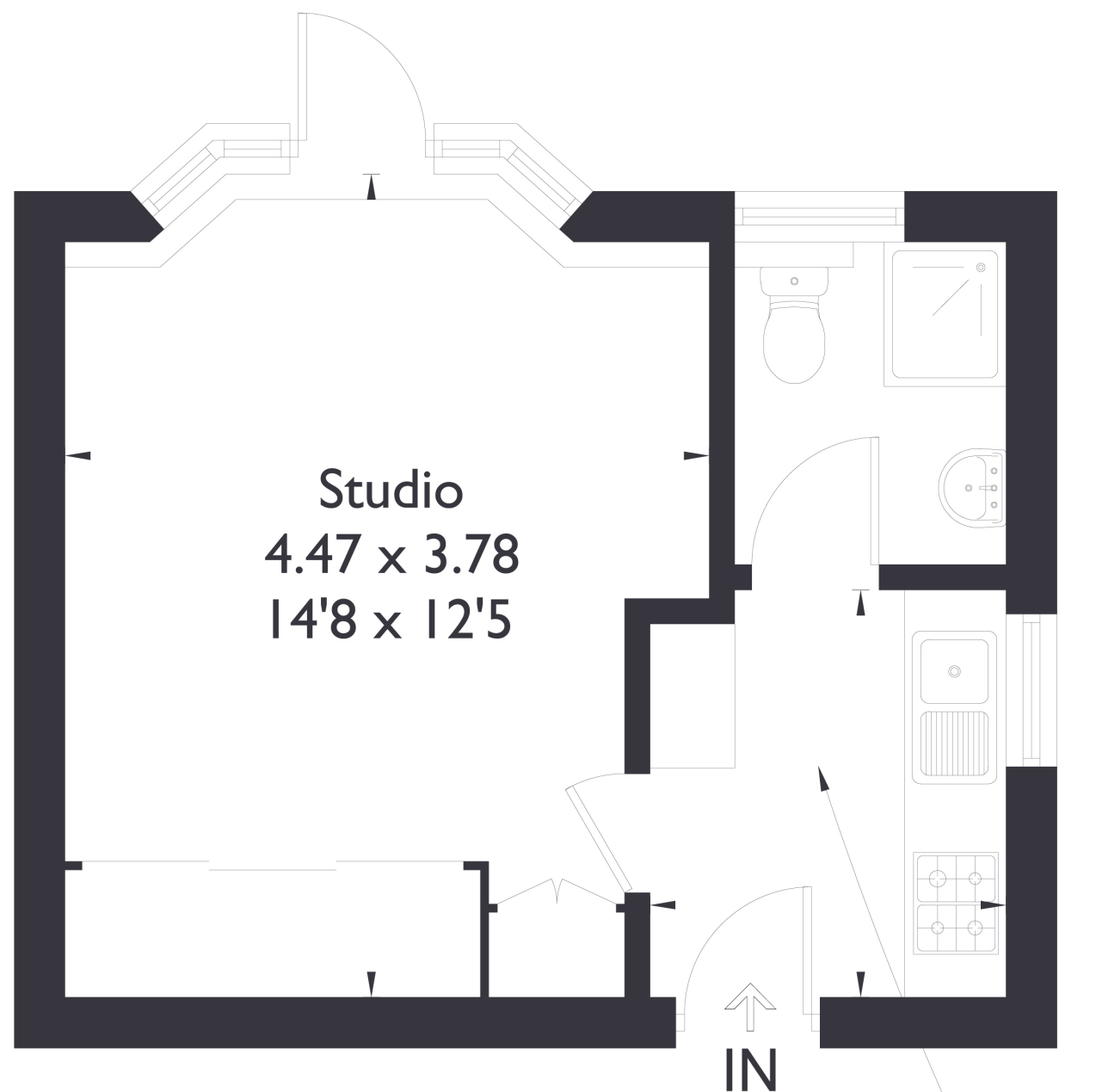


## Hastings Road, W13

Approximate Floor Area = 25.7 sq m / 277 sq ft



## Ground Floor

**Kitchen**  
2.42 x 2.10  
7'11 x 6'11



### STUDIO FLAT

## Hastings Road, W13

£230,000

Welcome to this fantastic ground floor studio apartment, ideally located in the heart of West Ealing.

The property features a well-appointed kitchen as you enter, with the bathroom located to the rear and the bright studio room to your left.

### FEATURES

- Studio Flat
- Ground Floor Flat
- Large Open Room
- One Bathroom
- Private Entrance to Communal Grounds
- West Ealing Station (Elizabeth Line)
- EPC Rating D



STUDIO FLAT

# Hastings Road, W13

## £230,000

Perfectly positioned, it's just a 10-minute walk to West Ealing Station, offering direct access to the Elizabeth Line, making commuting into the City quick and convenient.

This studio also presents a fantastic rental investment opportunity, thanks to its proximity to key transport links and being just a 15-minute walk from Ealing Broadway, where you'll find an array of restaurants, bars, and shopping options.

EPC Rating D.

