

Devonshire Business Centre
Works Road
Letchworth Garden City
SG6 1GJ



Tel: 01462 419329
info@leysbrook.co.uk | www.leysbrook.co.uk



Broadwater Dale, Letchworth Garden City, Hertfordshire, SG6

£1,600 pcm

- Available NOW - unfurnished
- Three Double bedrooms
- Fitted kitchen with appliances
- Large living room with doors leading to the conservatory
- Downstairs toilet - ideal for busy young families
- Driveway and GARAGE with electric door and fob
- Quiet residential Road in a sought after location
- Within a MILE of several good or outstanding rated primary and senior schools
- HALF A MILE from Letchworth town centre and MAINLINE STATION
- Great road links - short drive to A1(M) and A507





Available NOW | Looking for a FAMILY HOME? | SCHOOLS important? | THREE Bedrooms | Large Lounge / Diner | Fitted kitchen with appliances| MODERN bathroom suite | Garage and driveway providing off road parking | Just half a mile walk (12 mins) to Letchworth train station

Inside, this great size FAMILY home has a large living room with doors to the conservatory, a fitted kitchen with appliances, there is also a downstairs cloakroom, upstairs there are two double bedrooms and a large single which are served by a modern three piece bathroom suite. Situated in a much sought after area, close to superb transport links to LONDON and North, the town centre and several highly regarded schools.

Just half a mile to Letchworth MAINLINE STATION and the town centre and offering spacious accommodation this property really does tick a lot of boxes and must be seen to be fully appreciated.

Call TODAY to book your viewing and buy before someone else does!

| ADDITIONAL INFORMATION

Availability: Now

Deposit: £1,846.00

Pets: Sorry, Pets NOT allowed

Council Tax Band: C

EPC Rating: TBC

| GROUND FLOOR:

Living Room: Approx 18' 5" x 16' 0" MAX (5.61m x 4.88m)

Kitchen: Approx 10' 5" x 7' 3" (3.17m x 2.21m)

Conservatory: Approx 9' 1" x 8' 3" (2.77m x 2.51m)

Downstairs cloakroom: Approx 10' 2" x 3' 10" (3.10m x 1.17m)

| FIRST FLOOR:

Bedroom One: Approx 13' 9" x 9' 9" (4.19m x 2.97m)

Bedroom Two: Approx 13' 3" x 7' 10" (4.04m x 2.39m)

Bedroom Three: Approx 10' 3" x 7' 9" (3.12m x 2.36m)

Bathroom: Approx 11' 0" x 5' 8" (3.35m x 1.73m)

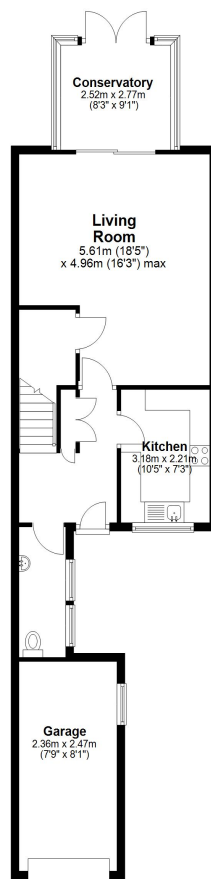
| OUTSIDE

Garage: Approx 16' 6" x 8' 8" (5.03m x 2.64m)

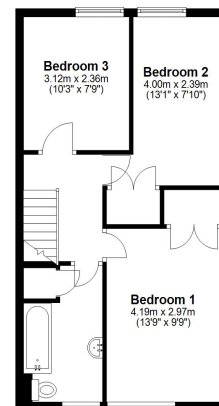
Driveway to the front



Ground Floor
Approx. 55.1 sq. metres (592.8 sq. feet)



First Floor
Approx. 45.2 sq. metres (487.0 sq. feet)



Total area: approx. 100.3 sq. metres (1079.8 sq. feet)