



## **Baltic Close, Colliers Wood, SW19 1BL**

**£1,750 PCM**

**2 Bedroom Flat to Let**



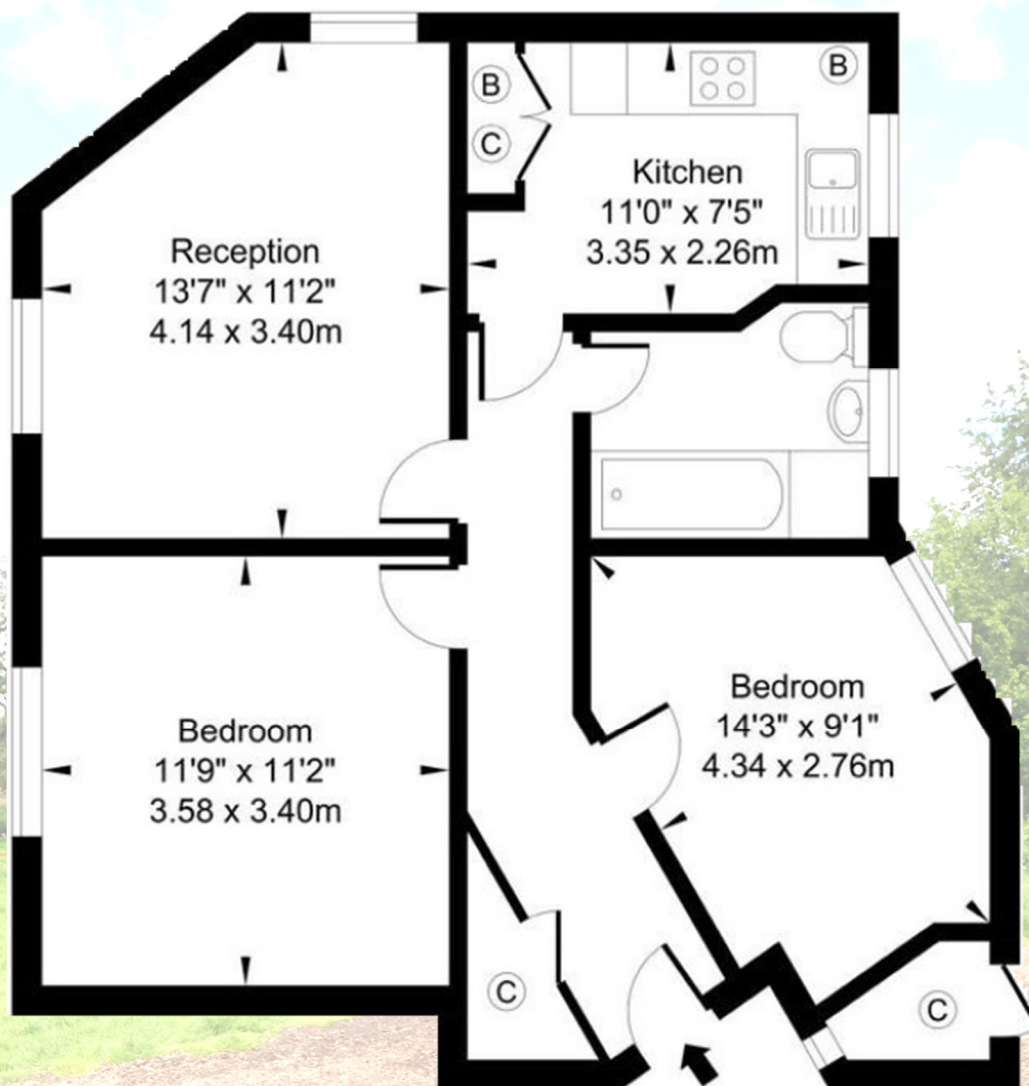


## PROPERTY DETAILS

- Top Floor (3rd) Apartment
- A Short Walk of Tube
- Overlooking Wandle Park
- 2 Good Sized Bedrooms
- Bright Reception Room
- Fully Fitted Kitchen
- Modern Bathroom
- Laminate Flooring
- EPC Rating = E







**THIRD FLOOR**  
**TOTAL APPROX. FLOOR AREA:**  
**57.72 SQ.M. / 621.29 SQ.FT.**

Cross & Prior endeavour to maintain accurate depictions of properties in Floor Plans and descriptions, however, these are intended only as a guide and purchasers must satisfy themselves by personal inspection.



*Established Since 1910*

## CONTACT

103 High Street, Colliers Wood,  
 London SW19 2JF

[enquiries@crossprior.co.uk](mailto:enquiries@crossprior.co.uk)  
[www.crossprior.co.uk](http://www.crossprior.co.uk)

**0208 715 0555**

## VIEWING ARRANGEMENTS

Strictly by appointment with  
 Cross & Prior

