

A substantial and impressive detached country residence with large multi purpose barn/workshop set in an extensive plot. Near Lampeter, West Wales



Penshiettyn, Silian, Lampeter, Ceredigion. SA48 8AU.

£500,000

REF: R/4048/LD Offers Over

*** OFFERS OVER £500,000 *** A substantial and impressive country residence *** Offering 4 bedrooomed, 2 bathroomed accommodation with high end Kitchen and Bathroom fixtures *** A multi purpose barn/workshop (measuring 80' x 30') with office space over *** Set in an extensive plot of approximately an acre overlooking the picturesque Village of Silian

*** Privately positioned with an extensive tarmacadamed driveway and yard area with ample parking and turning space *** Useful garage with inspection pit *** Low maintenance garden area with a lawn, patio and greenhouse *** Recent upgrade with mancave/studio

*** A home with great opportunities - Working from home/for light industrial use *** Are you seeking a home with business potential - Look no further *** A country property with endless possibilities



LAMPETER
12, Harford Square, Lampeter,
Ceredigion, SA48 7DT
Tel:01570 423623
lampeter@morgananddavies.co.uk



ABERAERON
4, Market Street, Aberaeron,
Ceredigion, SA46 0AS
Tel:01545 571 600
aberaeron@morgananddavies.co.uk



CARMARTHEN
11, Lammas St, Carmarthen,
Carmarthenshire, SA31 3AD
Tel:01267 493444
carmarthen@morgananddavies.co.uk

LOCATION

The property is positioned in rural surroundings on the outskirts of the popular Community of Silian, only 2 miles from the University Town of Lampeter, a 20 minute drive to the Ceredigion Heritage Coastline at Aberaeron and within easy travelling distance to the larger Towns and Employment Centres of Aberystwyth and Carmarthen.

GENERAL DESCRIPTION



A substantial and impressive country residence. The property is set within an approximately 1 acre plot and benefits from an impressive 4 bedroomed, 2 bathroomed residence with high end modern fixtures and fittings.

To the side of the property lies the large multi purpose barn that has had many uses over the years and could offer itself nicely for light industrial use, such as a workshop, storage, mechanics, etc.

The property enjoys breath taking views over the picturesque Village of Silian and enjoys an approach leading down to the tarmacadamed yard and parking area.

To the rear of the property lies the low maintenance lawned garden area and the new addition of the mancave/studio.

In all an impressive Family home with fantastic home working capabilities. It enjoys the use of Fibre Broadband, oil fired central heating and double glazing.

THE ACCOMMODATION

The accommodation at present offers more particularly the following.

RECEPTION HALL

Accessed via a UPVC front entrance door, staircase to the first floor accommodation.

OFFICE/SITTING ROOM

15' 3" x 8' 3" (4.65m x 2.51m). With radiator.



LIVING ROOM

16' 1" x 14' 2" (4.90m x 4.32m). With wall mounted electric fire and radiator.



UTILITY ROOM

13' 0" x 9' 8" (3.96m x 2.95m). With Oak fitted floor units with work surfaces over, sink and drainer unit with mixer tap, plumbing and space for automatic washing machine and tumble dryer, UPVC rear entrance door.



SHOWER ROOM

13' 0" x 14' 8" (3.96m x 4.47m). With low level flush w.c., pedestal wash hand basin, shower cubicle, radiator and extractor fan.

KITCHEN

19' 3" x 13' 0" (5.87m x 3.96m). An Oak fitted Kitchen with an extensive range of wall and floor units with breakfast bar and dresser style unit with Welsh Granite work surfaces over, sunken 1 1/2 sink and drainer unit with a mixer tap, Belling electric cooker stove with extractor hood over, space for American fridge/freezer, tiled flooring, double aspect windows, radiator, boiler cupboard housing the Worcester oil fired central heating boiler.



KITCHEN (SECOND IMAGE)



FIRST FLOOR

GALLERIED LANDING

With access to the loft space.



REAR BEDROOM 4

14' 2" x 13' 0" (4.32m x 3.96m). With double aspect windows and radiator.



FAMILY BATHROOM

A modern 3 piece suite comprising of a panelled bath with shower attachment, low level flush w.c., hanging vanity unit with wash hand basin, double sided airing cupboard with hot water cylinder and immersion, extractor fan.



REAR BEDROOM 3

13' 4" x 10' 7" (4.06m x 3.23m). With radiator.



FRONT BEDROOM 2

16' 7" x 10' 7" (5.05m x 3.23m). With radiator.



FRONT BEDROOM 1

16' 1" x 12' 0" (4.90m x 3.66m). With double aspect windows and radiator.



'HIS AND HERS' WALK-IN WARDROBE

Offering potential as an En-Suite.

EXTERNALLY

BAR/STUDIO

20' 0" x 14' 0" (6.10m x 4.27m). With UPVC sliding door, electricity connected. Bespoke bar and fittings available by separate negotiation.



LEAN-TO GARDEN STORE

LEAN-TO GREENHOUSE

PLANT ROOM

With the private borehole water system.

OUTSIDE W.C.

Being block built with w.c. and wash hand basin.

GARAGE/WORKSHOP

30' 0" x 15' 0" (9.14m x 4.57m). With inspection pit and fitted work bench, double steel door entrance, electricity connected.



MULTI PURPOSE BARN

80' 0" x 30' 0" (24.38m x 9.14m). Of steel framed construction. Suiting a range of uses for light commercial use or for those wanting to run a business from home.



LOFT OVER

With two offices with openings overlooking the barn.

PARKING AND DRIVEWAY

A gated and extensive tarmacadamed driveway with good access onto all outbuildings and onto the main residence. It also offers extensive parking and turning space.



GARDEN

A low maintenance walled rear garden laid to lawn with various patio and outdoor dining areas.

VIEWS

Enjoying picturesque rural views over Silian and the surrounding countryside.

FRONT OF PROPERTY



REAR OF PROPERTY



AGENT'S COMMENTS

The perfect Family home with great business capabilities. Rurally positioned near Lampeter.

TENURE AND POSSESSION

We are informed the property is of Freehold Tenure and will be vacant on completion.

COUNCIL TAX

The property is listed under the Local Authority of Ceredigion County Council. Council Tax Band for the property - 'E'.

MONEY LAUNDERING REGULATIONS

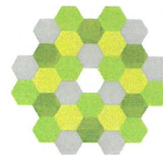
The successful Purchaser will be required to produce adequate identification to prove their identity within the terms of the Money Laundering Regulations. Appropriate examples include Passport/Photo Driving Licence and a recent Utility Bill. Proof of funds will also be required or mortgage in principle papers if a mortgage is required.

Services

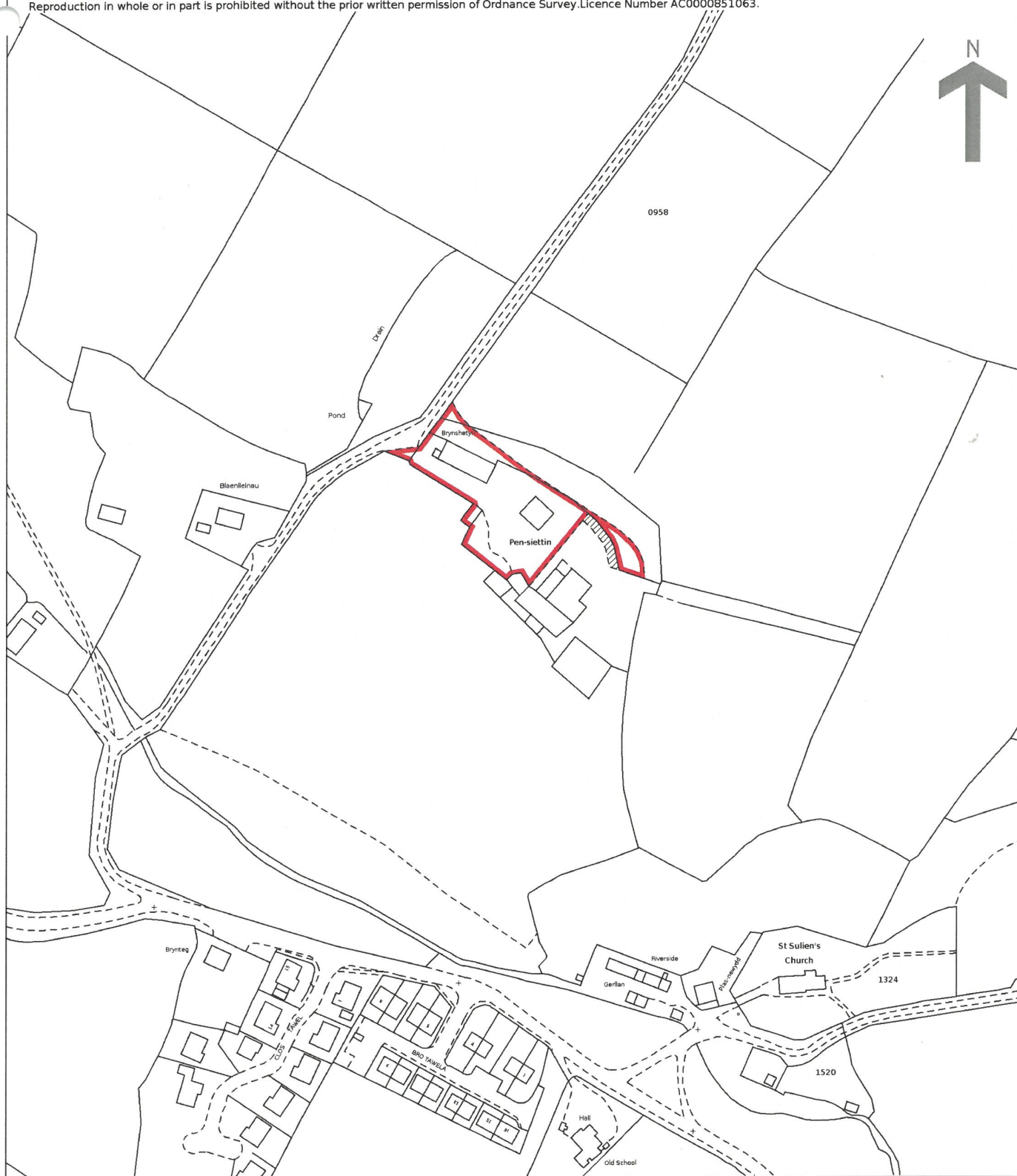
We are informed by the current Vendors that the property benefits from private water, mains electricity, private drainage, oil fired central heating, double glazing, telephone subject to B.T. transfer regulations, Fibre Broadband subject to confirmation by your Provider. CCTV system available by separate negotiation.

HM Land Registry
Official copy of
title plan

Title number **CYM98275**
Ordnance Survey map reference **SN5751SW**
Scale **1:2500**
Administrative area **Ceredigion / Ceredigion**



©Crown Copyright. Produced by HM Land Registry.
Reproduction in whole or in part is prohibited without the prior written permission of Ordnance Survey. Licence Number AC0000851063.



Council Tax: Band E

N/A

Parking Types: Driveway.

Heating Sources: Oil.

Electricity Supply: Mains Supply.

Water Supply: Private Supply.

Sewerage: Private Supply.

Broadband Connection Types: FTTP.

Accessibility Types: None.

EPC Rating: C (75)

Has the property been flooded in last 5 years? No

Flooding Sources:

Any flood defences at the property? No

Any risk of coastal erosion? No

Is the property listed? No

Are there any restrictions associated with the property? No

Any easements, servitudes, or wayleaves?
No

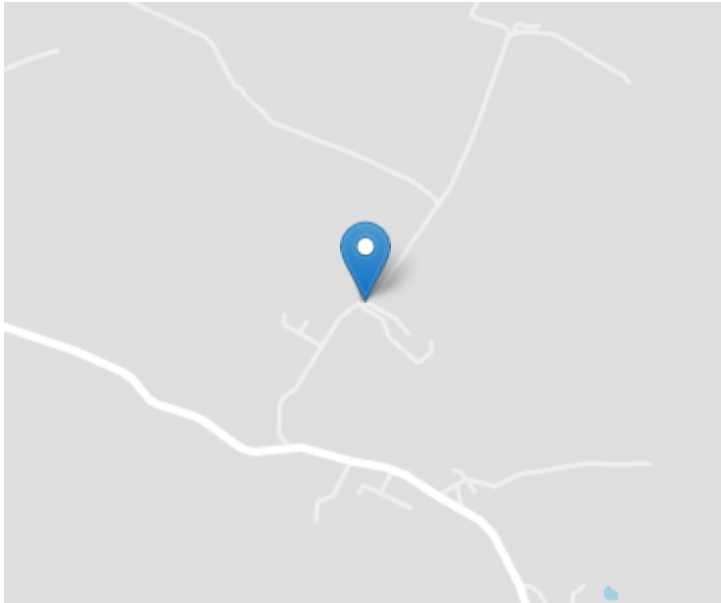
The existence of any public or private right of way? No

Mobile Signal

?

Construction Type

Traditional



Directions


From Lampeter take the A485 Tregaron road. Continue out of Town for approximately 1 mile until arriving at the sharp right hand bend. Turn left at the bend signposted Silian. Continue for approximately 0.5 of a mile until arriving at Silian. Continue through the Hamlet and on passing Bro Tawela and Clos Tawela on your left hand side take the next right hand turning and continue on this road for 0.5 of a mile. Penshiettyn will be the third on your right hand side.

VIEWING: Strictly by prior appointment only. Please contact our Lampeter Office on 01570 423 623 or lampeter@morgananddavies.co.uk

All properties are available to view on our Website – www.morgananddavies.co.uk. Also on our FACEBOOK Page - www.facebook.com/morgananddavies. Please 'LIKE' our FACEBOOK Page for new listings, updates, property news and 'Chat to Us'.

To keep up to date please visit our Website, Facebook and Instagram Pages

Energy Efficiency Rating

	Current	Potential
Very energy efficient - lower running costs		
(92+) A		
(81-91) B		85
(69-80) C	75	
(55-68) D		
(39-54) E		
(21-38) F		
(1-20) G		
Not energy efficient - higher running costs		
England, Scotland & Wales	EU Directive 2002/91/EC 	

For further information or to arrange a viewing on this property please contact :

Lampeter Office
12 Harford Square
Lampeter
Ceredigion
SA48 7DT

T: 01570 423623

E: lampeter@morgananddavies.co.uk

<http://www.morgananddavies.co.uk>



Regulated by

RICS