

# Dean

Shepton Mallet, BA4 4RZ

COOPER  
AND  
TANNER



**£245,000 Freehold**

A charming converted barn in a courtyard setting that offers versatile accommodation suited to a variety of requirements.

# Dean Shepton Mallet BA4 4RZ

 2  2  2 EPC D

## £245,000 Freehold

### DESCRIPTION

A charming converted barn in a courtyard setting that offers versatile accommodation suited to a variety of requirements.

The Tallett forms part of the courtyard of traditional barns that was formerly part of Dean Street Farm, all of which have been converted to provide a lovely complex of homes arranged around a central communal garden area. The conversion was completed sympathetically with oak doors and stair case and exposed woodwork retained where possible

The front door opens directly into an open plan kitchen and sitting room with a range of fitted wall and base units, built in storage and stairs rising to the first floor. A door leads to an inner hall which in turn has doors opening to the utility room/downstairs cloakroom and a second ground floor room which would make a lovely sitting room or second bedroom with French doors opening directly onto the rear garden.

On the first floor there is a large double bedroom with lovely exposed A-frame beams and Velux windows together with an ensuite bathroom which also has a door directly from the landing. There is also a store room on this floor.

### Outside

There is an enclosed garden to the rear with a pedestrian gate leading onto the main driveway and then to the parking for The Tallett with space for two vehicles. To the front is a small courtyard garden.

### Services

Mains water and electricity are connected. Private water supply.

### Council Tax Band

C

### Tenure

Freehold

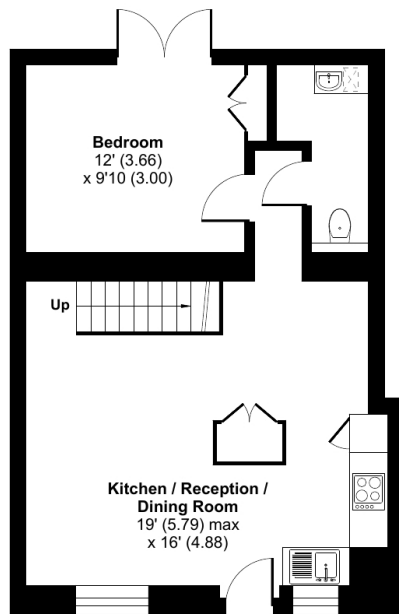




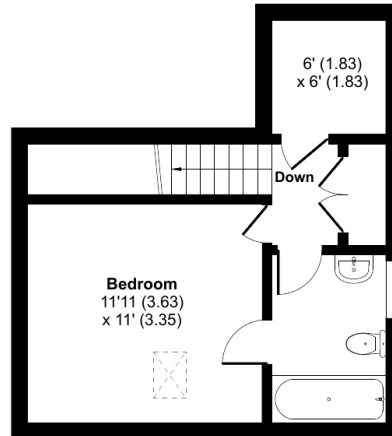
## Dean Street Farm, Dean, Shepton Mallet, BA4

Approximate Area = 816 sq ft / 75.8 sq m

For identification only - Not to scale



GROUND FLOOR



FIRST FLOOR



Floor plan produced in accordance with RICS Property Measurement Standards incorporating International Property Measurement Standards (IPMS2 Residential). © nichecom 2024. Produced for Cooper and Tanner. REF: 1100533

### SHEPTON MALLET OFFICE

Telephone 01749 372200

32, High Street, Shepton Mallet, Somerset BA4 5AS

[sheptonmallet@cooperandtanner.co.uk](mailto:sheptonmallet@cooperandtanner.co.uk)

COOPER  
AND  
TANNER

Important Notice: These particulars are set out as a general outline only for the guidance of intended purchasers and do not constitute, nor constitute part of, an offer or contract. All descriptions, dimensions, reference to condition and necessary permissions for use and occupation, warranties and other details are given without responsibility and any intending purchasers should not rely on the m as statements or representations of fact but must satisfy themselves by inspection or otherwise as to the correctness of each of them.

