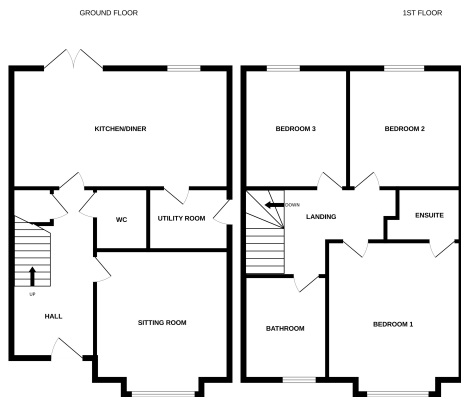




150 The Westbourne, Cobden Avenue, Peterborough, Cambridgeshire £350,000



For illustration purposes only. Dimensions, finishes, fixtures, fittings and landscaping are not representative. Model not for sale. ©2024

*** THE WESTBOURNE - PLOT 2 - THREE BEDROOM DETACHED FAMILY HOME *** A unique development of 9 Spacious Homes located in the heart of the city. A large kitchen and open-plan dining area with bi-fold doors, spacious sitting room & wide entrance hallway are signature features across this development.

COBDEN AVENUE

A unique development of 9 Spacious Homes located in the heart of the city. A large kitchen and open-plan dining area with bi-fold doors, spacious sitting room & wide entrance hallway are signature features across this development.

With underfloor heating as standard and energy efficient Air Source Heat Pumps you can expect to enjoy lower energy bills in your brand new home. The smart heating can be controlled from your phone and with every house being connected to high speed BT fibre broadband you can work smarter from home and enjoy faster streaming for your entertainment.

THE WESTBOURNE

The Westbourne is the first property you see as you arrive at this modern city centre development.

Three Bedrooms, lounge, kitchen / dining room, utility, ground floor cloakroom, bathroom and en-suite shower room complete this modern detached home, with parking and all the mod-cons

AGENTS NOTE

These particulars are for reference only. Government schemes are at the discretion of the third parties and neither Rosedale nor the vendor has any influence. Specifications for individual dwellings vary and you should check final details prior to committing to a purchase. All images including maps and floor plans are for reference only and are not to scale and may not be of the specific plot and are only for marketing purposes.

