



Whitings Court

Paynes Park | HITCHIN | Hertfordshire | SG5 1EJ

www.stonegate-estates.co.uk



WHITINGS COURT

Property Description

We are delighted to offer for sale this spacious and well presented two double bedroom retirement apartment.

Being placed on the ground floor and being one of the original show apartments, there is a light and airy feel throughout. There is a well appointed kitchen along with a refitted shower.

The apartment is ideally placed with easy access to the town centre and the local amenities.

Viewing is via appointment only and is strongly recommended to avoid disappointment.

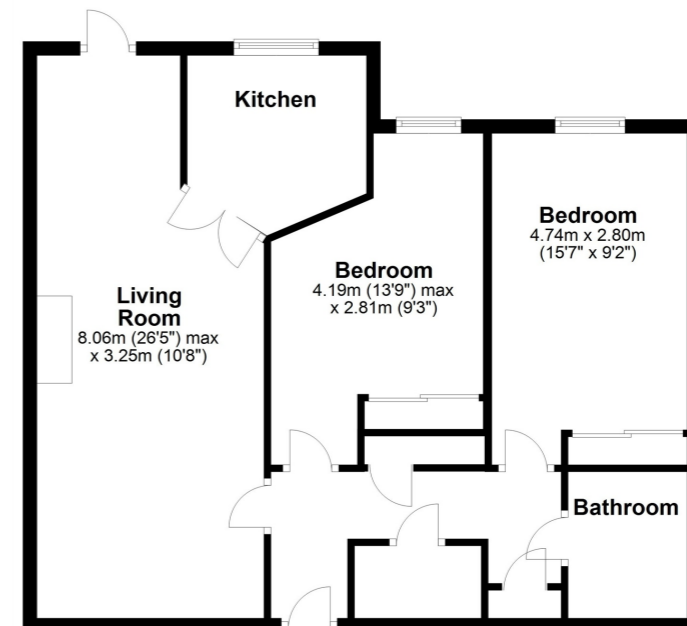
Hitchin town provides a broad range of shops and a regular traditional market, together with a good selection of restaurants, bars and pubs within its historic centre. The town also provides a swimming centre, theatres and a library, whilst the commuter is served by the main line railway station (Kings Cross - 30 minutes) and direct links to the A1(M).

£275,000 Leasehold





Floor Plan
Approx. 70.3 sq. metres (756.6 sq. feet)



Total area: approx. 70.3 sq. metres (756.6 sq. feet)

All measurements shown are approximate and for guidance only. Garages and workshops are not included in any gross floor areas unless integral to the main building where they will be included.
Plan produced using PlanUp.



- Two Bedroom Retirement Apartment
- Town Centre Location
- Ground Floor
- Communal Gardens and Parking
- Residents Lounge
- Laundry Facilities
- Resident House Manager
- No Onward Chain

EPC Rating:

Stonegate Estate Agents

01462 438979

sales@stonegate-estates.co.uk | www.stonegate-estates.co.uk

