



Flat 2, 18-20 Rossiter Court, Abraham Drive, Poole, Dorset. BH15 4FU

- Modern Ground Floor Apartment
- Two Bedrooms
- En-Suite and Bathroom
- Open Plan Kitchen/Living/Dining Area
- Close to Hamworthy Park and Beach
- No Forward Chain



PROPERTY DESCRIPTION

Mursells Estate Agents are pleased to offer for sale this delightful 2 bedroom ground floor apartment located a short stroll from Hamworthy Park and beach. Built in 2018 by a renowned national house builder, this spacious apartment is in excellent order throughout and is offered for sale with No Forward Chain.

The property features a stylish open plan kitchen/living/dining room. The kitchen area is fitted with a range of wall and base units providing ample storage and there is an integrated oven with gas hob and extractor above.

Comprising two bedrooms, the master bedroom enjoys the luxury of an ensuite bathroom complete with a large walk in shower, w.c. and wash hand basin. The bathroom is fitted with bath having shower over, wc. and wash hand basin.

Outside there is a garage, ideal for additional storage, and a secure shared bike shed.

With over 990 years remaining on the lease and offered as an end of chain sale, an exceptional opportunity awaits discerning buyers who appreciate modern living close to the sea.

Book your appointment to view internally by contacting Mursells Estate Agents today.

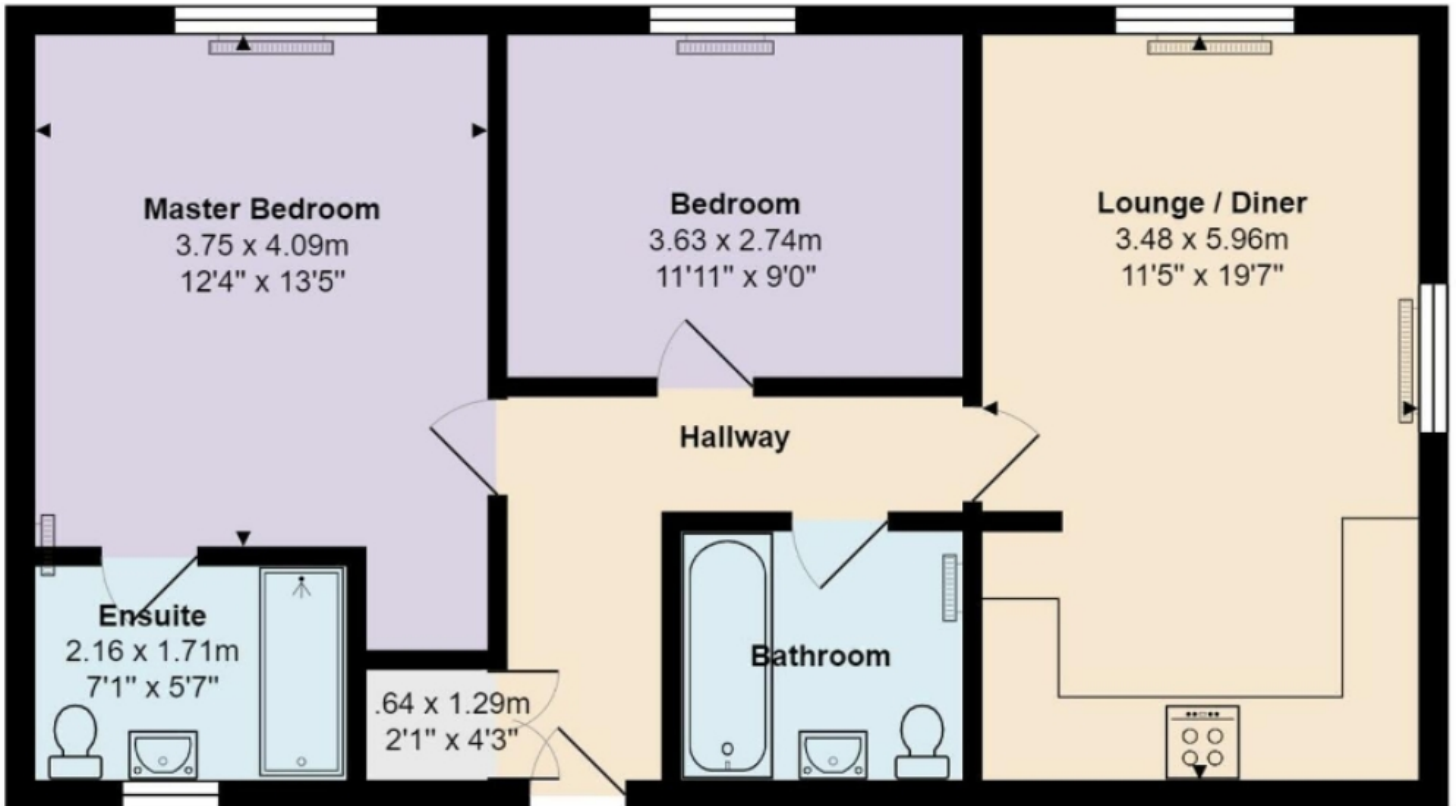


ROOM DESCRIPTIONS



FLOORPLAN

Mursells



Total Area: 65.6 m² ... 706 ft²

All measurements are approximate and for display purposes only

Mursells

ESTATE AGENTS

Mursells Estate Agents
8a, High Street, Lychett Matravers, BH16 6BQ
01202 018811
info@mursells.co.uk