

66 Olive Road, Dartford, Kent, DA1 2QU
£450,000 Freehold

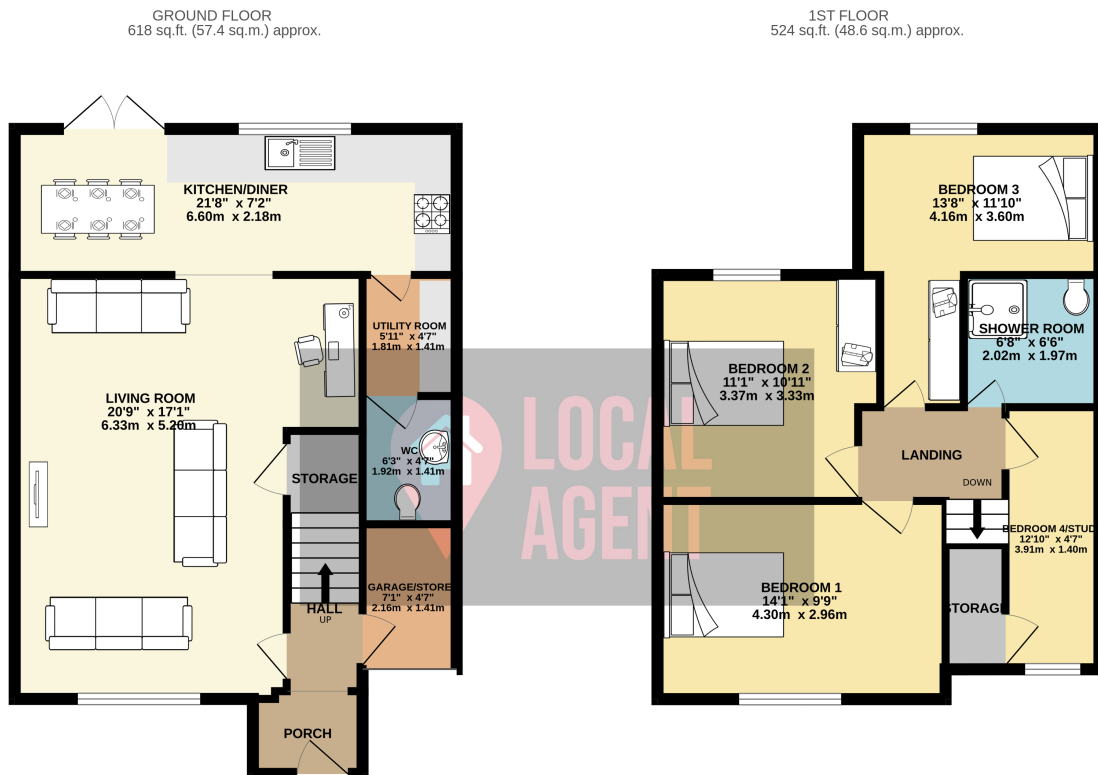
Description

Guide Price £450,000 - £475,000

Set back behind the Tree Line, you will find this recently refurbished property with newly fitted kitchen, brand new carpets, freshly decorated throughout. The spacious living space is ideal for a large family. There are four bedrooms and shower room upstairs. The driveway offers ample parking with an integral garage ideal for storage.

Use our online diary to request your viewing!

Located on the Tree Estate Development, Local schools are considered to be one of the best in the borough and within walking distance the popular Oakfield Primary Academy and Wilmington Primary both boasting of a Good Ofsted ratings. Wilmington Grammar Schools and Wilmington Academy are just a short walkaway. For Commuters, easy access to the M25, M20 and the A20 being on the M25 interchange. The A2 is also north of the property with easy access to London or Coastal routes. Dartford railway station with is a short drive away serves the town with Southeastern and Thameslink services. Dartford Town Centre offers a variety of shops, cafes pubs and restaurants. Dartford Golf Club with health and fitness facilities is just short distance away. Dartford is also round the corner with excellent pathways for dog walkers or cyclist to enjoy.



TOTAL FLOOR AREA: 1141 sq.ft. (106.0 sq.m.) approx.

Whilst every attempt has been made to ensure the accuracy of the floorplan contained here, measurements of doors, windows, rooms and any other items are approximate and no responsibility is taken for any error.