



GREGORY BROWN
RESIDENTIAL SALES & LETTINGS

OIEO £600,000 Freehold
FOR SALE



Wraysbury Gardens, Staines-upon-Thames, Surrey, TW18 4US

VERY WELL PRESENTED & SPACIOUS TOWNHOUSE SITUATED IN THIS MODERN POPULAR DEVELOPMENT IDEALLY LOCATED WITHIN MOMENTS OF TWO RIVERS SHOPPING CENTRE IDEALLY LOCATED FOR EASY ACCESS TO LOCAL MOTORWAY NETWORKS & HEATHROW AIRPORT. The property benefits from a modern kitchen/breakfast room, spacious lounge with balcony, downstairs W.C/shower room, four well-proportioned bedrooms with en-suite to Beds 1 & 2, study, well-maintained rear garden, off-street parking and garage. Viewings Highly Recommended!

Gregory Brown

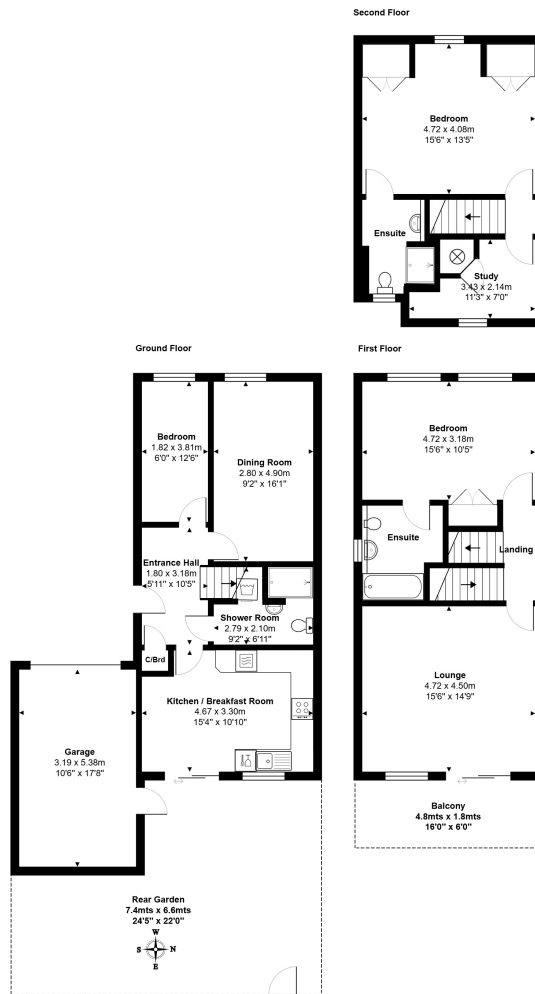
127a, High Street, Staines-upon-Thames, TW18 4PD

01784 451458

staines@gregory-brown.co.uk

ROOM DESCRIPTIONS

FLOORPLAN



Total Area: 151.6 m² ... 1632 ft²

All measurements are approximate and for display purposes only.

127a, High Street, Staines-upon-Thames, TW18 4PD

01784 451458

staines@gregory-brown.co.uk