



Beachway Derbyhaven, Derbyhaven, Isle of Man. IM9 1TS

Impressive coastal home set over three floors with balcony in one of the islands most desirable locations



£745,000 Freehold

PROPERTY DESCRIPTION

Beachway in Derbyhaven stands as an impressive coastal home, spanning three floors and positioned in one of the Isle of Man's most desirable locations. This residence offers a luxurious and spacious living experience with five well-appointed bedrooms, including a master bedroom with an en-suite bathroom. The thoughtful design extends to include a dedicated home office, providing a convenient space for work or study, and an additional snug room for cozy relaxation. The property also features a utility room, catering to practical needs with modern conveniences.

With front and rear gardens, residents of Beachway can enjoy outdoor spaces for various activities, and a garage adds to the convenience of secure parking and extra storage. The standout feature of this coastal home is the balcony that provides fantastic views, allowing residents to soak in the beauty of the surrounding coastal landscape. Beachway combines sophisticated design, practical amenities, and breathtaking views, making it a desirable residence for those seeking a premium coastal living experience in Derbyhaven.

INCLUSIONS Fitted carpets.

FEATURES

- Stunning Coastal Property within Derbyhaven
- Highly Desirable Location with Direct Beach Access
- Close to Airport and King Williams College
- Lounge, Dining Room plus Snug, Kitchen and Utility
- 5 Double Bedrooms (1 En Suite) Plus Bathroom & Shower Room
- Home Office plus Garage
- Front and Rear Gardens
- Land Potentially Available by Separate Negotiation

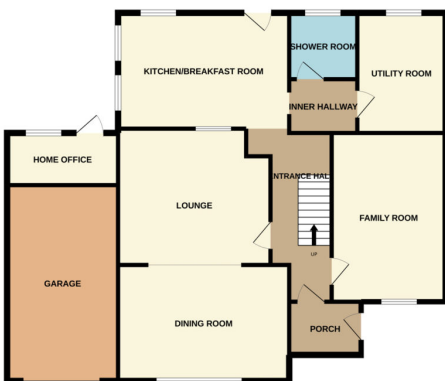


Property Images



FLOORPLAN

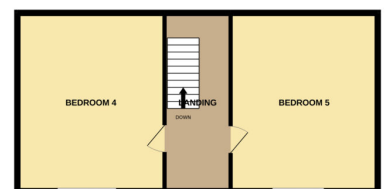
GROUND FLOOR



1ST FLOOR



2ND FLOOR



Whilst every attempt has been made to ensure the accuracy of the floorplan contained here, measurements of doors, windows, rooms and any other items are approximate and no responsibility is taken for any error, omission or mis-statement. This plan is for illustrative purposes only and should be used as such by any prospective purchaser. The services, systems and appliances shown have not been tested and no guarantee as to their operability or efficiency can be given.
Made with Metropix ©2022

DISCLAIMER: Whilst Manxmove Ltd believe that these details are correct, neither Manxmove Ltd or their clients guarantee their accuracy in any way. Consequently, these details are not to be used to form part of any legally binding contract. Prospective purchasers or tenants are advised to visit this property to satisfy themselves as to the correctness of these details. Please note, we use wide angle camera lenses in order to show as much of each room as possible. This is not intended to mislead any prospective purchasers or tenants in any way and an honest verbal description is always available prior to viewing if required.