

BARTESTREE

£359,950

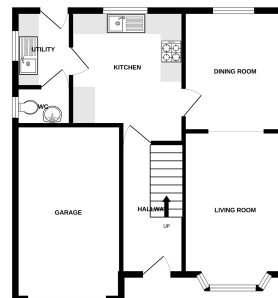


Key Features

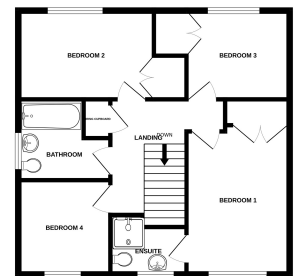
- ✓ Larger than average south facing garden
- ✓ Four double bedroom detached property
- ✓ utility room and cloakroom
- ✓ En-suite shower room



GROUND FLOOR
617 sq. ft. (57.3 sq.m.) approx.



1ST FLOOR
589 sq. ft. (54.7 sq.m.) approx.



TOTAL FLOOR AREA: 1206 sq. ft. (112.0 sq.m.) approx.
*Based on Mervyns (2022)