

# FOR SALE

Leysfield Road,  
Shepherd's Bush, W12

Flat  
Askew Village

£635,000 sh of fh

1  1  2 



**horton  
andgarton**

SALES / LETTINGS / PROPERTY MANAGEMENT

hortonandgarton.co.uk | Sales 020 8819 0510 | Lettings 020 8819 0511  
172 King Street, Hammersmith, W6 0QU



# FOR SALE

Leysfield Road,  
Shepherd's Bush, W12

Flat  
Askew Village

£635,000 sh of fh

1  1  2 



**horton  
andgarton**

SALES / LETTINGS / PROPERTY MANAGEMENT

hortonandgarton.co.uk | Sales 020 8819 0510 | Lettings 020 8819 0511  
172 King Street, Hammersmith, W6 0QU



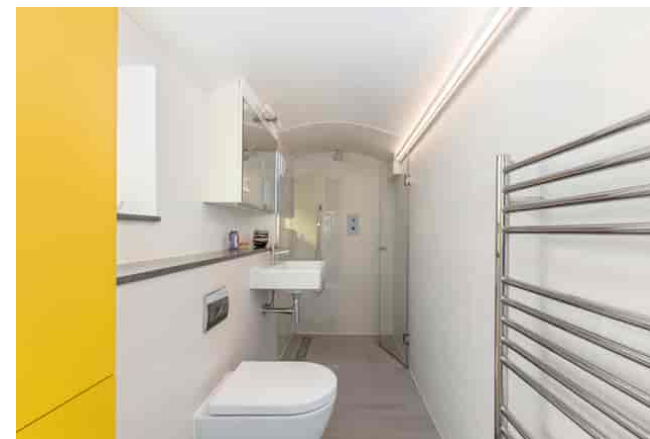
# FOR SALE

Leysfield Road,  
Shepherd's Bush, W12

Flat  
Askew Village

£635,000 sh of fh

1  1  2 



**horton  
andgarton**

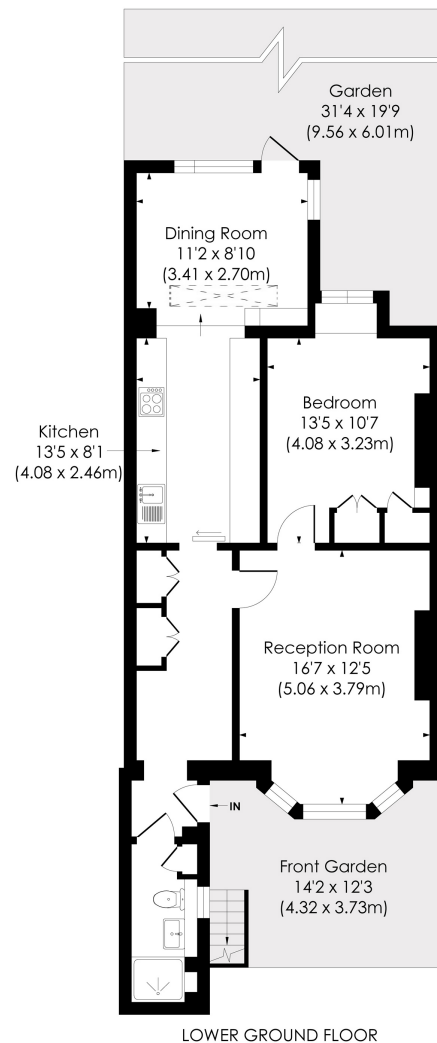
SALES / LETTINGS / PROPERTY MANAGEMENT

[hortonandgarton.co.uk](https://hortonandgarton.co.uk) | Sales 020 8819 0510 | Lettings 020 8819 0511

172 King Street, Hammersmith, W6 0QU







**LEYSFIELD ROAD, W12**

Approx. Gross Internal Floor Area  
**741 Sq'/68.84 SqM**

**horton  
and garton**

© Pixangle Property Marketing Ltd. info@pixangle.com Tel: 0208 870 2118

This floor plan has been prepared for the purpose of illustration only in accordance with the latest RICS code of measuring practice and is not to scale. All measurements and areas are approximate and whilst every effort has been made to ensure the accuracy of the plan contained here, no responsibility is taken for any error, omission or misstatement.



Victorian garden flat | One bedroom - One bathroom |  
741 Sq' - 68.84 SqM | Private mature garden | EPC  
rating C | Askew Village



[hortonandgarton.co.uk](http://hortonandgarton.co.uk)

Sales 020 8819 0510

Lettings 020 8819 0511

172 King Street, Hammersmith, W6 0QU