



82 Long Lane, Staines-upon-Thames, Surrey, TW19 7AE

SPACIOUS THREE BEDROOM TERRACED PROPERTY IDEALLY LOCATED FOR BOTH ASHFORD & STAINES TOWN CENTRES, LOCAL MOTORWAY NETWORKS & HEATHROW AIRPORT. The property benefits from a spacious lounge/diner, separated fitted kitchen with lean-to, ground floor bathroom, three well-proportioned bedrooms and secluded rear garden. No Onward Chain. Viewings Highly Recommended!

ROOM DESCRIPTIONS

Covered Porch

With partly glazed door leading to:

Entrance Hall

Light point, radiator, stairs to first floor.

Lounge

Front aspect UPVC double glazed window, light and power points, radiator, wood-style laminate flooring, cast-iron fireplace.



Kitchen



Range of fitted units at eye and base level, sink drainer unit, built-in oven and hob with extractor over, space for washing machine, dishwasher & fridge/freezer. Radiator, wall mounted boiler, inner lobby with understairs storage cupboard.

Lean too

Rear and side aspect double glazed windows, French doors to Garden.

Bathroom

Rear aspect UPVC double glazed window, panel enclosed bath, low level W.C, pedestal wash hand basin, heated towel rail, partly tiled walls, downlighters.



First Floor

Landing

Light point, access to loft space.

Bedroom 1

Front aspect UPVC double glazed window, light and power points, radiator.



Bedroom 2

Rear aspect UPVC double glazed window, light and power points, radiator.



ROOM DESCRIPTIONS

Bedroom 3

Rear aspect UPVC double glazed window, light and power points, radiator.

Outside

Front Garden

Mainly laid to lawn, pathway to front door.

Rear Garden

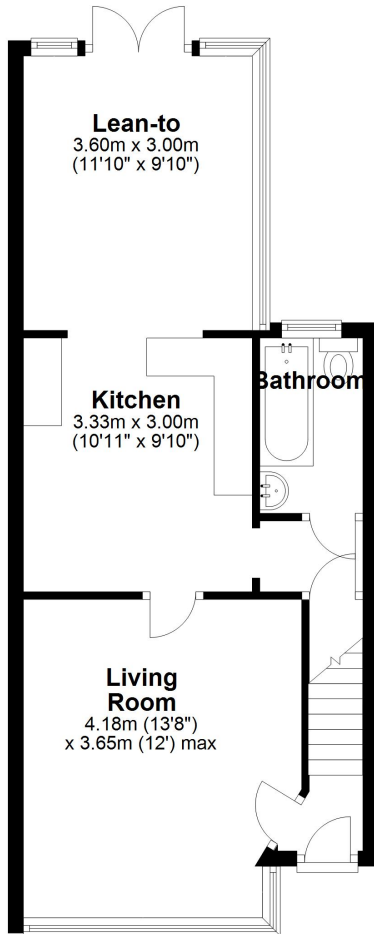
Block paved patio nearest to house, mainly laid to lawn, enclosed by wood-panel fencing.



FLOORPLAN

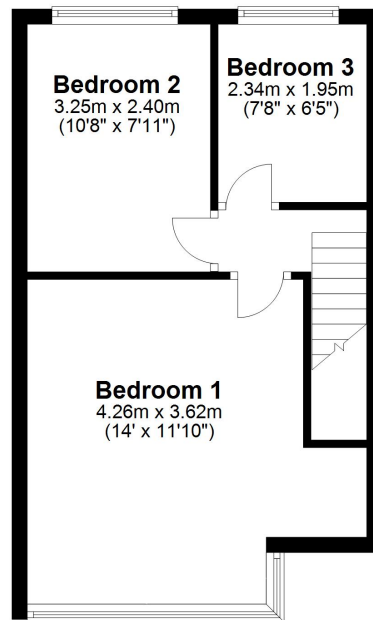
Ground Floor

Approx. 43.8 sq. metres (471.4 sq. feet)



First Floor

Approx. 32.7 sq. metres (351.9 sq. feet)



Total area: approx. 76.5 sq. metres (823.3 sq. feet)