



- Two Bedroom Apartment
- 850SQFT Of Accommodation
- Large Kitchen/Living/Dining Room
- Short Walk To Town & Station
- Top Floor
- Gas Central Heating & UPVC Windows
- 40% Share (Shared Ownership)
- Monthly Rent For Remaining 60% - £409.05
- Monthly Service Charge - £36.24
- Partially Boarded Loft With Electric & Communal Bike Store

76 Porters Field, Braintree, Essex. CM7 1FE.

Michaels Property Consultants are delighted to offer this excellent opportunity to acquire a 40% share of this well presented and deceptively spacious, two bedroom top floor apartment, boasting excellent sized accommodation of circa 850sqft. New to the market and offered for sale with no onward chain, this stylish apartment lends itself perfectly to first time buyers with a limited deposit wanting to get themselves onto the property ladder, with the option to staircase the 60% remaining share in the future.



Property Details.

Accommodation

Entrance Hall

Kitchen/Dining Area



26' 6" x 11' 4" MAX (8.08m x 3.45m)

Living Area



17' 5" x 11' 3" (5.31m x 3.43m)

Bathroom



Property Details.

Bedroom One



11' 1" x 11' 1" (3.38m x 3.38m)

Bedroom Two



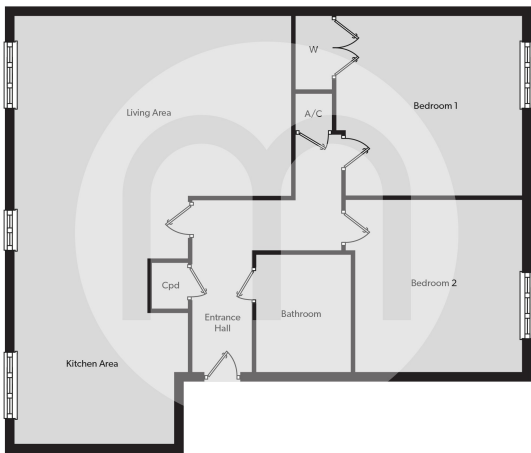
10' 9" x 10' 4" (3.28m x 3.15m)

Outside

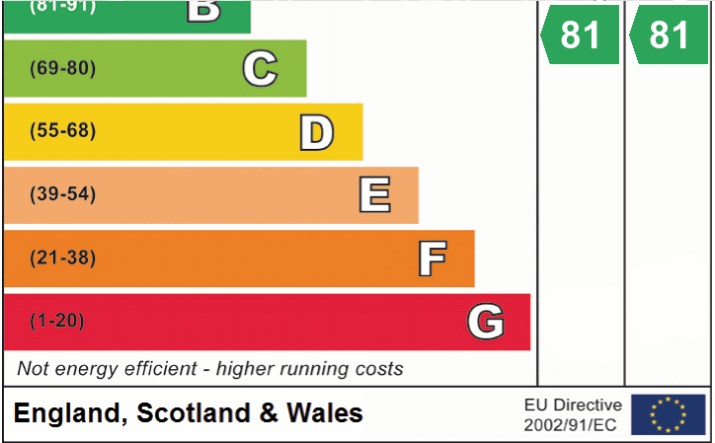
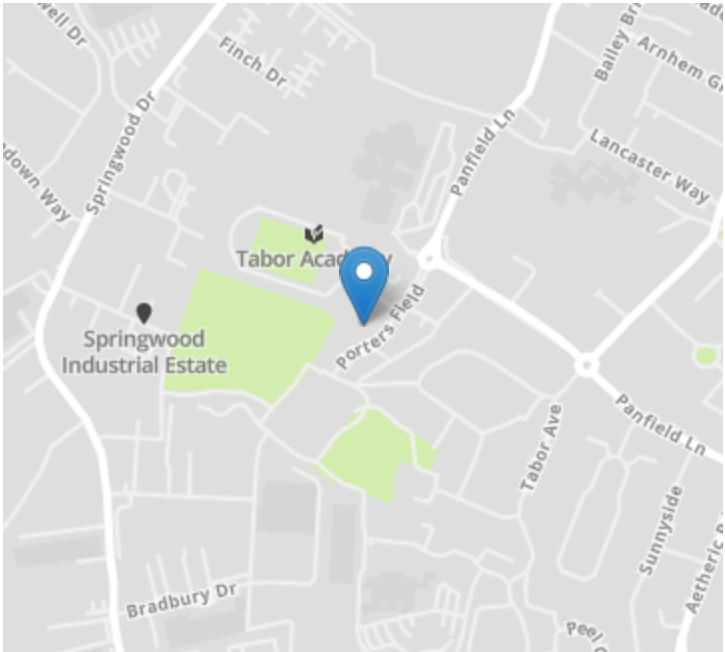
Allocated Parking Space

Property Details.

Floorplans



Location



We have not carried out a structural survey and the services, appliances and specific fittings have not been tested. All photographs, measurements, floor plans and distances referred to are given as a guide only and should not be relied upon for the purchase of carpets or any other fixtures or fittings. Gardens, roof terraces, balconies and communal gardens as well as tenure and lease details cannot have their accuracy guaranteed for intending purchasers. Lease details, service ground rent (where applicable) are given as a guide only and should be checked and confirmed by your solicitor prior to exchange of contracts.